



# Common Principles and Technical Requirements for Pan-European River Information Services (RIS)

Joint Presentation of  
the Republic of Croatia and the Republic of Serbia



---

Geneva, October 2008

Inland Waterways of the Region

Legal Background

RIS on the Danube River in Croatia

RIS on the Danube River in Serbia

RIS on the Sava River

APATIN – Joint Critical Section of the Danube River

Challenges for the Future



# Inland Waterways of the Region



# Inland Waterways of the Region

## The Danube River



Republic of Croatia



Republic of Serbia

# Inland Waterways of the Region

Length of the joint sector of the Danube River is 137.5 km



Republic of Croatia



Republic of Serbia

There is no bilateral agreement  
Between Croatia and Serbia,  
as a platform for technical actions

Border line between Croatia and Serbia  
is not defined

Never the less, countries are trying to  
cooperate in various ways



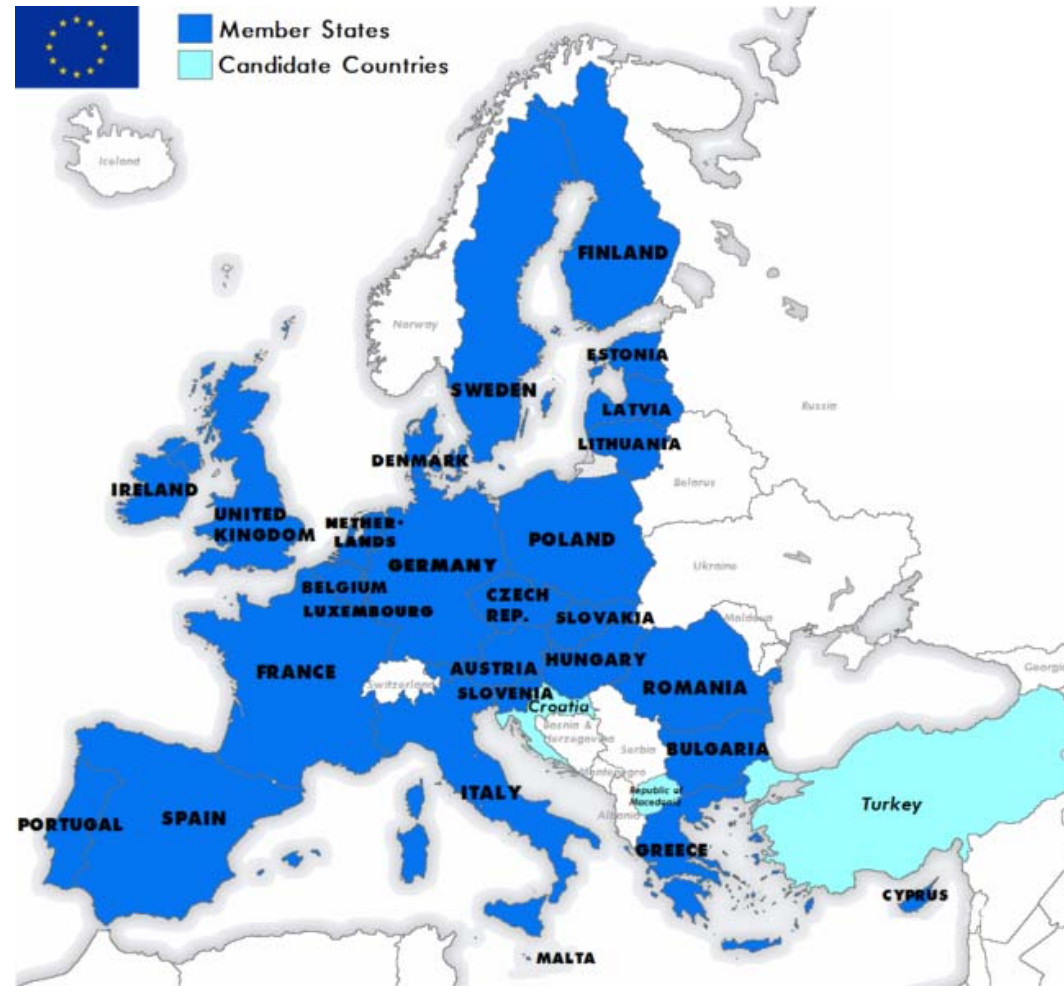


# Legal Background

- Croatia - candidate for EU membership
- Serbia - Stabilization and Association Agreement (SAA) signed in 2008, candidacy expected in 2009

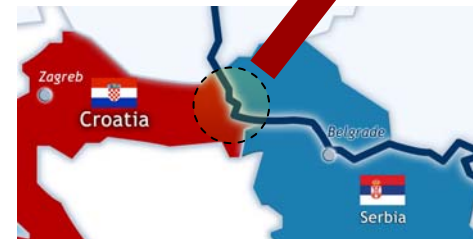
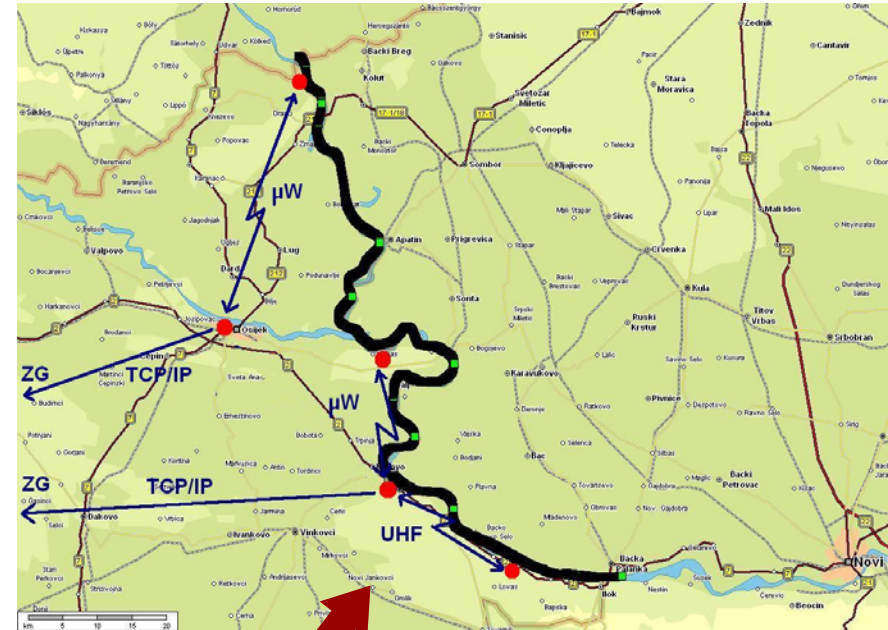
## EU legislation refer to RIS

- Regulations
  - EC 414/2007
  - EC 415/2007
  - EC 416/2007
- Directive 2005/44/EC



## Status quo

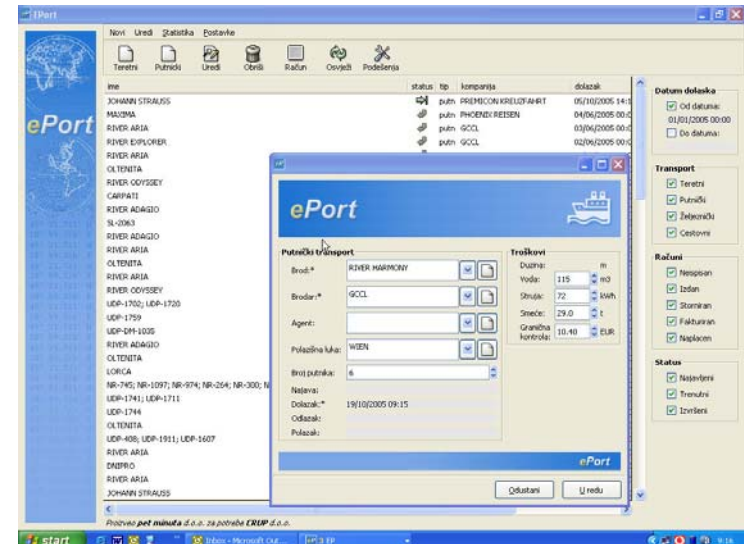
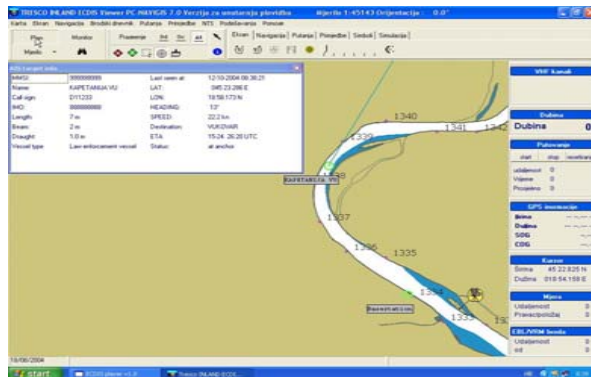
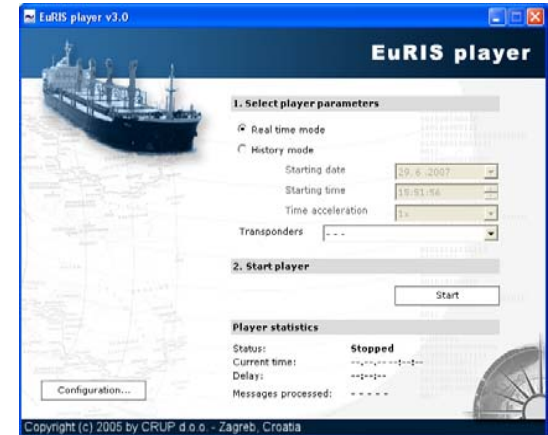
- 100% of Croatian part of Danube and commercial part of Drava covered with AIS signal
- RIS Centre Vukovar opened in January 2006
- ENC's produced for the Danube, Drava & Sava Rivers
- Full coverage of voice VHF radio
- CB-RIS Crossborder implementation Joint project HU-CRO
- Organizational/Legal framework established





## Application & services

- TTI – CRORIS Player / CRORIS Viewer
- ENC – Electronic Navigational Charts
- NTS, waterlevel
- E-port (port management)
- ERI – beta phase of development



CRORIS portal: [www.crup.hr](http://www.crup.hr)

- Publication of Notice to Skippers – NTS
- Download of Croatian Danube and Drava ENC's
- Water levels of Danube, Drava and Sava with hourly update
- Other information relevant for Inland Navigation



# RIS on the Danube River in Serbia

ENCs for the Danube and Tisza Rivers are developed, and for the Sava River are under preparation

ENCs can be downloaded for free at [www.plovput.rs](http://www.plovput.rs)



Notices to skippers (NTS) **Plovput** English | Srpski

RIS messages system is currently in test phase. All suggestions and complaints can be sent to e-mail: [ris@plovput.co.rs](mailto:ris@plovput.co.rs)

SEARCH MESSAGES

Language:

River:

Period of validity from:

to:

From issue date:

Message Type:

- Fairway and traffic
- Water-related message
- Ice message

September, 2007

wk	Mon	Tue	Wed	Thu	Fri	Sat	Sun
35	27	28	29	30	31	1	2
36	3	4	5	6	7	8	9
37	10	11	12	13	14	15	16
38	17	18	19	20	21	22	23
39	24	25	26	27	28	29	30
40	1	2	3	4	5	6	7

Select date

Home

e-mail service

PlovPut

ITS-Adminitration

Username:

Password:

Enter

e-mail service

You can receive all notifications by e-mail, click this link "e-mail service", fill in your informations and notifications will be delivered to your e-mail address.

Notices to Skippers available in Serbia since 2007

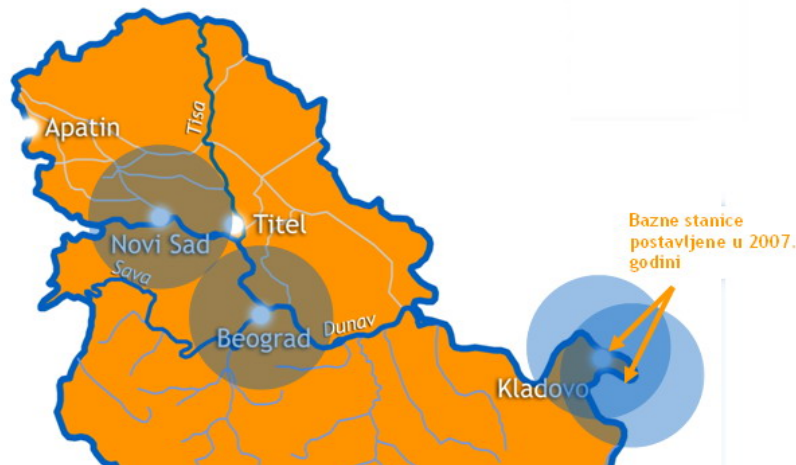


# RIS on the Danube River in Serbia

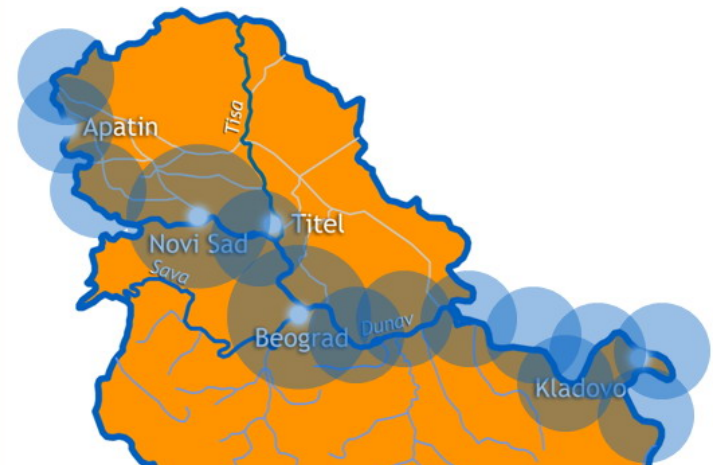
With 4 installed basestations, 200 km of the Danube River in Serbia (out of 588 km) is covered with AIS signal

Full rollout of the RIS on the Danube River in Serbia in the next three years is envisioned

2008



2011





# RIS on the Danube River in Serbia

RIS Center in Serbia opened in January 2008



Navigation tracking and tracing in real time is being performed



Republic of Croatia



Republic of Serbia



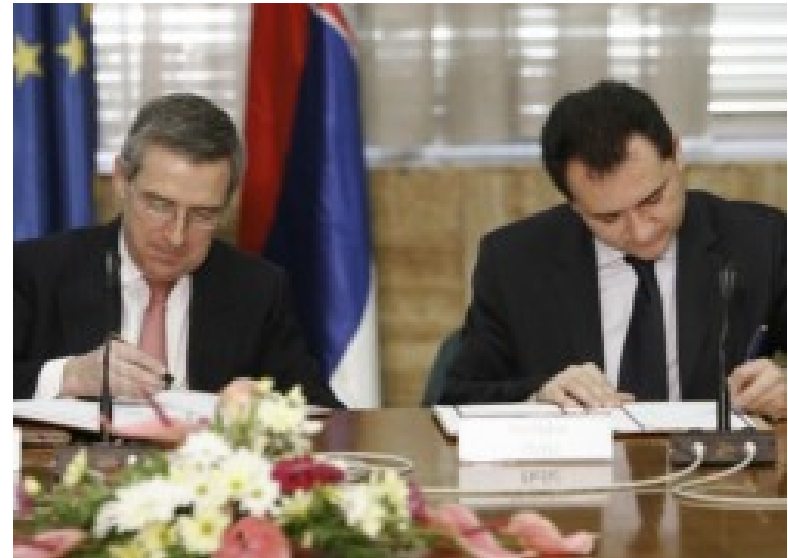
# RIS on the Danube River in Serbia

EU has recognized results of Serbia and supported them



Financial agreement between EU and Serbia signed in April 2008

Full Scale Implementation of RIS in Serbia, worth 11 Million Euro, among prioritized projects



# RIS on the Sava River



Republic of Croatia

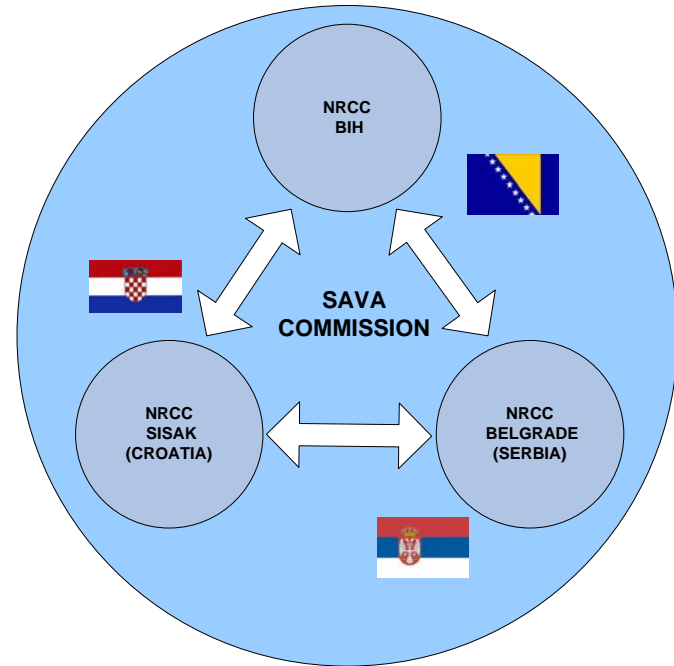
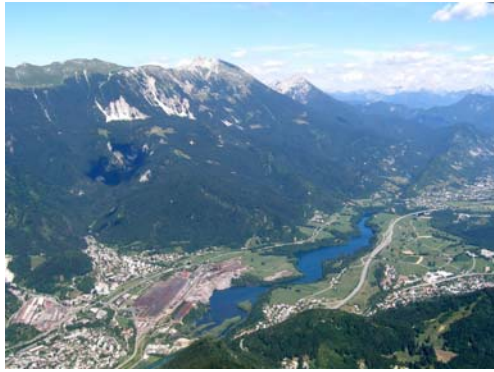


Republic of Serbia

# RIS on the Sava River

The Sava River has a status of international waterway since 2002

RIS on the Sava River – Cooperation Model



ToR for RIS Development on the Sava River is prepared, start of project implementation expected in 2009



# APATIN Section



Republic of Croatia

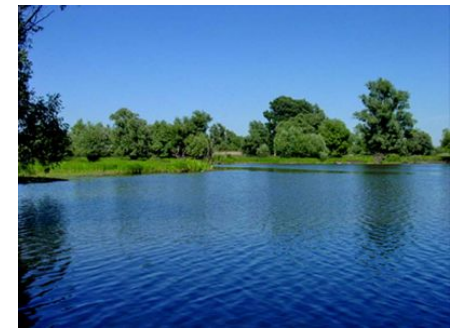


Republic of Serbia



# APATIN Section

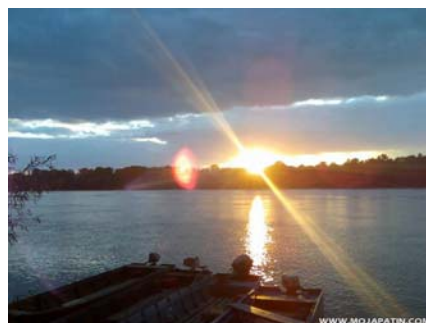
On the Croatian side of this part of the Danube River, there is a nature park Kopacki Rit, a unique reserve of plants and birds





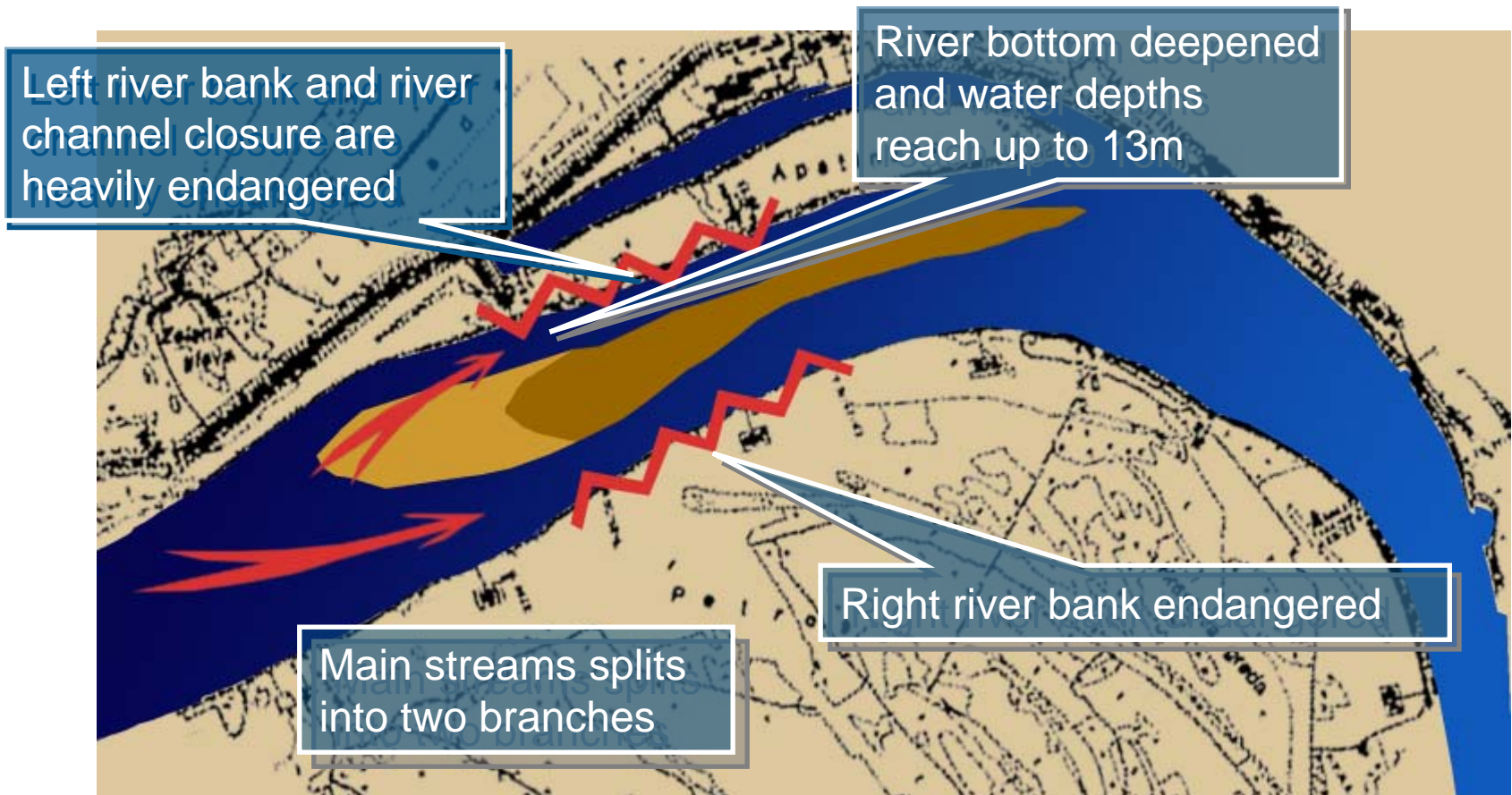
# APATIN Section

On the Serbian side of this part of the Danube River, there is a town of Apatin, with it's shipyard, port and marine



# APATIN Section

Apatin section is one of the most critical sections for navigation  
It creates problems for both sides, Croatian and Serbian





**Solution:**  
**Large scale river training works with  
joined forces from both countries**

Croatia and Serbia are prepared to organize a workshop and a visit of foreign guests to this location



# Challenges for the Future

Overcoming  
the obstacles in bilateral relationships

Improving  
cross-border cooperation in the region

Applying  
European standards in IWT

Promoting  
inland waterway transportation







**Thank You  
for Your Attention**

**Joint Presentation of  
the Republic of Croatia and the Republic of Serbia**



---

Geneva, October 2008