



United Nations Economic Commission for Europe  
Transport Division

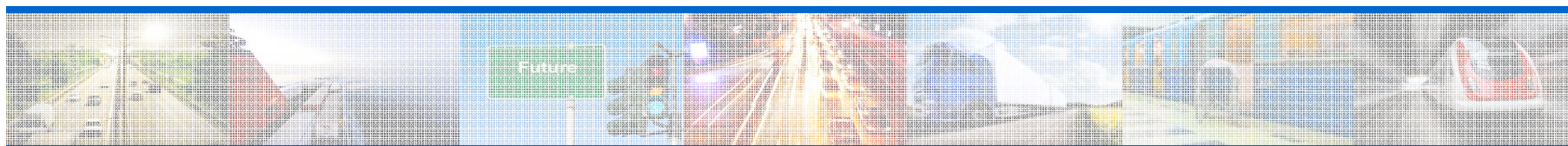
Informal document WP.6 No. 5-Rev.1 (2011)  
(62<sup>nd</sup> WP.6, 6-8 July 2011,  
Agenda item 2.)

**UNDA project on CO<sub>2</sub> emissions in  
inland transport**

**For Future Inland Transport Systems (ForFITS)**

Romain Hubert, project manager

Working Party on Transport Statistics (62<sup>nd</sup> session)





# 1. The project

- 3 year project funded by UNDA
- 5 Regional Commissions involved
- Launched January 2011
- Develop tool for the assessment of CO2 emissions
- Freely available
- Raise global awareness for actions and measures needed for climate change mitigation and adaptation
- Assist governments establishing transport policy and mitigation strategies
- Promote the tool to pave the way for the future inland transport system (ForFITS)





### **Objective:**

To develop an information and analysis tool based on a uniform methodology for the evaluation of CO<sub>2</sub> emissions in the transport sector in order to enable all UN countries to optimize the use of energy sources in the transport sector, taking into consideration: road vehicle fleets, types of propulsion systems, transport infrastructure, sustainable energy sources, intermodal transport on railways & inland waterways and appropriate policy measures.

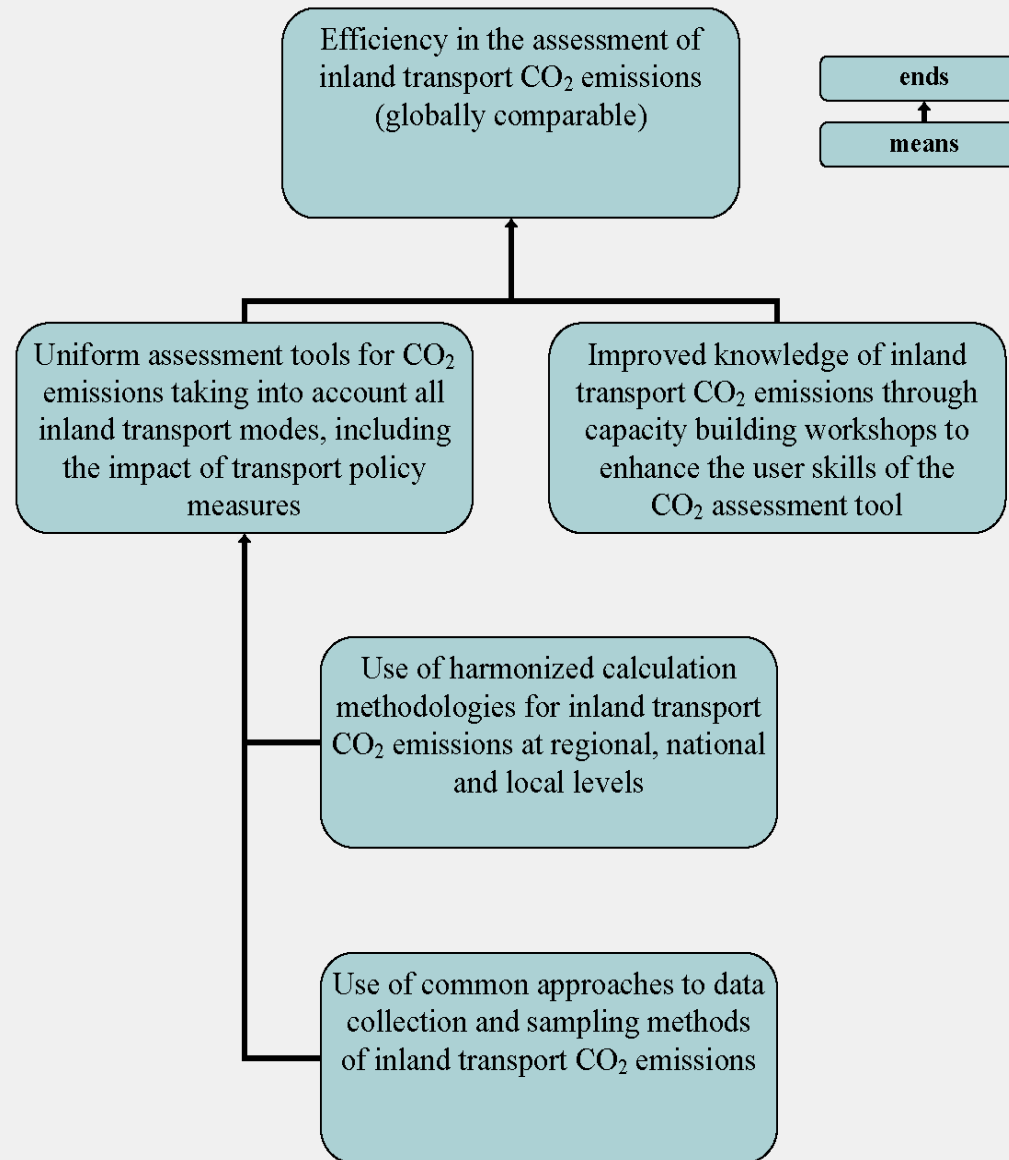
### **Expected Achievement:**

Capacity building workshops in all UN RCs on inland transport CO<sub>2</sub> emissions and on how to use the powerful analysis tool in order to develop their future strategies for inland transport and to support their policy decisions.





## Objective tree:





### 1 Step (2011):

- Preparation and distribution of the questionnaire on inland transport CO<sub>2</sub>
- Evaluation of the replies to the questionnaire
- Drafting the global status report
- Review of existing emission assessment methodologies
- Drafting a recommendation on existing emission assessment methodologies
  
- Organization of an international emissions expert meeting (October 2011)
- Drafting the meeting report and selection of the most appropriate model(s)



- **2 Step (2012):**
  - - Development of the tool ForFITS
  - - Implementation, verification and validation of ForFITS
  - - Preparation of a user manual for the application of ForFITS
- **3 Step (2013):**
  - - Piloting out ForFITS and its application
  - - Organization of capacity building workshops in all UN RCs
  - - Project evaluation



## 2. Where we are

- Release of funds
- New website and Flyer
- Questionnaire on inland transport CO<sub>2</sub> emissions
- Official letter to UN Regional Commissions, ITC delegates, Foreign ministers
- Preparing international expert meeting
- Global status report 2<sup>nd</sup> half of the year





### 3. What we need

- Nomination of national focal points on inland transport CO<sub>2</sub> emissions
- Respond to the Questionnaire on CO<sub>2</sub> emissions available at: [http://live.unece.org/trans/theme\\_forfits.html](http://live.unece.org/trans/theme_forfits.html)
- Participate in the international expert meeting (October 2011)





## 4. What we expect from WP.6

For the assessment of CO<sub>2</sub> emissions with the future tool ForFITS to support:

- the breakdown of the common questionnaire to receive appropriate data on each inland transport mode
- the review of the illustrated glossary for transport statistics to insert a harmonized terminology



Thank you for your attention



[http://live.unece.org/trans/theme\\_forfits.html](http://live.unece.org/trans/theme_forfits.html)



| ID | Task Name   | Who  | Start        | Finish       | 2011   |   |   |   |   |   |   |   |   |   |   |   | 2012 |   |   |   |   |   |   |   |   |   |   |   | 2013 |   |   |   |   |   |   |   |   |   |   |   |
|----|---|--|--------------|--------------|--|---|---|---|---|---|---|---|---|---|---|---|------|---|---|---|---|---|---|---|---|---|---|---|------|---|---|---|---|---|---|---|---|---|---|---|
|    |   |  |              |              | D  | J | F | M | A | M | J | J | A | S | O | N | D    | D | J | F | M | A | M | J | J | A | S | O | N    | D | D | J | F | M | A | M | J | J | A | S |
| 1  | <b>Development and implementation of a monitoring and assessment tool for CO2 emissions in inland transport including transport policy converter (FoFITS)</b>   | Consultant 1, Consultant 2, Consultant 3, Regional Commissions, GTA, stakeholders and external evaluator | Mon 10.01.11 | Tue 31.12.13 | [Gantt bar spanning from Jan 2011 to Dec 2013] |   |   |   |   |   |   |   |   |   |   |   |      |   |   |   |   |   |   |   |   |   |   |   |      |   |   |   |   |   |   |   |   |   |   |   |
| 2  | <b>EA1-Increased awareness of the cause-effect relationship between the different transport modes, energy and CO2 emissions based on internationally comparable information on inland transport CO2 emissions</b>                                       | Consultant 1, Consultant 2, Consultant 3, Regional Commissions, GTA and stakeholders                     | Mon 10.01.11 | Fri 15.06.12 | [Gantt bar spanning from Jan 2011 to Jun 2012] |   |   |   |   |   |   |   |   |   |   |   |      |   |   |   |   |   |   |   |   |   |   |   |      |   |   |   |   |   |   |   |   |   |   |   |
| 3  | <b>(1.0) Launching of the UNDA project on Inland Transport CO2 emissions</b>  |  | Mon 10.01.11 | Fri 18.03.11 | [Gantt bar spanning from Jan 2011 to Mar 2011] |   |   |   |   |   |   |   |   |   |   |   |      |   |   |   |   |   |   |   |   |   |   |   |      |   |   |   |   |   |   |   |   |   |   |   |
| 4  | First contact with all Regional Commissions in order to make them aware of the project and to invite them to cooperate with it (video-conferences, information email/letter...)   | Regional Commissions   | Mon 10.01.11 | Fri 28.01.11 | [Task bar spanning from Jan 2011 to Jan 2011]  |   |   |   |   |   |   |   |   |   |   |   |      |   |   |   |   |   |   |   |   |   |   |   |      |   |   |   |   |   |   |   |   |   |   |   |
| 5  | Review of the Terms of Reference for UNECE and other Regional Commissions as well as for the consultants and GTA  | UNECE  | Mon 17.01.11 | Fri 11.02.11 | [Task bar spanning from Jan 2011 to Feb 2011]  |   |   |   |   |   |   |   |   |   |   |   |      |   |   |   |   |   |   |   |   |   |   |   |      |   |   |   |   |   |   |   |   |   |   |   |
| 6  | Administrative procedures (Preparation of the vacancy announcement for GTA and Consultant 1, engagement of both...)   | UNECE  | Mon 14.02.11 | Fri 18.03.11 | [Task bar spanning from Feb 2011 to Mar 2011]  |   |   |   |   |   |   |   |   |   |   |   |      |   |   |   |   |   |   |   |   |   |   |   |      |   |   |   |   |   |   |   |   |   |   |   |
| 7  | Draft questionnaire (to be revised on a further stage)  | UNECE  | Mon 24.01.11 | Fri 18.03.11 | [Task bar spanning from Jan 2011 to Mar 2011]  |   |   |   |   |   |   |   |   |   |   |   |      |   |   |   |   |   |   |   |   |   |   |   |      |   |   |   |   |   |   |   |   |   |   |   |
| 8  | List of existing models and its specifications (to be completed on a further stage)   | UNECE  | Mon 24.01.11 | Fri 18.03.11 | [Task bar spanning from Jan 2011 to Mar 2011]  |   |   |   |   |   |   |   |   |   |   |   |      |   |   |   |   |   |   |   |   |   |   |   |      |   |   |   |   |   |   |   |   |   |   |   |
| 9  | Creation of the new website regarding the UNDA project  | UNECE  | Mon 17.01.11 | Fri 18.02.11 | [Task bar spanning from Jan 2011 to Feb 2011]  |   |   |   |   |   |   |   |   |   |   |   |      |   |   |   |   |   |   |   |   |   |   |   |      |   |   |   |   |   |   |   |   |   |   |   |
| 10 | Collection, structuration and classification of the information (subdirectory with all relevant files on the G disk, library, database with contact list...)  | UNECE  | Mon 24.01.11 | Fri 18.03.11 | [Task bar spanning from Jan 2011 to Mar 2011]  |   |   |   |   |   |   |   |   |   |   |   |      |   |   |   |   |   |   |   |   |   |   |   |      |   |   |   |   |   |   |   |   |   |   |   |
| 11 | <b>(1.1) Preparation of a global status report based on the regional surveys on inland transport CO2 emissions - surveys to be carried out by the Regional Commissions</b>  | Regional Commissions, GTA and Consultant 1   | Mon 21.03.11 | Fri 03.06.11 | [Gantt bar spanning from Mar 2011 to Jun 2011] |   |   |   |   |   |   |   |   |   |   |   |      |   |   |   |   |   |   |   |   |   |   |   |      |   |   |   |   |   |   |   |   |   |   |   |
| 12 | Revision of the draft questionnaire and preparation of its final version (see TOR for consultant 1)   | Consultant 1 and GTA   | Mon 21.03.11 | Fri 08.04.11 | [Task bar spanning from Mar 2011 to Apr 2011]  |   |   |   |   |   |   |   |   |   |   |   |      |   |   |   |   |   |   |   |   |   |   |   |      |   |   |   |   |   |   |   |   |   |   |   |
| 13 | Distribution of the questionnaire to all UN Regional Commissions  | GTA  | Mon 11.04.11 | Fri 15.04.11 | [Task bar spanning from Apr 2011 to Apr 2011]  |   |   |   |   |   |   |   |   |   |   |   |      |   |   |   |   |   |   |   |   |   |   |   |      |   |   |   |   |   |   |   |   |   |   |   |
| 14 | Regional survey (each UN Regional Commission contacts different countries of its respective Region)   | Regional Commissions   | Mon 28.03.11 | Fri 15.04.11 | [Task bar spanning from Mar 2011 to Apr 2011]  |   |   |   |   |   |   |   |   |   |   |   |      |   |   |   |   |   |   |   |   |   |   |   |      |   |   |   |   |   |   |   |   |   |   |   |
| 15 | Regional survey (Distribution of the questionnaire to the countries contacted, collection of the replies and send it back to GTA and Consultant 1)  | Regional Commissions   | Mon 18.04.11 | Fri 06.05.11 | [Task bar spanning from Apr 2011 to May 2011]  |   |   |   |   |   |   |   |   |   |   |   |      |   |   |   |   |   |   |   |   |   |   |   |      |   |   |   |   |   |   |   |   |   |   |   |
| 16 | Set up of a global status report based on the replies to the questionnaires (see TOR for consultant 1)  | GTA and Consultant 1   | Mon 09.05.11 | Fri 03.06.11 | [Task bar spanning from May 2011 to Jun 2011]  |   |   |   |   |   |   |   |   |   |   |   |      |   |   |   |   |   |   |   |   |   |   |   |      |   |   |   |   |   |   |   |   |   |   |   |
| 17 | <b>(1.2) Review study of existing and under-research assessment models, methodologies for evaluation of transport CO2 emissions</b>   | Regional Commissions, GTA and Consultant 1   | Mon 09.05.11 | Fri 01.07.11 | [Gantt bar spanning from May 2011 to Jul 2011] |   |   |   |   |   |   |   |   |   |   |   |      |   |   |   |   |   |   |   |   |   |   |   |      |   |   |   |   |   |   |   |   |   |   |   |
| 18 | On the basis of the data provided in the replies to the questionnaire: Complete the inventory of existing models and its specifications   | Regional Commissions   | Mon 09.05.11 | Fri 03.06.11 | [Task bar spanning from May 2011 to Jun 2011]  |   |   |   |   |   |   |   |   |   |   |   |      |   |   |   |   |   |   |   |   |   |   |   |      |   |   |   |   |   |   |   |   |   |   |   |
| 19 | Analysis and ranking of the models which will be considered during the international expert meetings (see TOR for consultant 1)   | GTA and Consultant 1   | Mon 06.06.11 | Fri 01.07.11 | [Task bar spanning from Jun 2011 to Jul 2011]  |   |   |   |   |   |   |   |   |   |   |   |      |   |   |   |   |   |   |   |   |   |   |   |      |   |   |   |   |   |   |   |   |   |   |   |
| 20 | <b>(1.3) Development of recommendations on common approaches to data collection and sampling of inland transport CO2 emissions</b>  | GTA and Consultant 1   | Mon 04.07.11 | Fri 15.07.11 | [Gantt bar spanning from Jul 2011 to Aug 2011] |   |   |   |   |   |   |   |   |   |   |   |      |   |   |   |   |   |   |   |   |   |   |   |      |   |   |   |   |   |   |   |   |   |   |   |
| 21 | On the basis of the analysis and the ranking prepared, development of recommendations on common approaches on data collection and sampling methods (see TOR for consultant 1)   | GTA and Consultant 1   | Mon 04.07.11 | Fri 15.07.11 | [Task bar spanning from Jul 2011 to Aug 2011]  |   |   |   |   |   |   |   |   |   |   |   |      |   |   |   |   |   |   |   |   |   |   |   |      |   |   |   |   |   |   |   |   |   |   |   |
| 22 | <b>(1.4) Organization of an International Experts' Meeting on the uniform inland transport CO2 Assessment and Monitoring Framework tool (FoFITS) with a transport policy converter</b>  | UN staff, stakeholders, Consultant 2, GTA  | Mon 04.07.11 | Fri 07.10.11 | [Gantt bar spanning from Jul 2011 to Oct 2011] |   |   |   |   |   |   |   |   |   |   |   |      |   |   |   |   |   |   |   |   |   |   |   |      |   |   |   |   |   |   |   |   |   |   |   |
| 23 | Preparation of the invitations to the experts and distribution of it  | GTA  | Mon 04.07.11 | Fri 29.07.11 | [Task bar spanning from Jul 2011 to Aug 2011]  |   |   |   |   |   |   |   |   |   |   |   |      |   |   |   |   |   |   |   |   |   |   |   |      |   |   |   |   |   |   |   |   |   |   |   |
| 24 | Collection and upload on the Division webpage the background documents (global status report (1.1), ranking list of the existing models (1.2), and recommendations on common approaches to data collection and sampling for each input parameter (1.3)) | GTA  | Mon 18.07.11 | Fri 29.07.11 | [Task bar spanning from Aug 2011 to Aug 2011]  |   |   |   |   |   |   |   |   |   |   |   |      |   |   |   |   |   |   |   |   |   |   |   |      |   |   |   |   |   |   |   |   |   |   |   |
| 25 | International Experts' Meeting on the uniform inland transport CO2 Assessment and Monitoring framework tool (FoFITS) with a transport policy converter, to be held in conjunction with GRPE June 2011 session (see TOR for consultant 2)                | Attendance: Consultant 2, stakeholders, UN staff   | Mon 19.08.11 | Tue 20.08.11 | [Task bar spanning from Aug 2011 to Aug 2011]  |   |   |   |   |   |   |   |   |   |   |   |      |   |   |   |   |   |   |   |   |   |   |   |      |   |   |   |   |   |   |   |   |   |   |   |
| 26 | Report on International Experts' Meeting  | GTA  | Wed 21.08.11 | Fri 07.10.11 | [Task bar spanning from Aug 2011 to Oct 2011]  |   |   |   |   |   |   |   |   |   |   |   |      |   |   |   |   |   |   |   |   |   |   |   |      |   |   |   |   |   |   |   |   |   |   |   |
| 27 | <b>(1.5) Development of the Inland Transport CO2 Assessment and Monitoring framework tool with transport policy converter (FoFITS)</b>  | Consultant 2 and GTA   | Mon 26.09.11 | Fri 23.12.11 | [Gantt bar spanning from Sep 2011 to Dec 2011] |   |   |   |   |   |   |   |   |   |   |   |      |   |   |   |   |   |   |   |   |   |   |   |      |   |   |   |   |   |   |   |   |   |   |   |
| 28 | Development of the new model in order to materialize the specifications agreed by the experts during the International Experts' Meeting (see TOR for Consultant 2)  | Consultant 2 and GTA   | Mon 26.09.11 | Fri 28.10.11 | [Task bar spanning from Sep 2011 to Oct 2011]  |   |   |   |   |   |   |   |   |   |   |   |      |   |   |   |   |   |   |   |   |   |   |   |      |   |   |   |   |   |   |   |   |   |   |   |
| 29 | Implementation of the new model (see TOR for Consultant 2)  | Consultant 2 and GTA   | Mon 31.10.11 | Fri 11.11.11 | [Task bar spanning from Oct 2011 to Nov 2011]  |   |   |   |   |   |   |   |   |   |   |   |      |   |   |   |   |   |   |   |   |   |   |   |      |   |   |   |   |   |   |   |   |   |   |   |
| 30 | Verification of the new model (see TOR for Consultant 2)  | Consultant 2 and GTA   | Mon 14.11.11 | Fri 25.11.11 | [Task bar spanning from Nov 2011 to Nov 2011]  |   |   |   |   |   |   |   |   |   |   |   |      |   |   |   |   |   |   |   |   |   |   |   |      |   |   |   |   |   |   |   |   |   |   |   |
| 31 | Validation of the new model (see TOR for Consultant 2)  | Consultant 2 and GTA   | Mon 28.11.11 | Fri 23.12.11 | [Task bar spanning from Nov 2011 to Dec 2011]  |   |   |   |   |   |   |   |   |   |   |   |      |   |   |   |   |   |   |   |   |   |   |   |      |   |   |   |   |   |   |   |   |   |   |   |
| 32 | <b>(1.6) Development and setting up of the web-based application of the framework tool and the policy</b>   | Consultant 3   | Mon 28.11.11 | Fri 09.03.12 | [Gantt bar spanning from Dec 2011 to Mar 2012] |   |   |   |   |   |   |   |   |   |   |   |      |   |   |   |   |   |   |   |   |   |   |   |      |   |   |   |   |   |   |   |   |   |   |   |
| 33 | Familiarization with the new model (see TOR for Consultant 3)   | Consultant 3   | Mon 28.11.11 | Fri 30.12.11 | [Task bar spanning from Dec 2011 to Dec 2011]  |   |   |   |   |   |   |   |   |   |   |   |      |   |   |   |   |   |   |   |   |   |   |   |      |   |   |   |   |   |   |   |   |   |   |   |
| 34 | Development and implementation of the new webpage (see TOR for Consultant 3)  | Consultant 3   | Mon 02.01.12 | Fri 24.02.12 | [Task bar spanning from Jan 2012 to Feb 2012]  |   |   |   |   |   |   |   |   |   |   |   |      |   |   |   |   |   |   |   |   |   |   |   |      |   |   |   |   |   |   |   |   |   |   |   |
| 35 | Development of the user manual in English only (see TOR for Consultant 3)   | Consultant 3   | Mon 06.02.12 | Fri 09.03.12 | [Task bar spanning from Feb 2012 to Mar 2012]  |   |   |   |   |   |   |   |   |   |   |   |      |   |   |   |   |   |   |   |   |   |   |   |      |   |   |   |   |   |   |   |   |   |   |   |
| 36 | <b>(1.7) Piloting out (at least one per region) the inland transport CO2 monitoring and assessment tool with transport policy converter (FoFITS)</b>  | Consultant 3   | Mon 02.01.12 | Fri 15.06.12 | [Gantt bar spanning from Jan 2012 to Jun 2012] |   |   |   |   |   |   |   |   |   |   |   |      |   |   |   |   |   |   |   |   |   |   |   |      |   |   |   |   |   |   |   |   |   |   |   |

