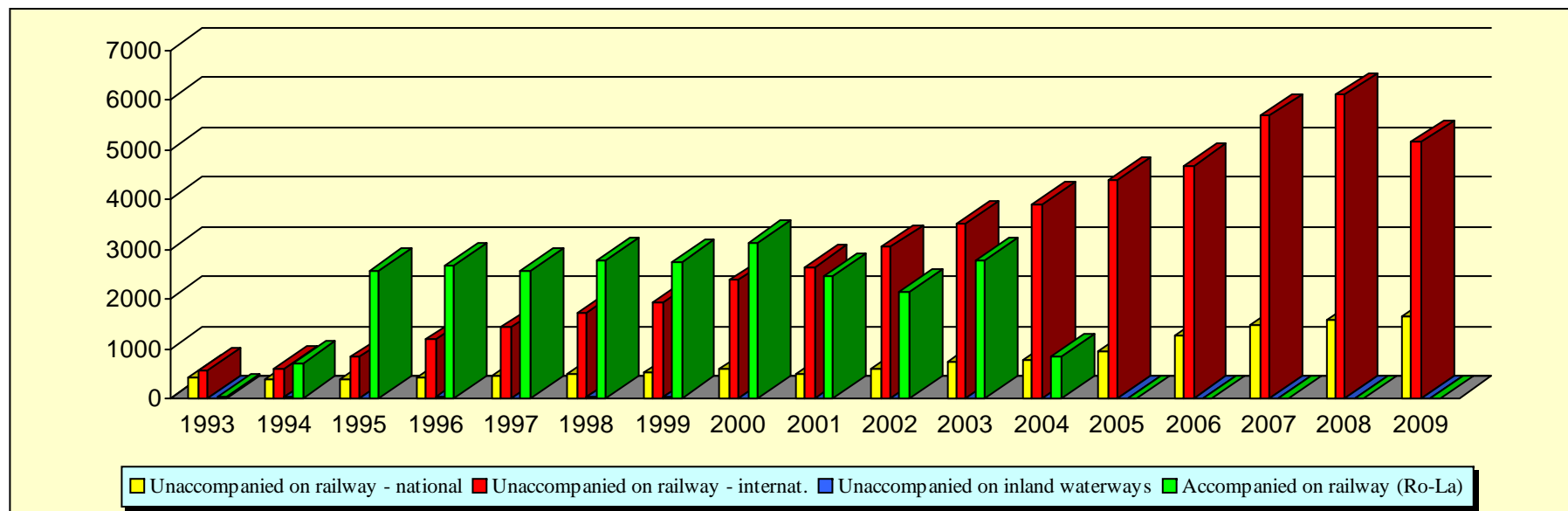


1. Development of Combined Transport in the Czech Republic

Thousand gross tons]



[Thousand gross tons]

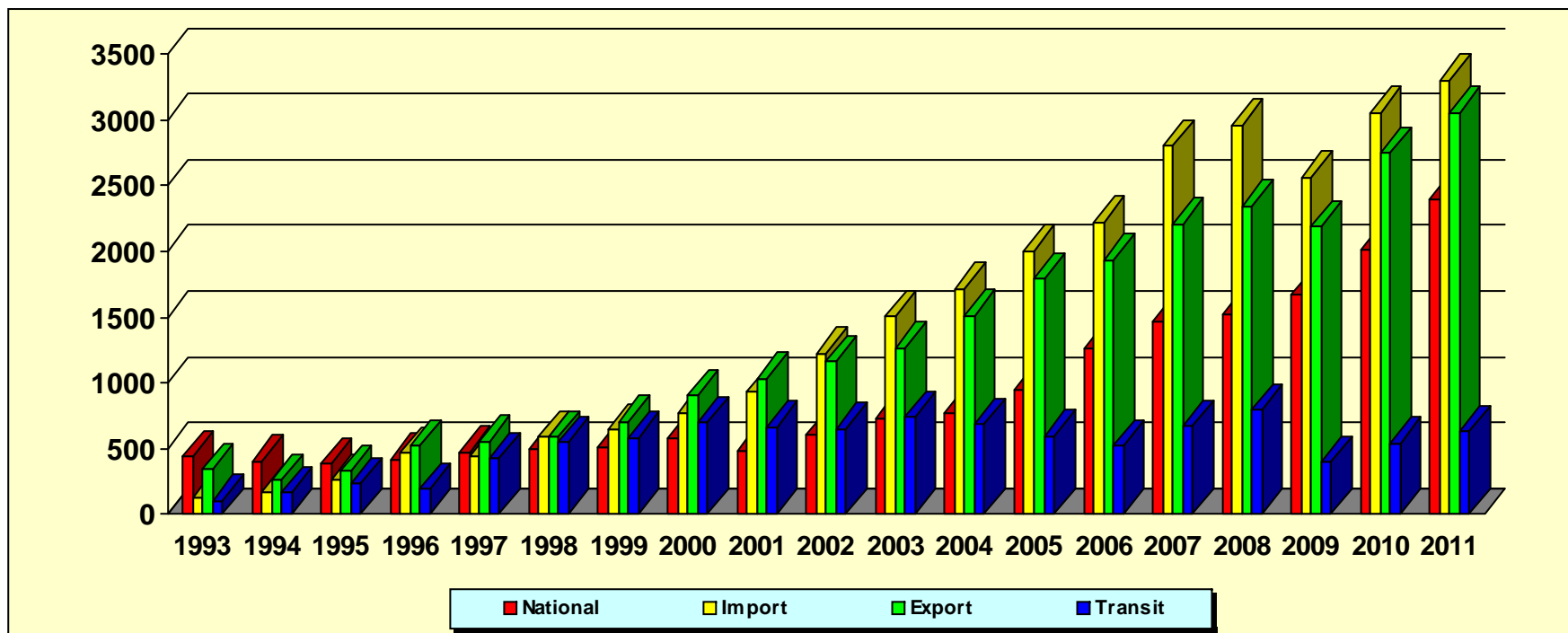
Year	1993	1994	1995	1996	1997	1998	1999	2000	2001	2002	2003	2004	2005	2006	2007	2008	2009	2010	2011
Unaccompanied on railway - national	438	404	388	422	474	496	518	584	487	601	734	775	947	1.257	1.471	1.517	1.668	2.007	2.396
Unaccompanied on railway - international	578	605	826	1.182	1.425	1.731	1.931	2.379	2.629	3.039	3.511	3.913	4.389	4.677	5.681	6.097	5.150	6.345	6.984
Unaccompanied on inland waterways	5	18	10	27	14	18	19	8	11	11	5	2	2	3	0	0	0	0	0
Unaccompanied transport total	1.021	1.027	1.224	1.631	1.913	2.245	2.468	2.971	3.127	3.651	4.250	4.690	5.338	5.937	7.152	7.614	6.818	8.352	9.380
Accompanied on railway (Ro-La)	27	719	2.557	2.686	2.575	2.774	2.749	3.122	2.463	2.149	2.784	837	0	0	0	0	0	0	0
Combined transport total	1.048	1.746	3.781	4.317	4.488	5.019	5.217	6.093	5.590	5.800	7.034	5.527	5.338	5.937	7.152	7.614	6.818	8.352	9.380

Unaccompanied transport includes only loaded transport units (containers, swap bodies and semi trailers). Accompanied transport includes all carried road vehicles. International includes import, export and transit.

Source: Statistical sheets of transport DOP (MD) 7-01 (railway), DOP (MD) 1-04 and DOP (MD) 5-04 (inland waterways).

2. Development of Unaccompanied Road-Rail Combined Transport in the Czech Republic

[Thousand gross tons]



[Thousand gross tons]

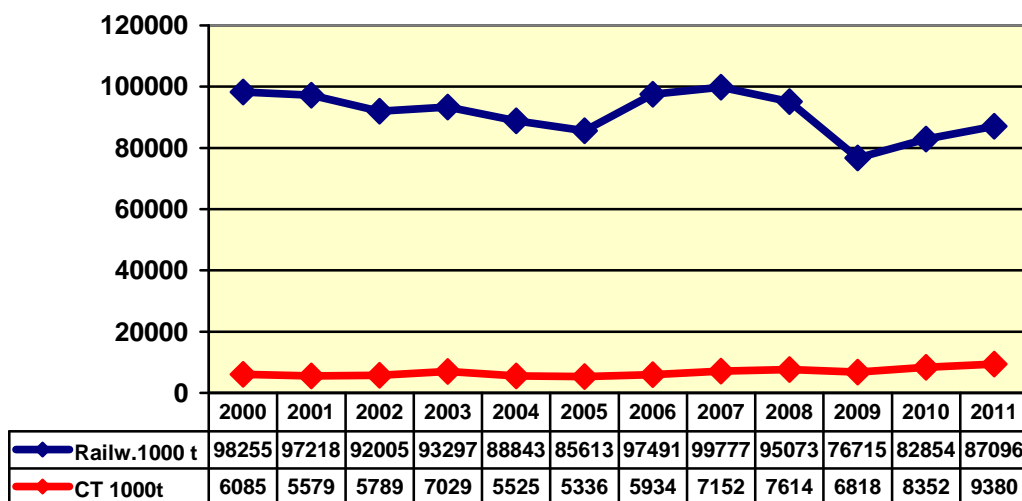
Year	1993	1994	1995	1996	1997	1998	1999	2000	2001	2002	2003	2004	2005	2006	2007	2008	2009	2010	2011
<i>National</i>	438	404	388	422	474	496	518	584	487	601	734	775	947	1.257	1.471	1.517	1.668	2.007	2.396
Import	131	172	263	465	443	593	642	774	931	1.224	1.503	1.718	2.001	2.220	2.799	2.959	2.560	3.052	3.299
Export	344	266	329	519	557	592	707	907	1.034	1.166	1.267	1.512	1.793	1.933	2.209	2.342	2.187	2.748	3.056
Transit	103	167	234	198	425	546	582	698	664	649	741	683	595	524	673	796	403	545	629
Total	1.016	1.009	1.214	1.604	1.899	2.227	2.449	2.963	3.116	3.640	4.245	4.688	5.336	5.934	7.152	7.614	6.818	8.352	9.380

Includes only loaded transport units (containers, ab-roll containers, swap bodies and from the year 2004 also semi-trailers)

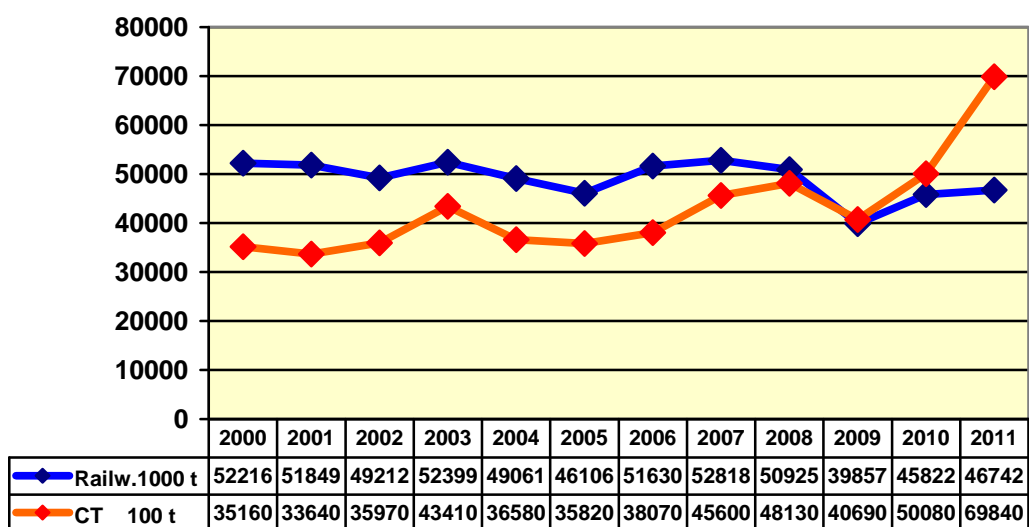
Source: Statistical sheets of transport DOP (MD) 7-01

3.1 Railway Freight Transport and Combined Transport (CT) - Czech Republic

Figures in thousand tons



3.2 Comparison of the International Railway Freight Transport and Combined Transport - Czech Republic



Source: Statistical yearbooks of transport, Statistical sheets of transport DOP (MD) 7-01