



Transport Integration Group Ltd.

The development of transport infrastructure of St. Petersburg on the basis of public-private partnership



Svetlana Vorontsova, Vice-President

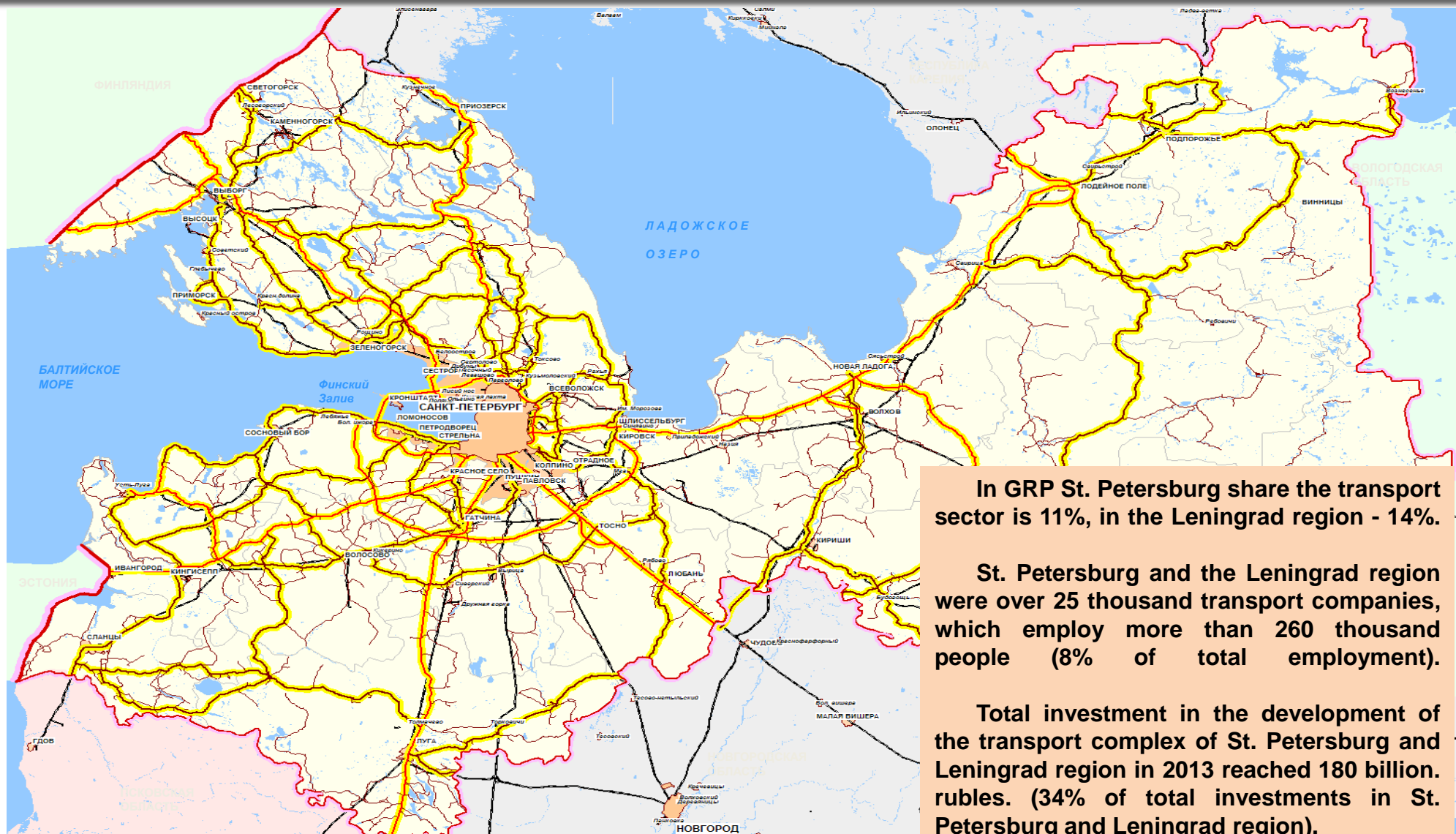
08.09.2014

The main types of contracts public-private partnerships in the transport infrastructure

- ➔ concession agreement with the direct toll
- ➔ concession agreement with availability payments
- ➔ contract lifecycle
- ➔ operating agreement
- ➔ long-term investment agreement



The geopolitical position of St. Petersburg in the North-West of the Russian Federation



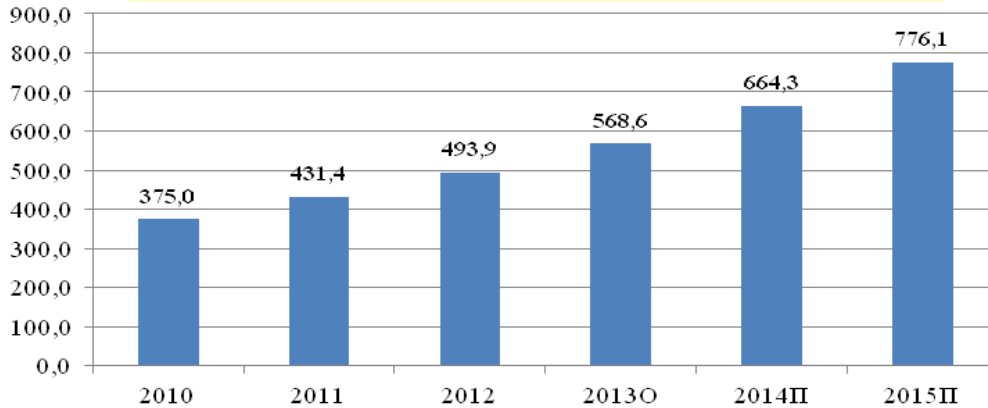
In GRP St. Petersburg share the transport sector is 11%, in the Leningrad region - 14%.

St. Petersburg and the Leningrad region were over 25 thousand transport companies, which employ more than 260 thousand people (8% of total employment).

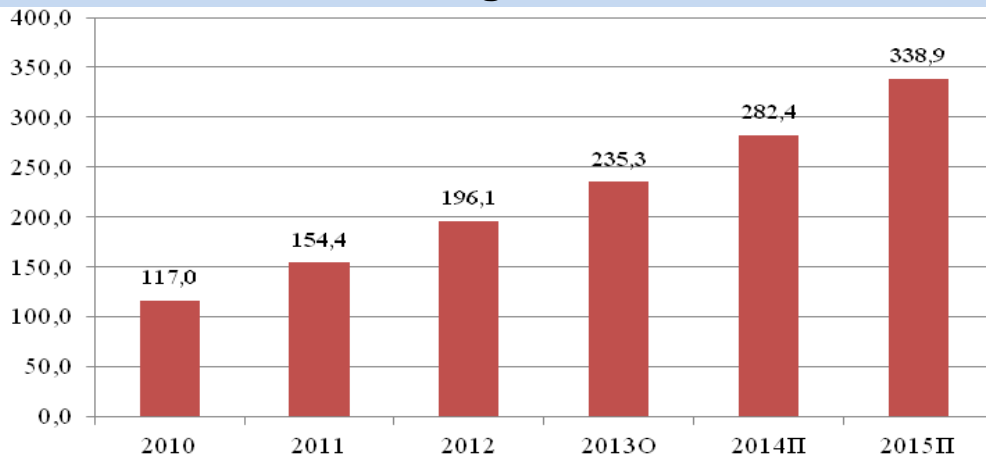
Total investment in the development of the transport complex of St. Petersburg and Leningrad region in 2013 reached 180 billion rubles. (34% of total investments in St. Petersburg and Leningrad region).

Indicators of investment attractiveness of St. Petersburg

Investments in fixed capital, bln. Rubles



Foreign investment per inhabitant of St. Petersburg, USD USA



Investment rating of St. Petersburg

1st place in the Russian Federation

Among the regions of Russia as to easiness business registration

DOING BUSINESS

Baa1

Stable city where changes are unlikely

Rating MOODY'S INVESTORS SERVICE

BBB

Low level of debt, strong financial performance
Ratings FITCH RATINGS I STANDARD & POOR'S

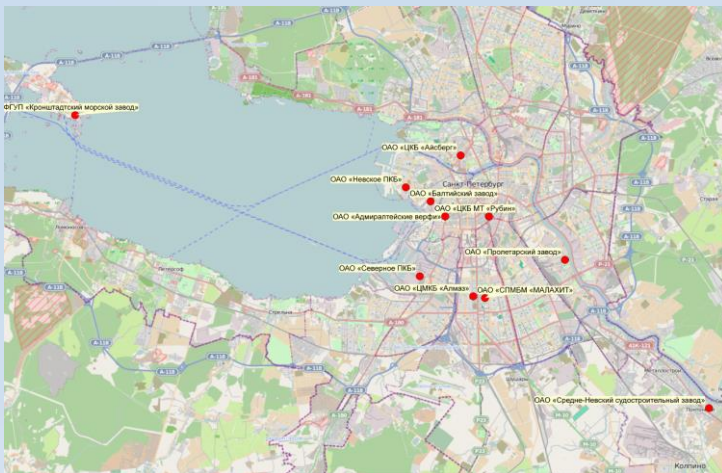
1st place in the Russian Federation

Level of social and economic development

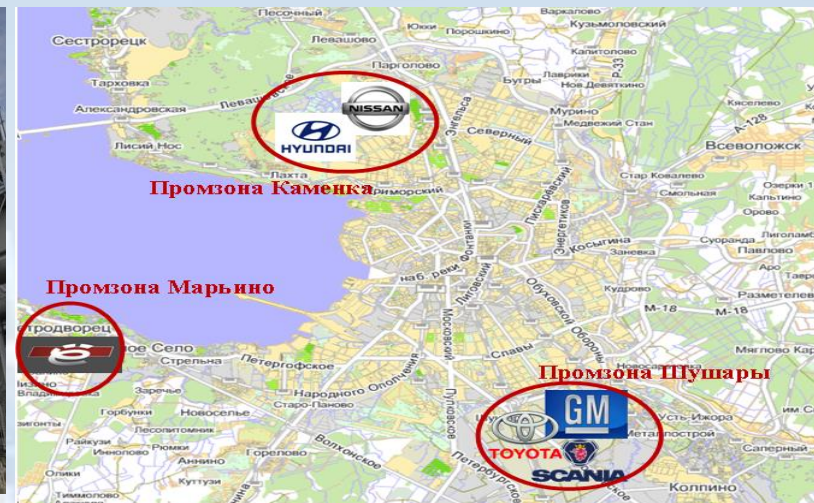
"RIA RATING"

The development of high-tech industries St. Petersburg

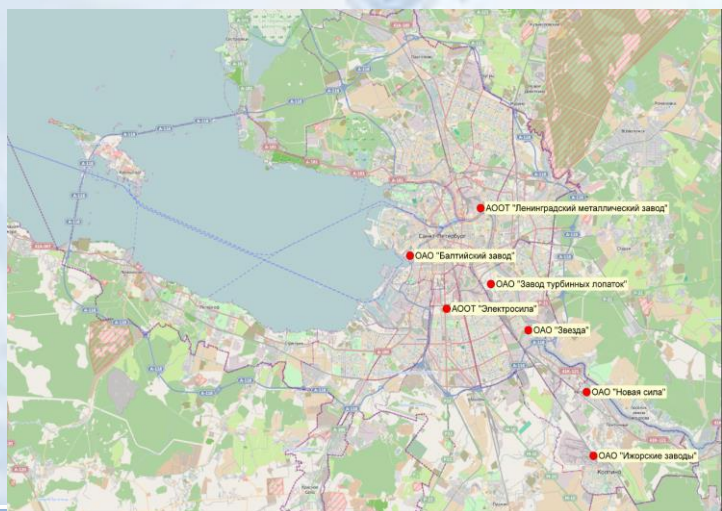
Shipbuilding cluster



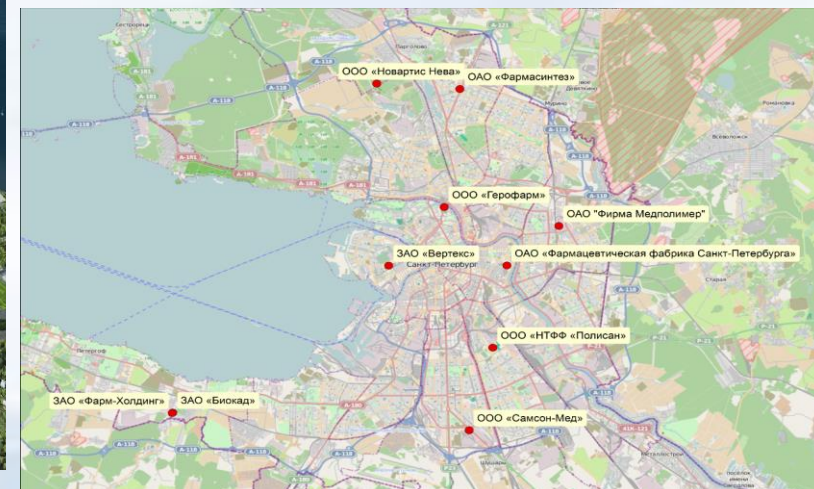
Automotive cluster



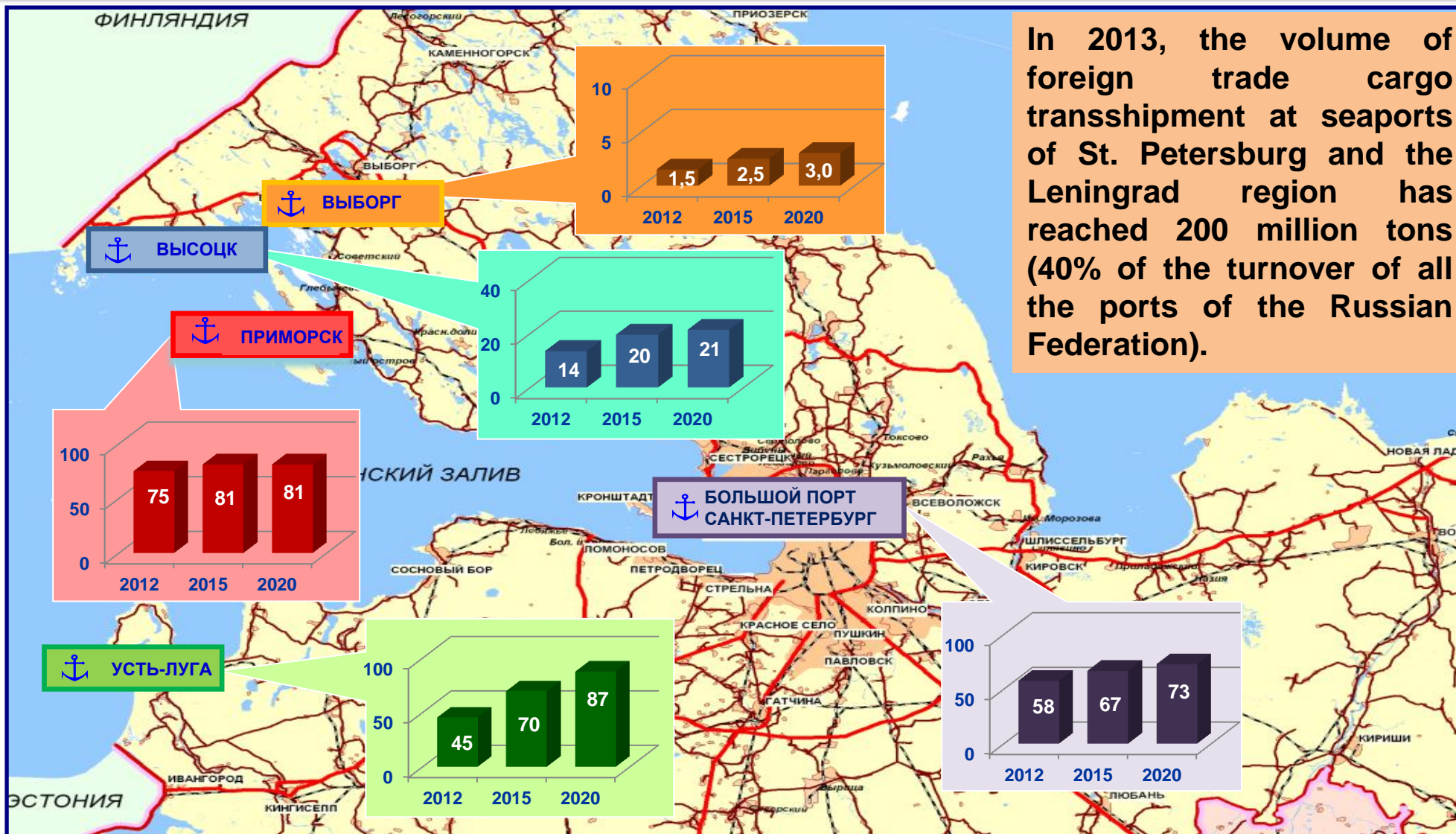
Power engineering cluster



Pharmaceutical cluster



The development of sea ports located in Saint-Petersburg and Leningrad region



In 2013, the volume of foreign trade cargo transshipment at seaports of St. Petersburg and the Leningrad region has reached 200 million tons (40% of the turnover of all the ports of the Russian Federation).

*На основе данных Стратегии развития морской портовой инфраструктуры России на период до 2030 г. (ФГУП «Росморпорт», 2012 г.)

The development of the seaport "Ust-Luga"

Cargo turnover seaport of «Ust-Luga», million tons

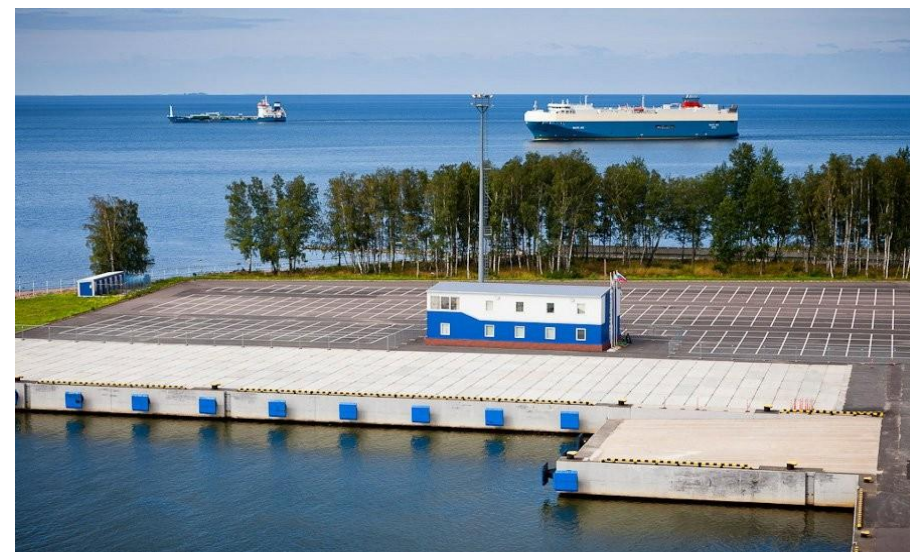
| | 2009 г. | 2010 г. | 2011 г. | 2012 г. | 2013 г. |
|----------------|---------|---------|---------|---------|---------|
| Cargo turnover | 8,9 | 10,6 | 20,9 | 45,2 | 61,1 |

According to a forecast turnover of the port of "Ust-Luga" will reach:

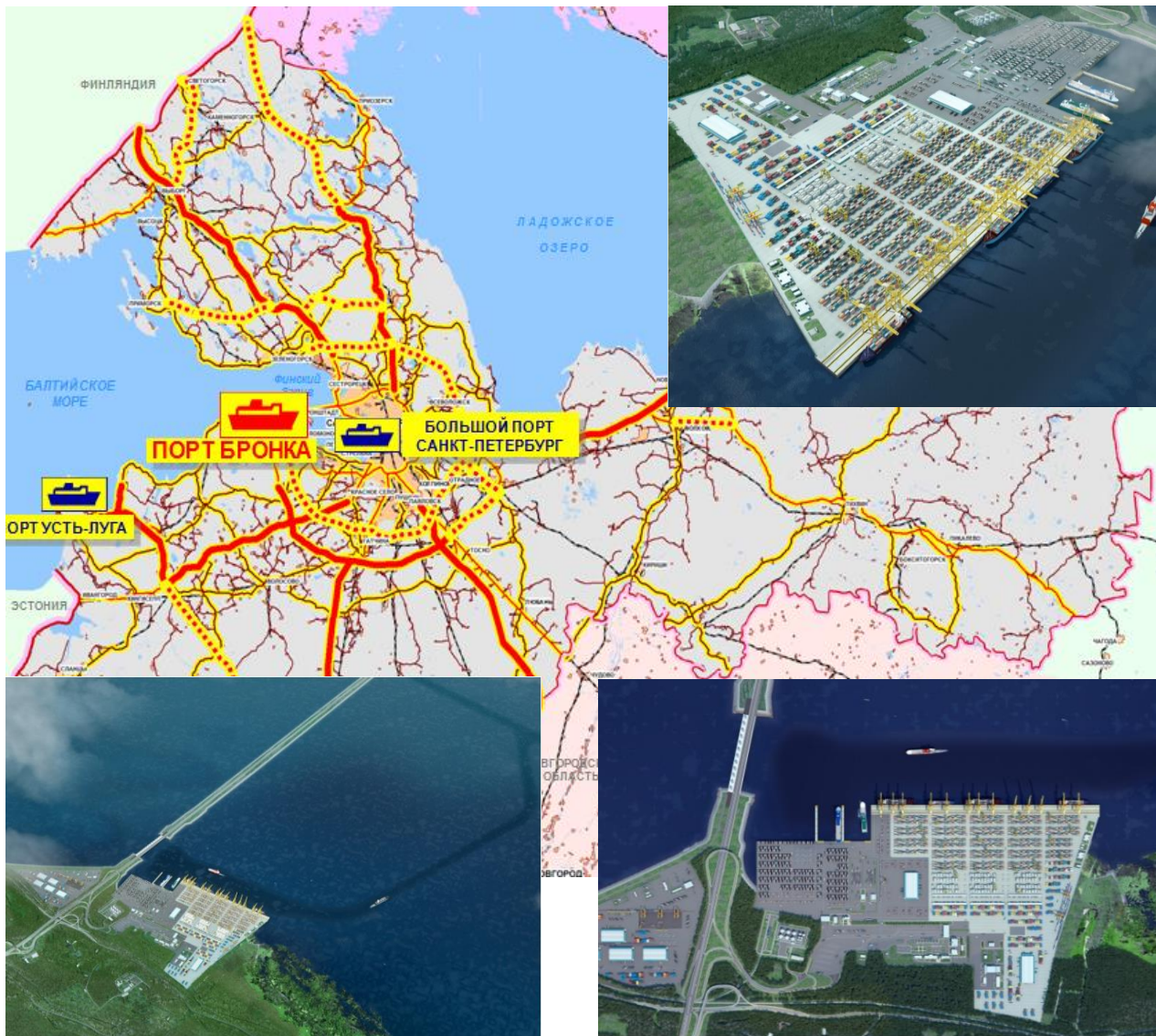
- 2020 - 73 million tons;
- 2030 - 100 million tons.

Near the port is planned to build new town with a population of 35 thousand. persons and the creation of port and industrial zone.

Investments in construction of "Ust-Luga" port amounted to about 195 billion rubles.



The construction of the seaport "Bronka"



Perspective cargo turnover sea port:

- containers - 1.9 million TEU/ per year;
- ferry (ro-ro) cargoes - 260 thousand units/ per year.

Total investments in the construction of the port, "Bronka" is 62.1 billion rubles, including private ones - 40.4 billion. rubles. (65%)

Ferry and passenger terminal on Vasilevsky Island in St. Petersburg

Performance indicators of passenger port "Marine Facade"

| | 2009 г. | 2010 г. | 2011 г. | 2012 г. | 2013 г. |
|-----------------------------------|---------|---------|---------|---------|---------|
| Passenger traffic, thousand pers. | 248 | 373 | 528 | 422 | 504 |
| Number of ship calls, units | 115 | 254 | 327 | 226 | 261 |



Sources of Funding:
 - federal budget – 8.0 billion. rubles. (25%);
 - private investors - 23.4 billion. rubles. (75%).

Total funding 31.4 billion rubles (100%)



The increase in the number of vehicles and level of motorization in St. Petersburg

The growth of motorization level



The increase in the number of vehicles



The construction of high-speed toll road M-11 Moscow - St Petersburg

**High-speed toll road M11
Moscow - St. Petersburg:**
- Length of the road - 684 km;
- Commissioning - 2018;
- Project cost - \$ 350 billion. rubles.



ПРОЕКТИРУЕМАЯ СКОРОСТНАЯ АВТОМОБИЛЬНАЯ ДОРОГА МОСКВА – САНКТ-ПЕТЕРБУРГ



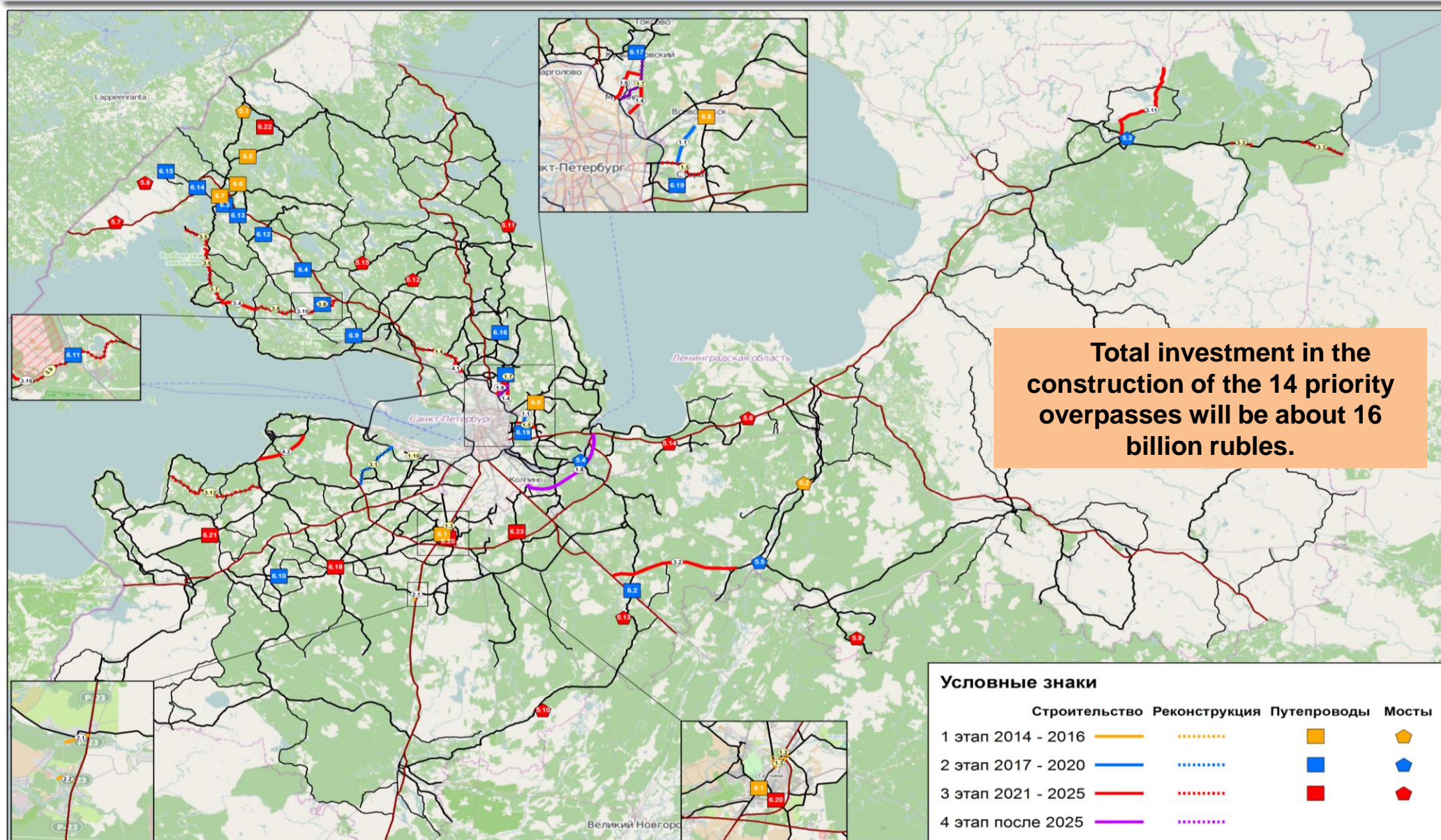
Toll highways Western High-Speed Diameter



Cost of the project - 212.7 billion rubles, including: private investors - 108 billion rubles. (50%); Investment Fund of the Russian Federation - 50.7 billion rubles. (24%); the budget of St. Petersburg - 54 billion rubles. (26%).

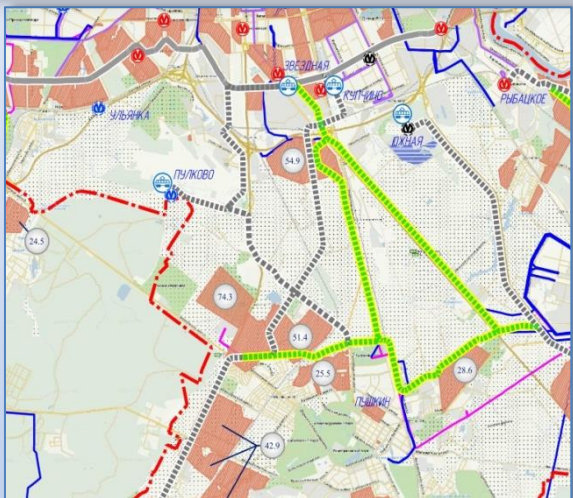
Completion date - 2016.

Construction of overpass through the railway in the Leningrad region

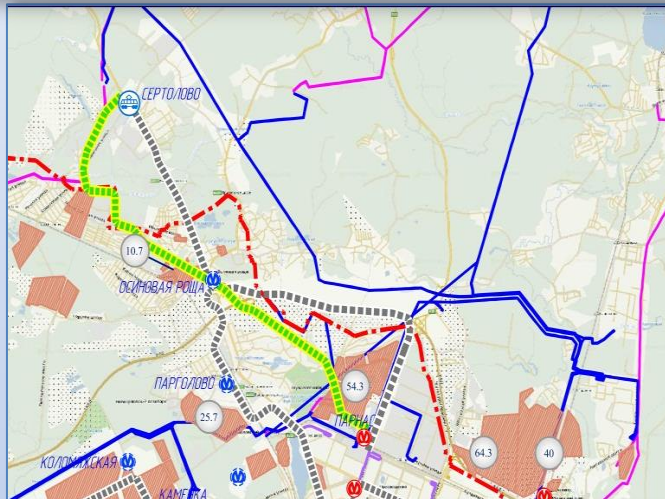


The development of light rail transport in St. Petersburg

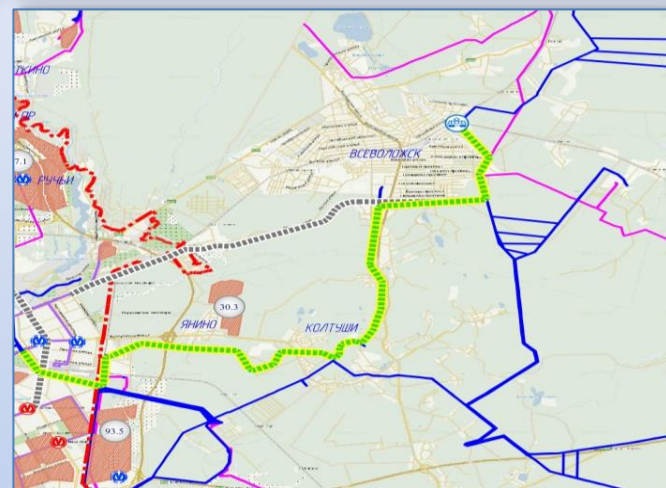
Direction of the LRT to Pulkovo



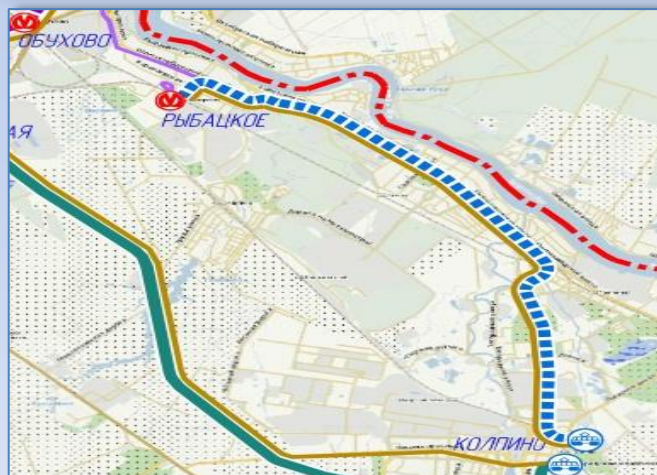
Direction of the LRT on Sertolovo



Direction of the LRT on the Vsevolozhsk



Direction of LRT on Kolpino



The total investment in the construction of light rail transport will be about \$ 35 billion. Rubles.

Creating transportation hubs in St. Petersburg

Transport hub "Parnassus"

Transport hub "Devyatkino"



Transport hub "South-East" (Kudrovo)

Transport hub "Kupchino"

Transport hub "Rybatskoe"

The total investment in the construction of the transport hub will be about \$ 19 billion rubles

The Pulkovo airport in St. Petersburg



The passenger traffic of “Pulkovo” airport

| Type of transportation | 2009 | 2010 | 2011 | 2012 | 2013 |
|----------------------------------|------|------|------|------|------|
| Passengers, in total, including: | 6,8 | 8,4 | 9,6 | 11,2 | 12,9 |
| International flights | 3,5 | 4,4 | 5,1 | 6,2 | 7,0 |
| domestic flights | 3,3 | 4,0 | 4,5 | 5,0 | 5,9 |

Investments in the development of airport "Pulkovo"

The consortium "Northern capital gateway" and the Government of St. Petersburg signed a concession agreement for the reconstruction and operation of the airport until 2039. The project is being implemented under the scheme of public-private partnership, without attracting public investment. Private investment will be about 60 billion rubles currently built a new passenger terminal, hotel, business centre and Parking .