

Financing of Transport Infrastructure Projects in the Czech Republic



Ondřej Kališ

Czech Republic

The Czech Republic is the state in the central Europe.

- population: 10,5 mil. people; area: 78 866 km²
- capital city: Prague
- length of motorways: 1 228 km
- length of roads: 54 600 km
- length of railways: 9 600 km



Sources of Road Financing

Financing of the transport infrastructure secures the State Fund for Transport Infrastructure.

For this year it is planned to put 83 mld. Kč (ca. 3 mld. €) into the transport infrastructure (roads, railways, waterways etc.).

Sources of these finances are:

- **national sources – 76 %**
- **European union (OPT) – 23 %**
- **CEF (Connecting Europe Facility) – 1 %**
- **PPP – first project is in preparation**

Road Financing in Numbers

In 2016 will start constructions of roads with estimated costs:

- new motorways and state roads – 27,6 mld. Kč (ca. 1 mld. €)
- modernization of motorway D1 – 4,2 mld. Kč (ca. 156 mil. €)
- reconstructions and maintenance of motorways – 3,2 mld. Kč (ca. 119 mil. €)
- reconstructions and maintenance of state roads – 9 mld. Kč (ca. 333 mil. €)

Reconstructions of Regional Roads

Since 2016 it is allowed to give state contributions for reconstructions of regional roads.

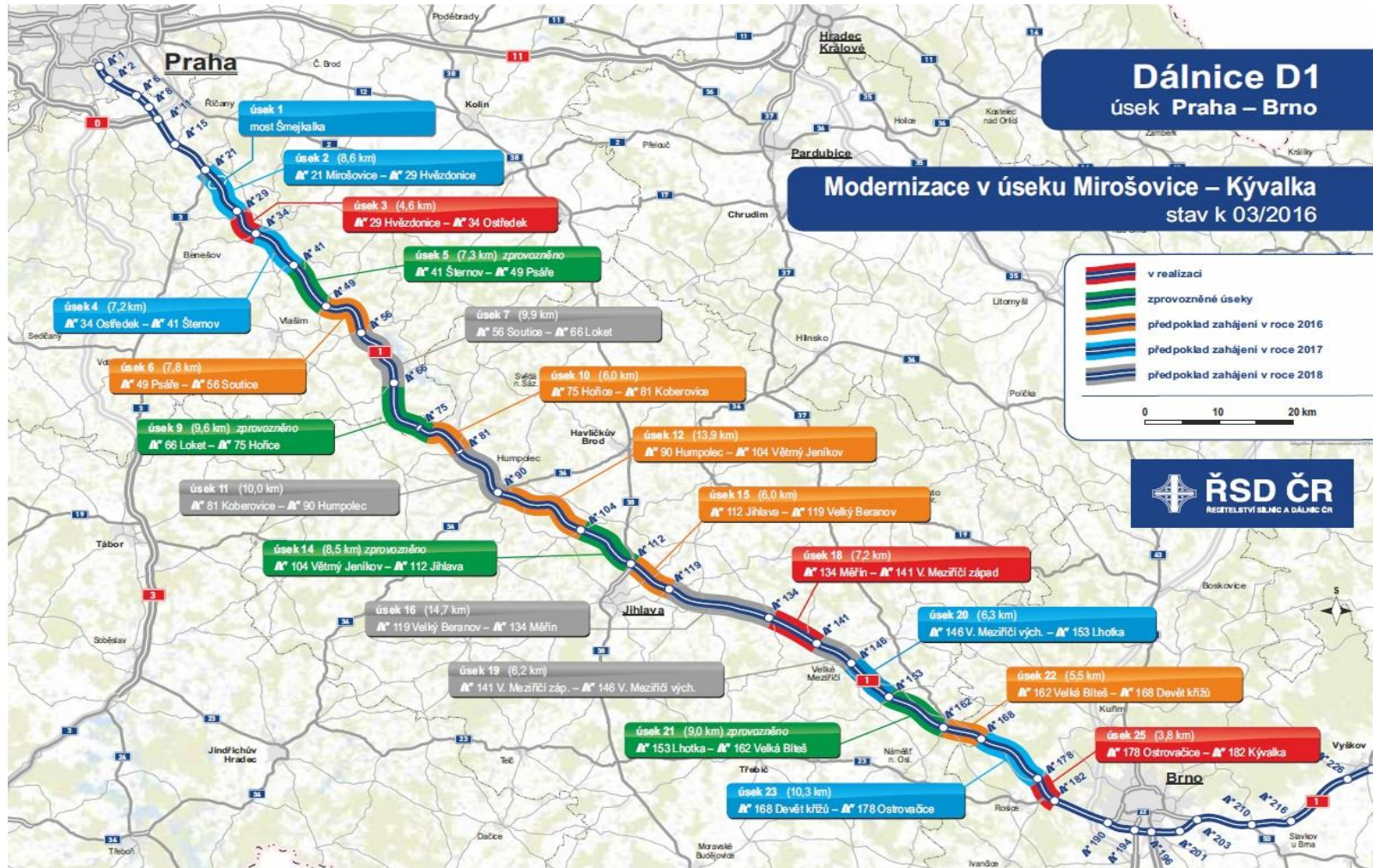
In 2016 the regions will receive 3 mld. Kč - it's ca. 111 mil. € - for reconstructions of their small roads.



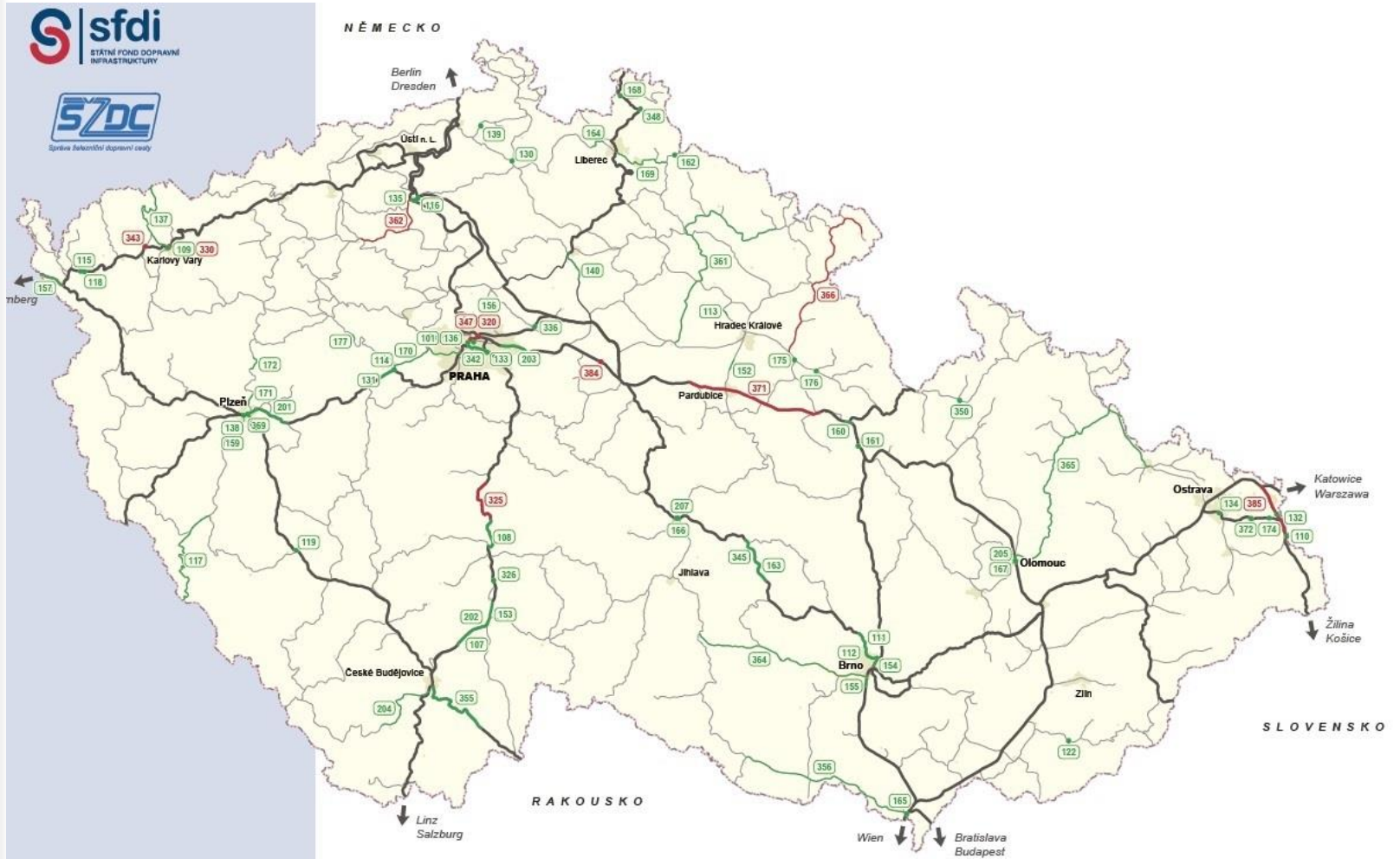
Road Infrastructure in CZ



Modernization of the motorway D1

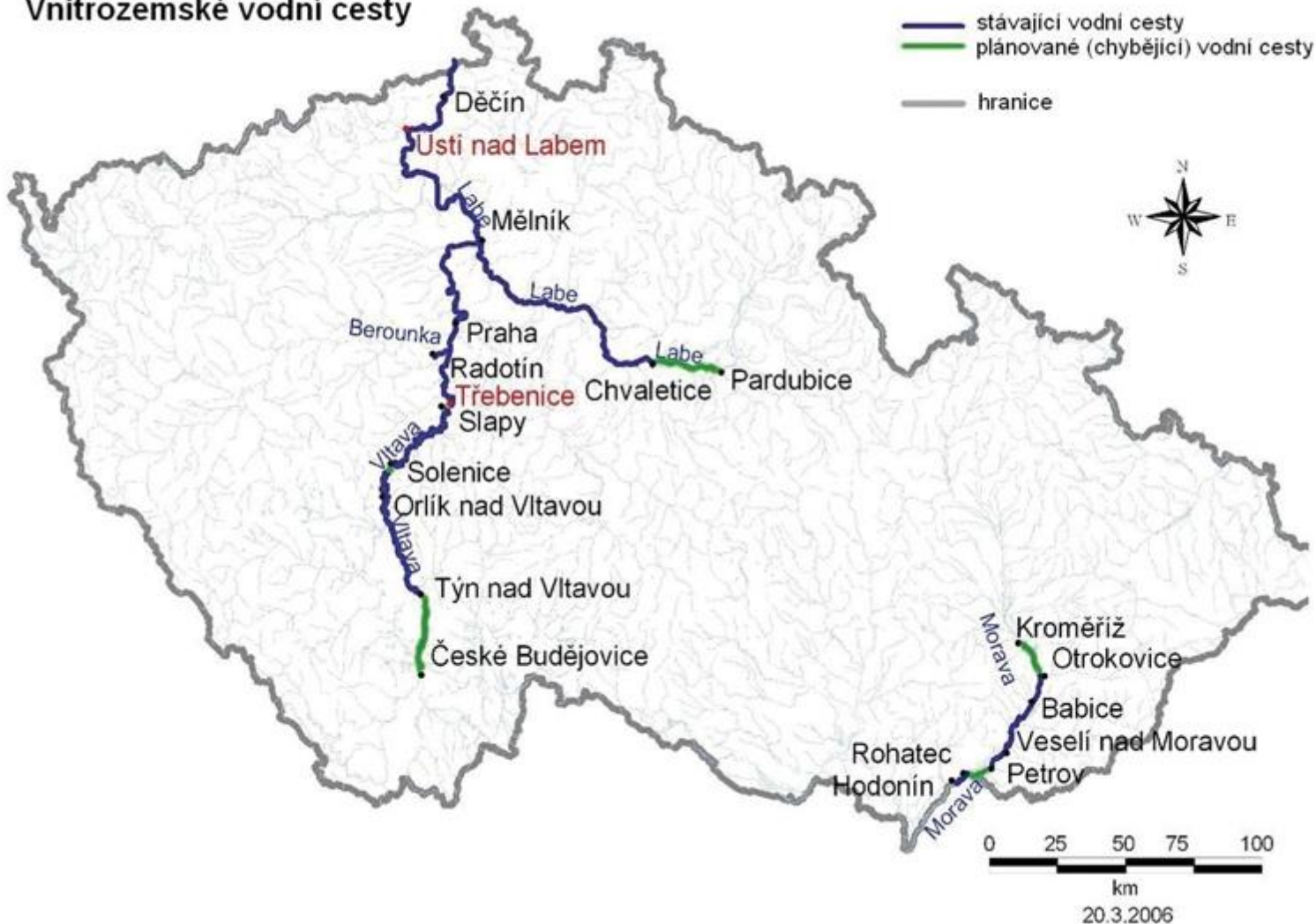


Railway infrastructure in CZ

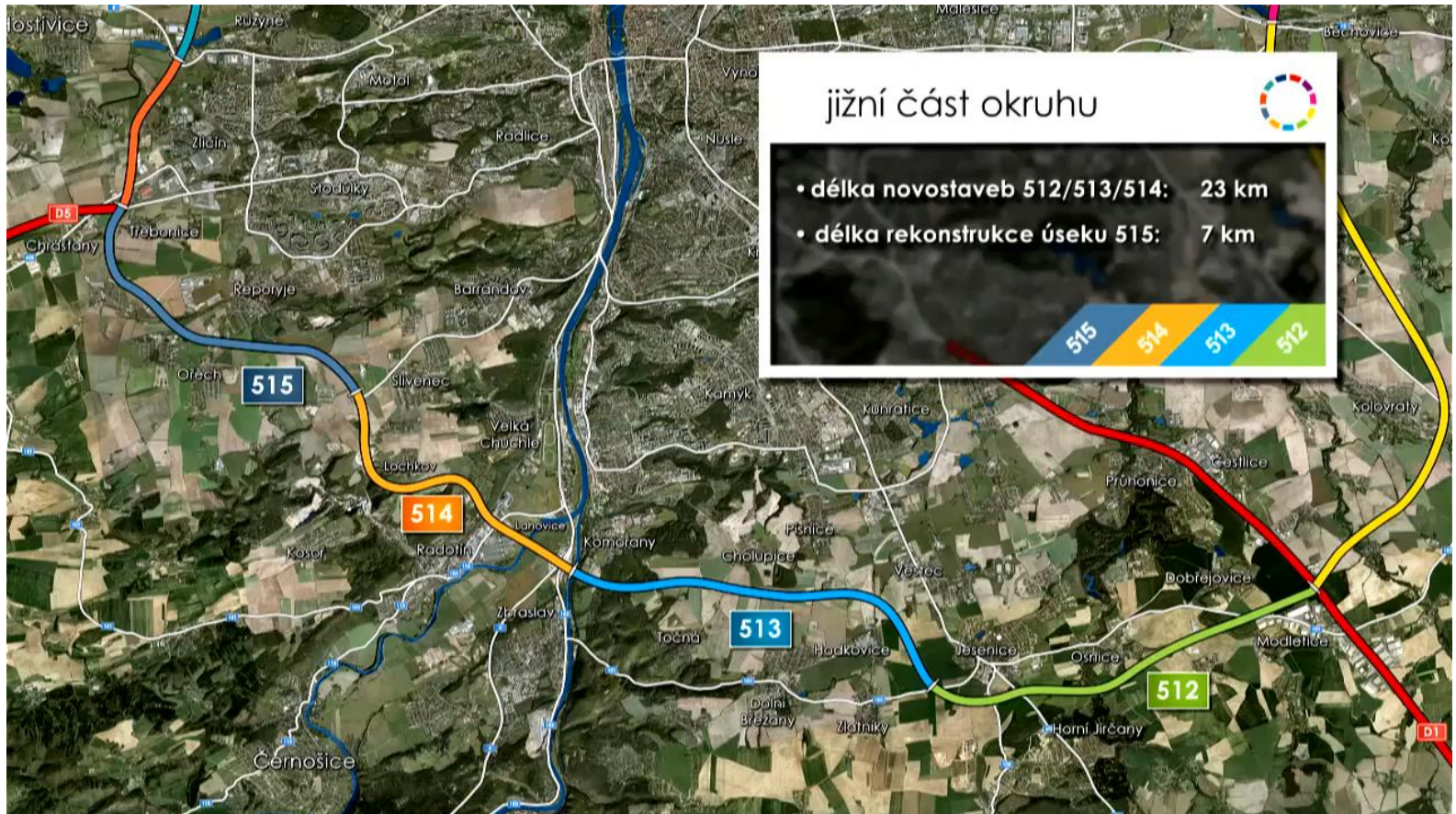


Waterway infrastructure in CZ

Vnitrozemské vodní cesty



One project: Prague circle



One project: Prague circle





Thank you for your attention

