

Economic Commission for Europe

Inland Transport Committee

10 January 2017

Working Party on the Transport of Dangerous Goods

**Joint Meeting of Experts on the Regulations annexed to the
European Agreement concerning the International Carriage
of Dangerous Goods by Inland Waterways (ADN)**

Thirtieth session

Geneva, 23-27 January 2017

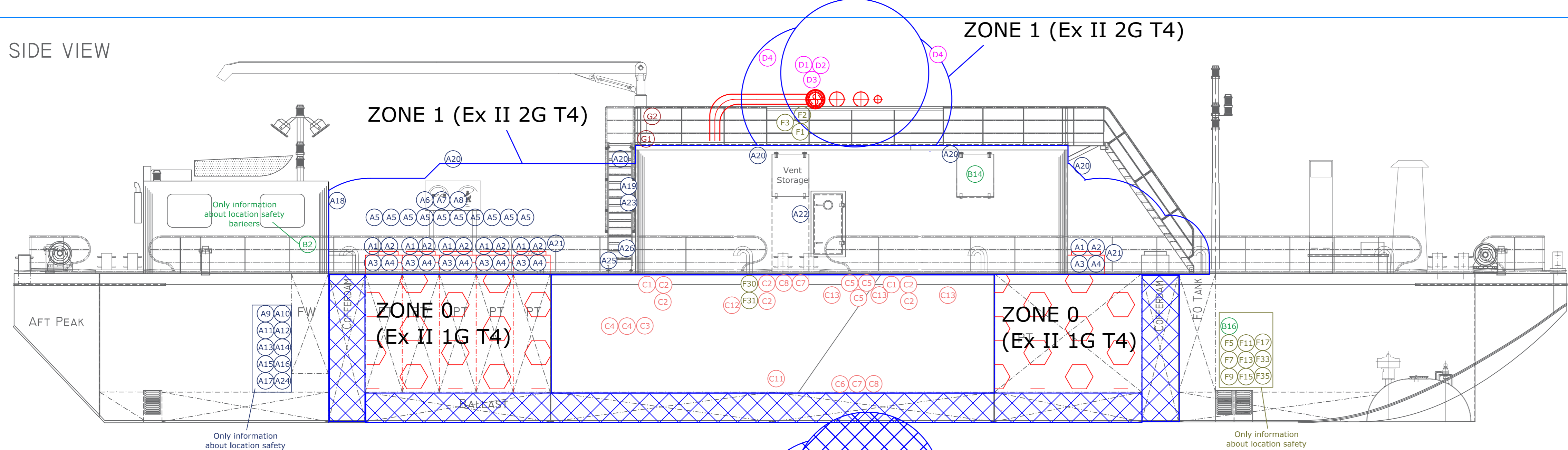
Item 4 (b) of the provisional agenda

**Implementation of the European Agreement
concerning the International Carriage of
Dangerous Goods by Inland Waterways (ADN):
special authorizations, derogations and equivalents**

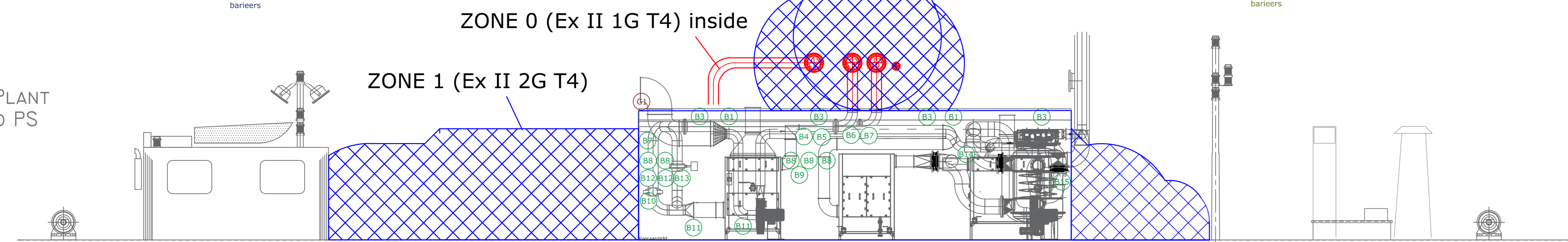
**Addendum to ECE/TRANS/WP.15/AC.2/2017/15 – Request
for a derogation for Don Quichot (ENI 02336771)**

Transmitted by the Government of the Netherlands

SIDE VIEW

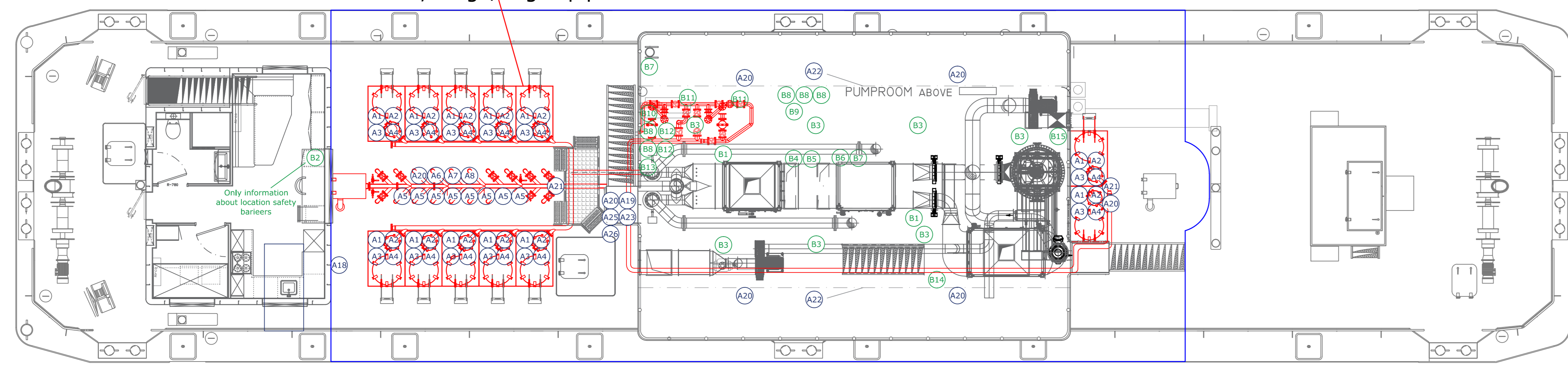


VIEW AT DE-GAS PLANT
APPROX. CL-2085 TO PS



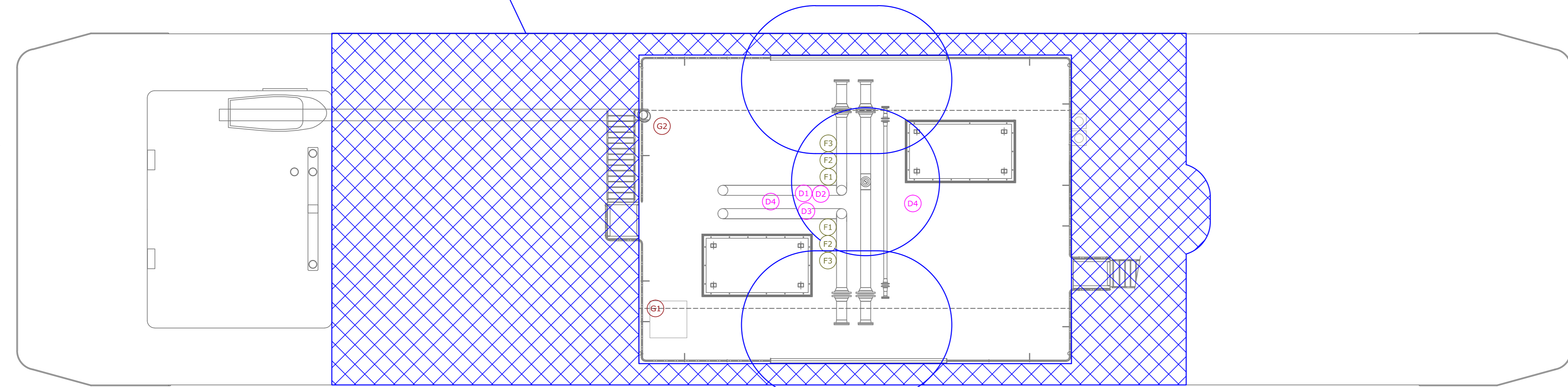
ZONE 0 (Ex II 1G T4) inside
trunk, cargo/degas pipes

VIEW AT DECK



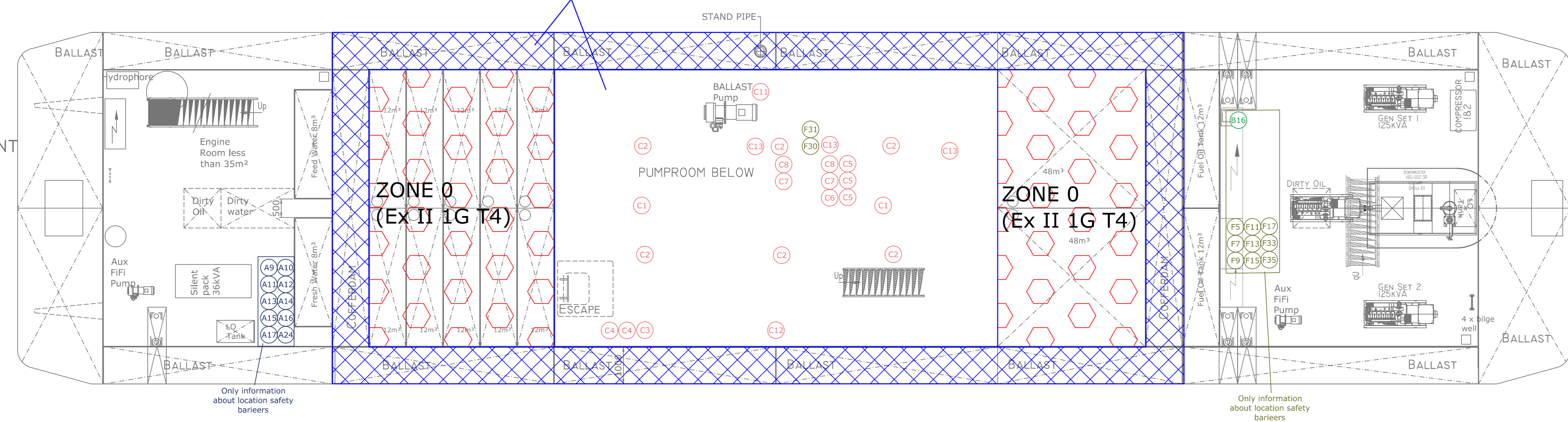
ZONE 1 (Ex II 2G T4)

VIEW AT TOP DECK

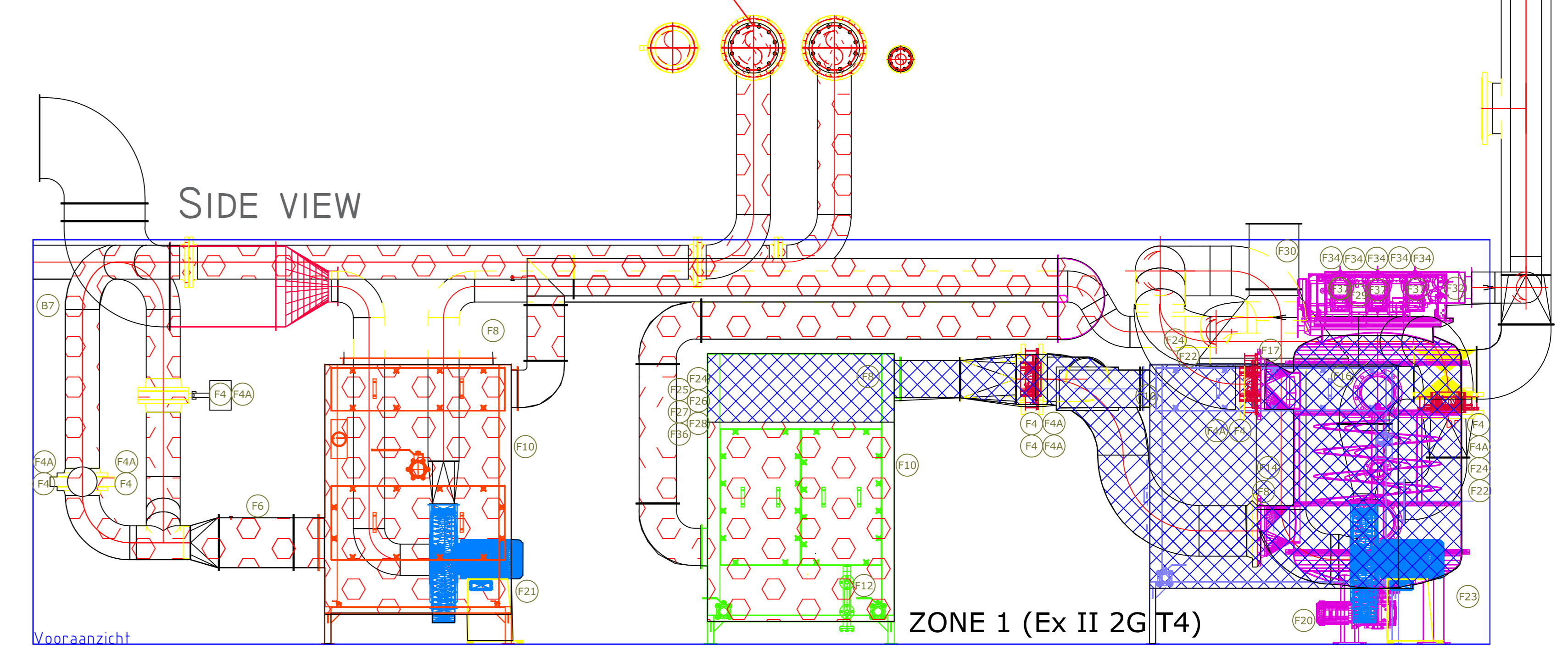


ZONE 1 (Ex II 2G T4)

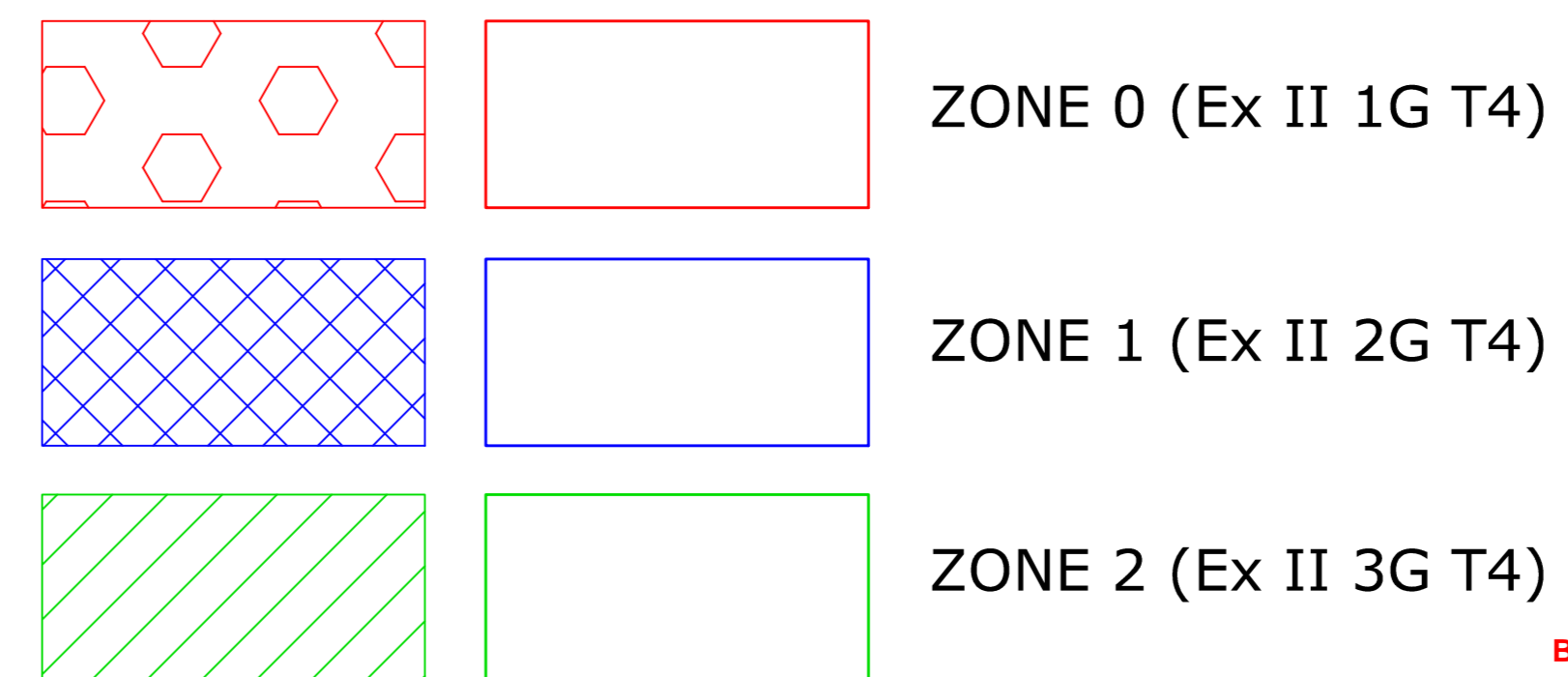
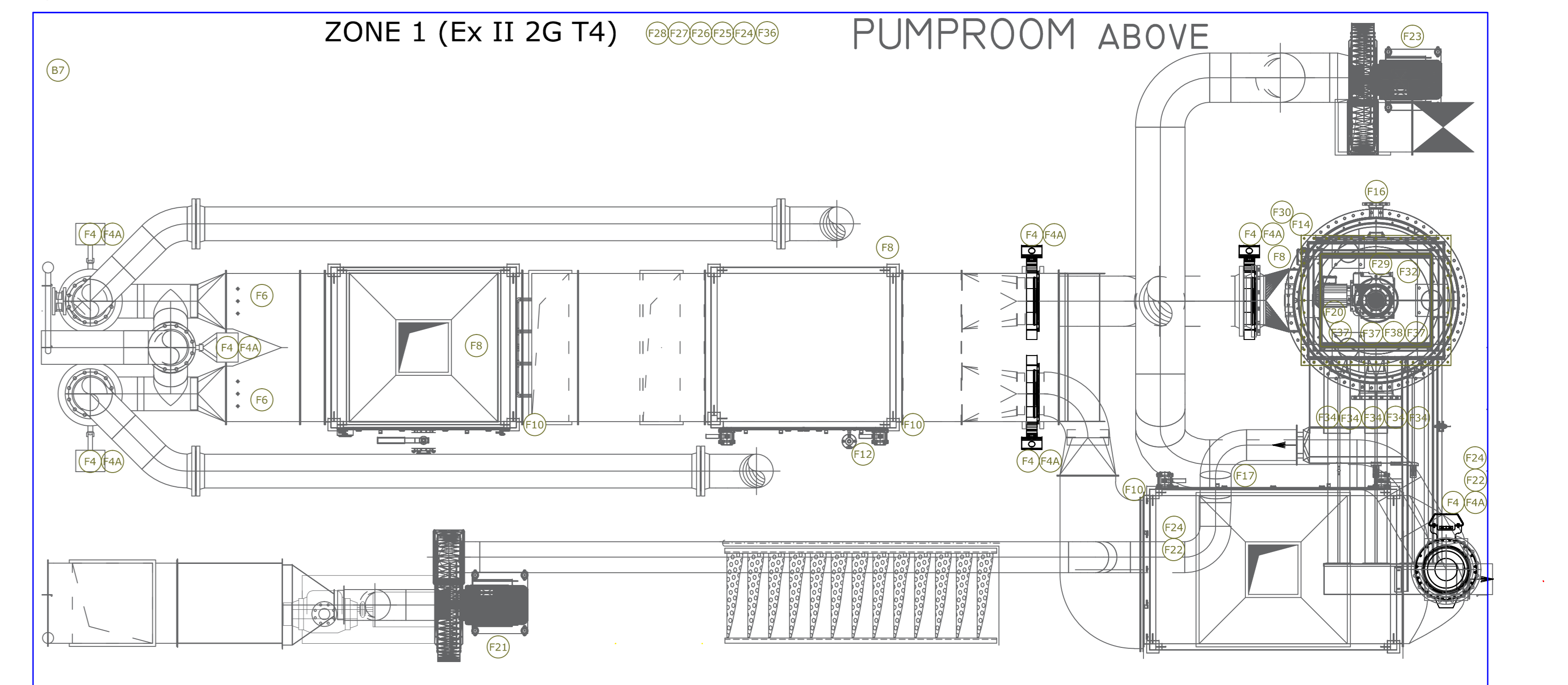
VIEW BELOW DECK
TANK ARRANGEMENT



ZONE 0 (Ex II 1G T4) inside



TOP VIEW



BUREAU VERITAS Section ...27930L.
Examined within the General Conditions of Marine Branch of BUREAU VERITAS in order to check the compliance with the applicable requirements of BV Rules for Inland Navigation NR217.
ADN Rules.
All particulars not shown on this document are assumed to be as per the requirements of the aforesaid texts, namely constructional details.
Antwerp, 12-Sep-2016
(Electronic document)
The plan approval office
See letter: TNDN/6267/MPA/STH

Drawn : AD
Printed: 02-06-2016
Format:
Scale : AD



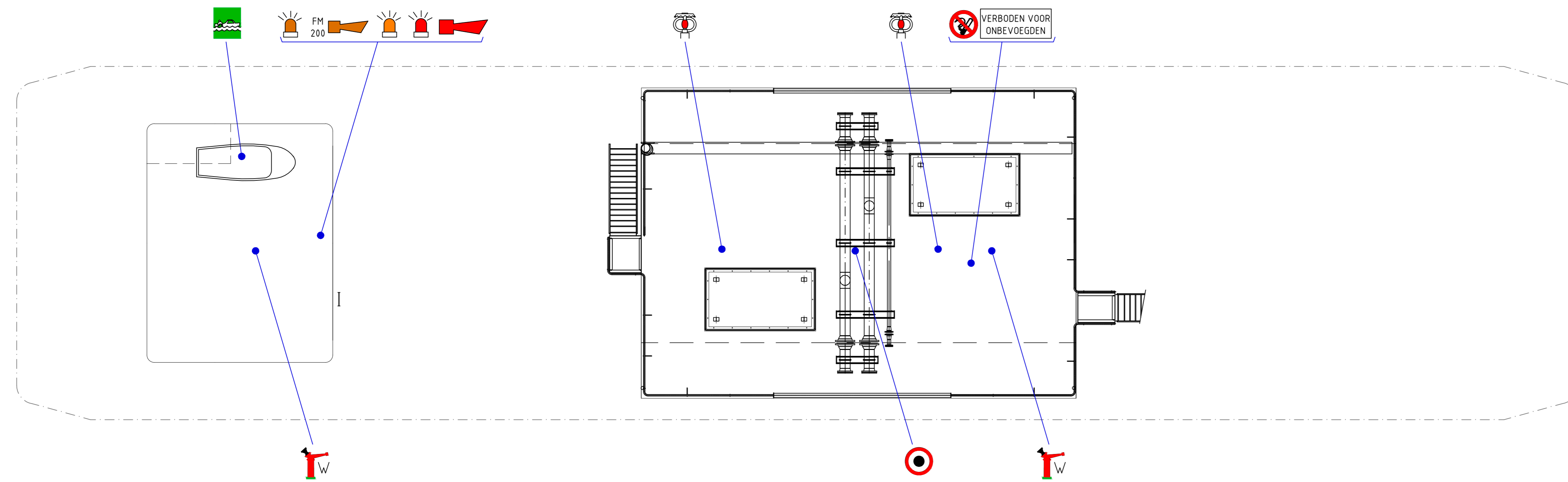
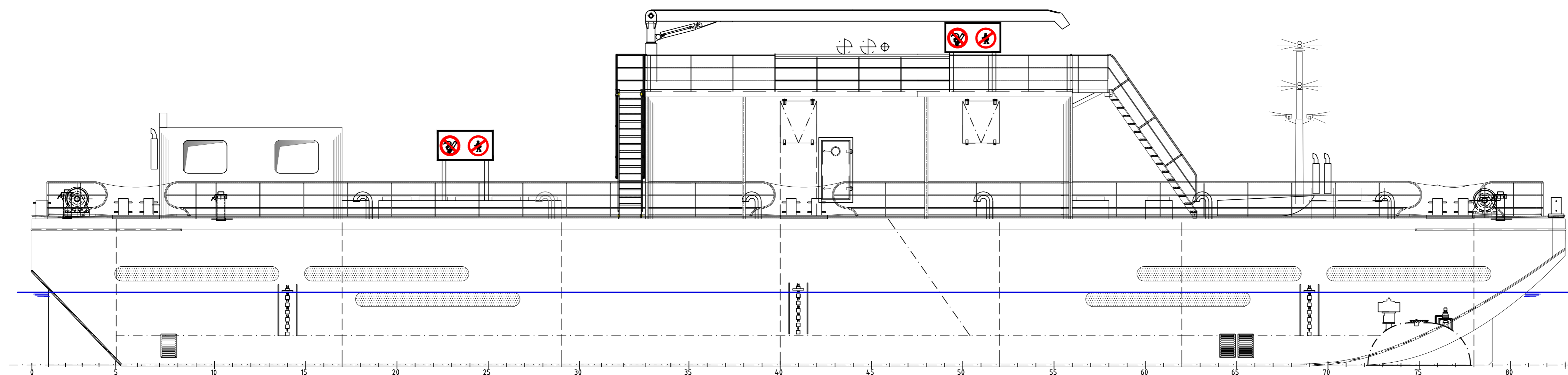
Rev.	Name	Description	Date
A	AD		14-06-2016
B	AD	Inspection UV install	16-06-2016
C	AD	Disconn. Heatingsystem	25-08-2016

Barge Don Quichot
BV 27930L

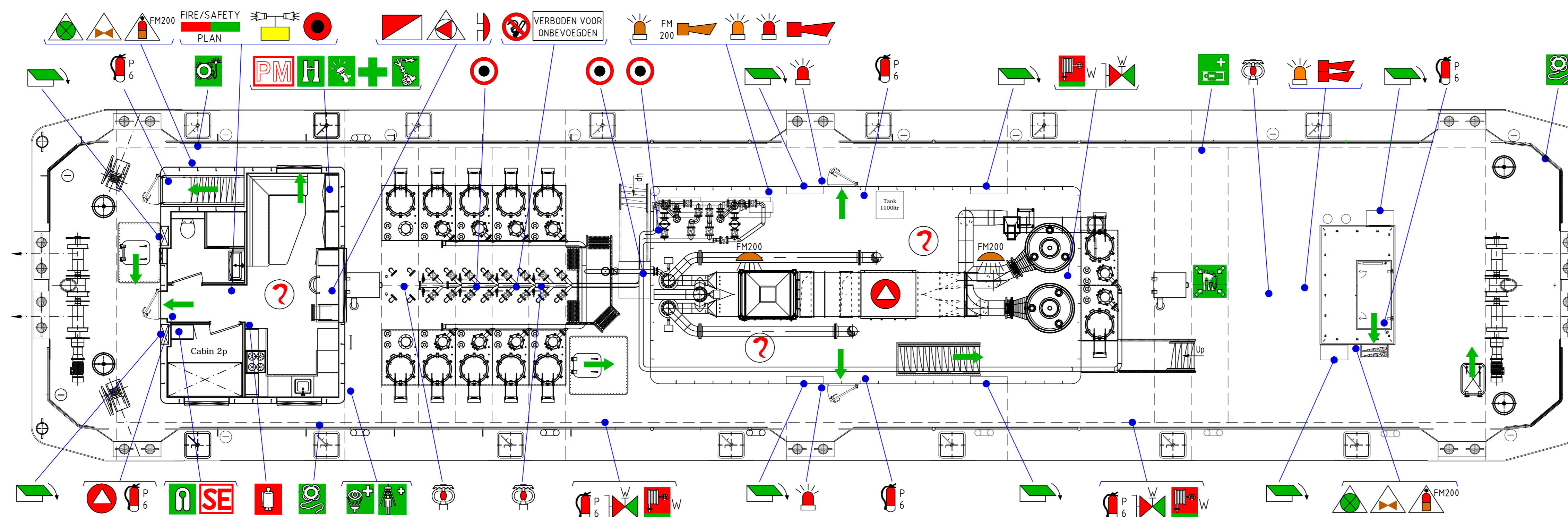
Layout
Cargo Ex Zone

Page 2

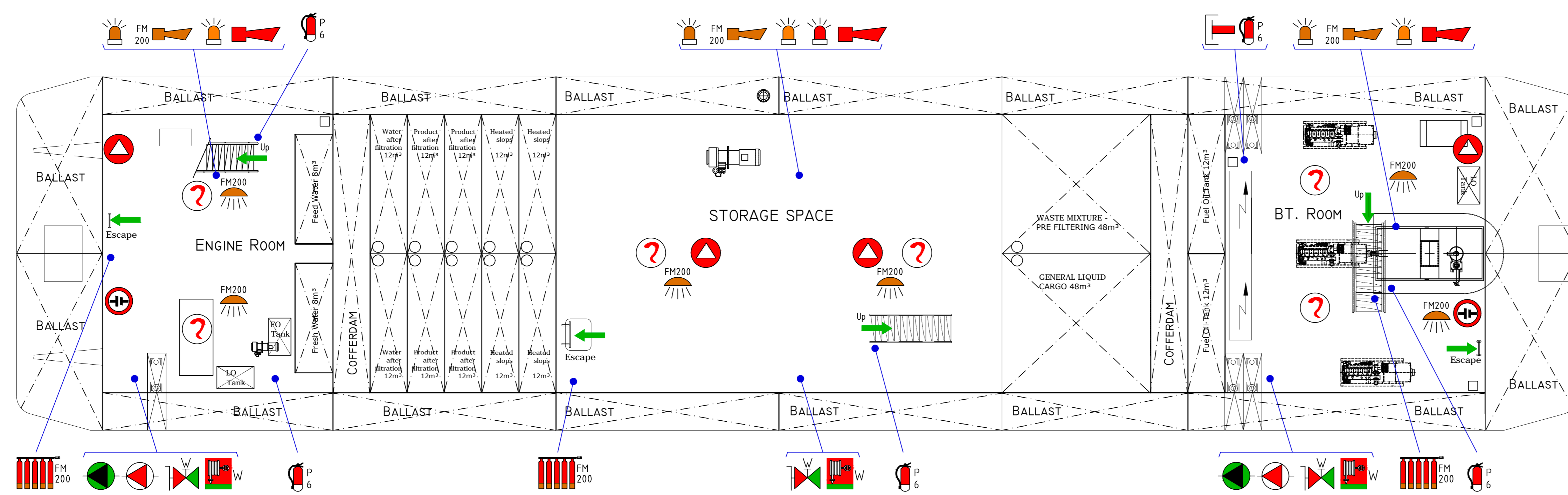
FIRE CONTROL & SAFETY PLAN DON QUICHOT



VIEW AT TOP DECK



VIEW AT DECK



VIEW BELOW DECK

SYMBOL	Nr.	NAME
	1	VEILIGHEIDSPLAN FIRE CONTROL & SAFETY PLAN
	1	DRIJKNOP VOOR ALG./BRANDALARM PUSH-BUTTON FOR GENERAL/FIRE ALARM
	4	NOODSTOP LADINGPOMP EMERGENCY STOP CARGOPUMP
	1	BEL ALGEMEEN/BRANDALARM BELL GENERAL/FIRE ALARM
	5	ZWAAILICHT GAS ALARM SPACE PROTECTED BY GAS ALARM
	6	ZWAAILICHT ALGEMEEN ALARM SPACE PROTECTED BY GENERAL ALARM
	5	ZWAAILICHT FM200 ALARM SPACE PROTECTED BY FM200 ALARM
	1	ROOK-GASMELDPANEEL SMOKE-GAS ALARM PANEL
	5	CLAXON ALGEMEEN/BRANDALARM HORN GENERAL/FIRE ALARM
	5	FM200 ALARM FM200 HORN
	1	BLIJF WEG SIGNAAL GO-AWAY SIGNAL
	8	BRANDKLEP HANDBEDIEND FIRE DAMPER HANDCONTROLLED
	2	AFSTANDBEDIENBARE STOPRIJCHTING VOOR VENTILATIE CENTRAL - REMOTE VENTILATION SHUTOFF
	1	AFSTANDBEDIENING BRANDBLUS-/LENS- EN BALLASTPOMP REMOTE CONTROL FIRE FIGHTING-/BILGE- AND BALLASTPUMP
	5	DOOR SPRINKLER BESCHERMEDE RUIMTE SPACE PROTECTED BY SPRINKLER
	1	AFSTANDBEDIENBARE STOPRIJCHTING VOOR SPRINKLER CENTRAL - CONTROL FOR SPRINKLER SHUTOFF
	2	FM200 BEDIENINGSPLAATS FM200 RELEASE STATION
	3	FM200 CYLINDER FM200 CYLINDER
	6	HOOFDBRAND BLUSLEIDING + BRANDKRANEN FIRE MAIN WITH FIRE VALVES
	6	BRANDSLANGKAST- STRAALPIJP-SPUIJ/NEVEL/SPROEKOOP HOSE BOX WITH SPRAY/JET FIRE NOZZLE
	2	WATER KANON WATER MONITOR
	12	POEDER BLUSSER 6 KG POWDER EXTINGUISHER 6 KG
	2	BRANDBLUS- SPRINKLERPOMP FIRE - SPRINKLERPUMP
	2	LENSPOMP BILGEPUMP
	1	INTERNATIONALE WALAANSLUITING (ELEKTR.) INTERN. SHORE CONNECTION (ELECTR. 200 A)
	8	RUIMTE BESCHERMD DOOR FM200 SPACE PROTECTED BY FM200
	2	S O S AFSLUITERS S O S VALVES
	9	ROOKDETECTOR SMOKE DETECTOR
	6	GASDETECTOR GAS DETECTOR
	1	OPROEPINSTALLATIE (MET LUIDSPREKERS IN ELKE RUIMTE) INTERCOM INSTALLATION (WITH LOADSPEAKERS IN EVERY SPACE)
	2	NOOD ACCU EMERGENCY BATTERY
	16	VLUCHTWEG ESCAPE
	1	RINGDOUCHE MET OOGSPOELING DECONTAMINATION SHOWER WITH EYE WASH
	1	OOGSPOELING EYE WASH
	1	REDDINGSBOEI MET ZELFONTBRENDEND LICHT EN LIJN LIFEBODY WITH LIGHT AND LINE
	2	REDDINGSBOEI MET LIJN LIFEBODY WITH LINE
	1	HULPVERLENINGBOOT RESCUE BOAT
	1	REDDINGSGORDEL (1 VOOR IEDERE OPVARENDE) LIFEJACKET (1 FOR EVERY PASSENGER)
	1	LOOPPLANK L=6 m, Br=0,4 m GANGWAY L=6 m, Br=0,4 m
	1	VERZAMELPLAATS EMBARKATION STATION
	1	MEDICINKAST MEDICAL LOCKER
	2	PORTOFON VOOR GROEPSREDDINGSMIDDELEN SURVIVAL CRAFT PORTABLE RADIO
	1	VERREKIJKER en VEILIGHEIDSLAMP TELESCOPE and SAFETY LAMP
	1	BLUSDEKEN FIRE BLANKET
	1	ADNR KIST MET VEILIGHEIDSUITRUSTING: VEILIGHEIDSBRIJL, GASMASKER, ZAKLANTAARN BESCHERMEDE KLEDING (OVERALL, HANDSCHOENEN & LAARZEN)
	1	ADNR LOCKER WITH SAFETY EQUIPMENT: SAFETY GLASSES, BREATHING APPARATUS SAFETY LAMP, ADDITIONAAL CLOTHING (OVERALL, GLOVES & BOOTS)
	1	KAST MET DRAAGBARE METERS: TEMPERAATUUR, GAS-EXPLOESIE, TOXIE ZUURSTOF-, GAS-ANALYSE
	1	LOCKER WITH PORTABLE METERS: HEAT, GAS-EXPLOSION, TOXIC OXYGEN-, GAS-ANALYSIS
	2	VERBODEN TE ROKEN NO SMOKING
	2	BORD VERBODEN VOOR ONBEVOEGDEN PLATE NO ADMITTANCE FOR UNAUTHORIZED PERSONS
Principal dimensions:		
Length o.a.	42,00 m	
Breadth molded	9,50 m	
Depth molded	4,00 m	
Dr-ough max.	2,00 m	
Class:		
Bureau Veritas	nr: BV27930L	
1.5 IN121 Z		
* Tanker/ADN type C/No propulsion		
DP=57kPa / TP=65kPa/ vacuum 5kPa; sg=1t/m³ 2R • MC		
FIRE CONTROL & SAFETY PLAN		001-B
DEGASIFICATION BARGE		
ScheGro BV		
Uitendacle 4, 3308 LP Zwijndrecht, Holland		
Tel: +31(0)78 684092, Fax: +31(0)78 684021		
SCALE: 1:70	DATE: 29-03-2016	PROJECT: DEGASIFICATION BARGE
DRAWN BY: Fabian	CHECK BY: Schegro BV	PROJECTION METHOD: ORTHOGONAL
DRG. NO: Schegro BV		DRG. SCALE: A0

BUREAU VERITAS Section ...27930L...
Examined within the General Conditions of Marine Branch of BUREAU VERITAS in order to check the compliance with the applicable requirements of BV Rules for Inland Navigation NR217.
European Directive 2006/37/EC.
ADN Rules: ...
All particulars not shown on this document are assumed to be as per the requirements of the aforesaid texts, mainly constructional details.
Antwerp, 01-Aug-2016

(Electronic document)
The plan approval office
See letter: TN/DNI/6180/MPA/NMA/STH