

## **Manipulations on EURO V and VI trucks by suppression of AdBlue injection**

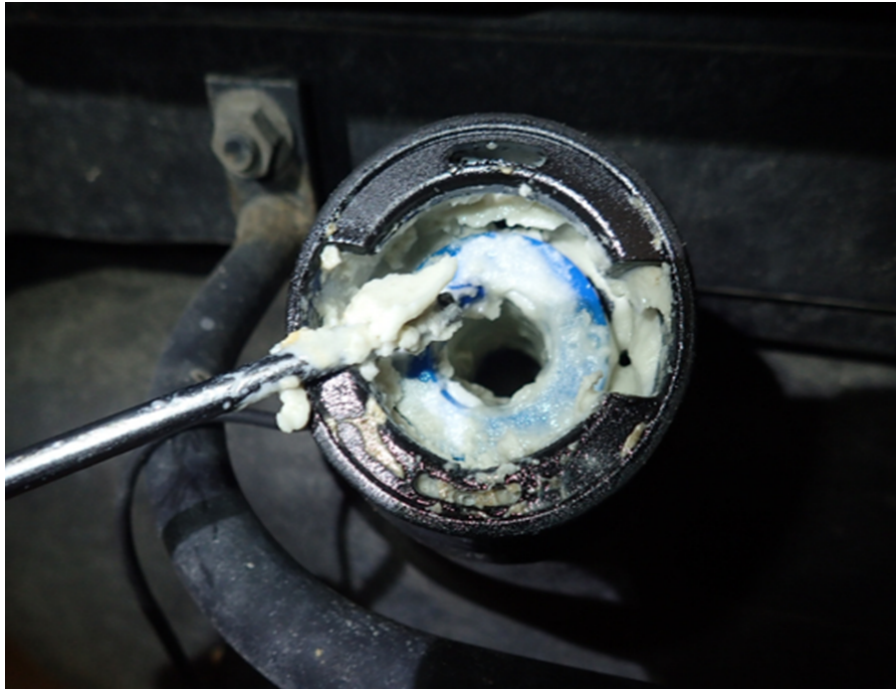
### **Detection of manipulated trucks**

#### **Points to be observed**

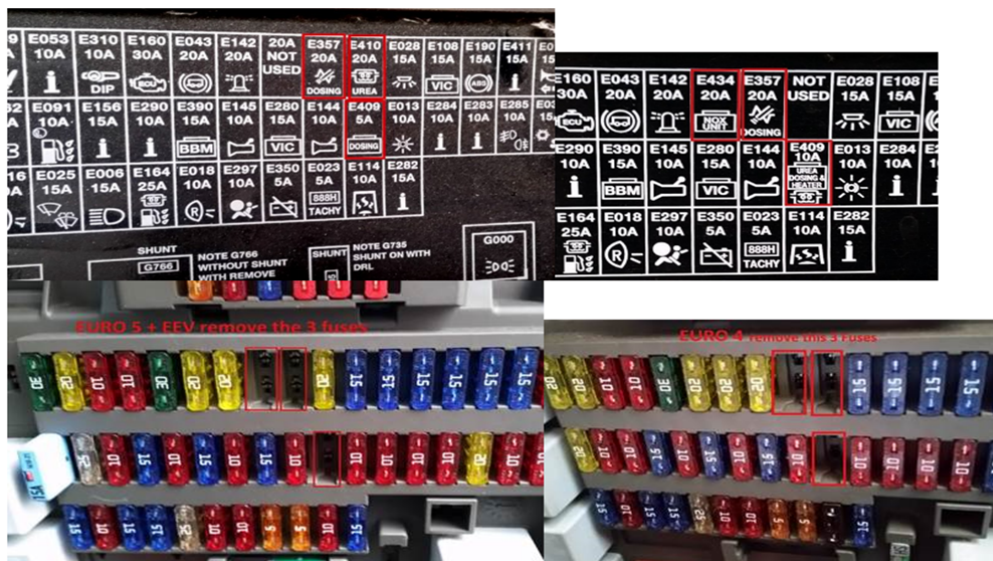
There are several indications which may help to detect a manipulated truck:

- 1. Empty AdBlue tank;**
- 2. The inner part of the AdBlue's tank cap contains a crystalline deposit as well as the filling pipe (evaporation residue when AdBlue tank is not refilled regularly, see 3 fotos below);**

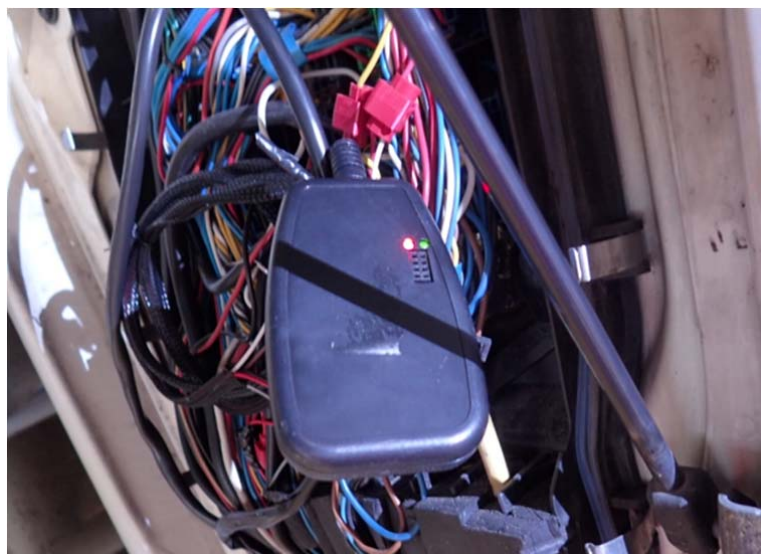
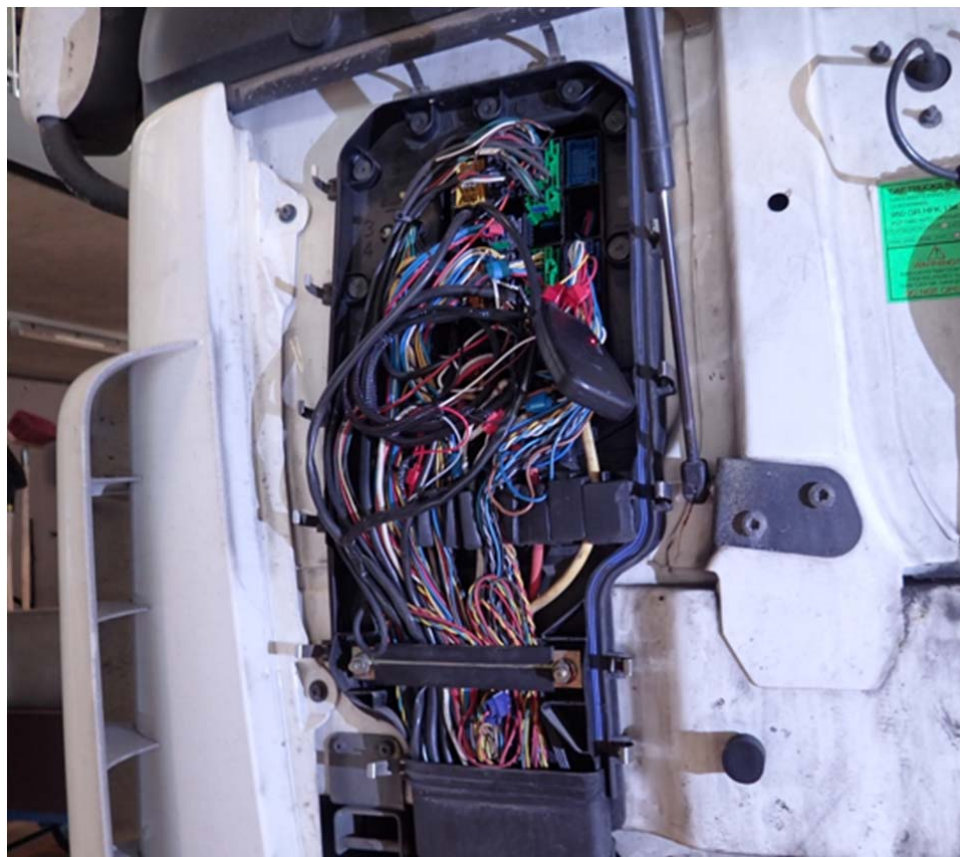




3. The filling level indication located in the dashboard does not coincide with the filling level in the AdBlue tank. In manipulated trucks the filling level indication shows quite often  $\frac{1}{4}$ ,  $\frac{1}{2}$ ,  $\frac{3}{4}$ , or full;
4. The temperature display of the ambient temperature in the dashboard shows  $-12^{\circ}\text{C}$  or less;
5. The exhaust system of the vehicle is sooted;
6. Missing fuses in the fuse box (see foto below);



7. **Non-original wiring, cables or hardware** (see 2 fotos below);



8. **Disconnected or modified connectors/connection assemblies at the AdBlue control unit/injection unit** (see foto below);



9. **Hidden switch for reactivation of AdBlue injection, needed in countries with stringent vehicle controls;**
10. **The driver is not able to present sales receipts for AdBlue refillment.**

**Conclusion**

There is strong evidence of a manipulated truck when a cumulation of such irregularities takes place.