

Committee of Experts on the Transport of Dangerous Goods and on the Globally Harmonized System of Classification and Labelling of Chemicals

**Sub-Committee of Experts on the Globally Harmonized
System of Classification and Labelling of Chemicals**

6 December 2018

Thirty-sixth session

Geneva, 5-7 December 2018

Item 3 (b) of the provisional agenda

**Classification criteria and related hazard communication:
review of Chapter 2.1**

Review of Chapter 2.1 – amended and commented criteria flowcharts after ICG-meetings in November/December 2018

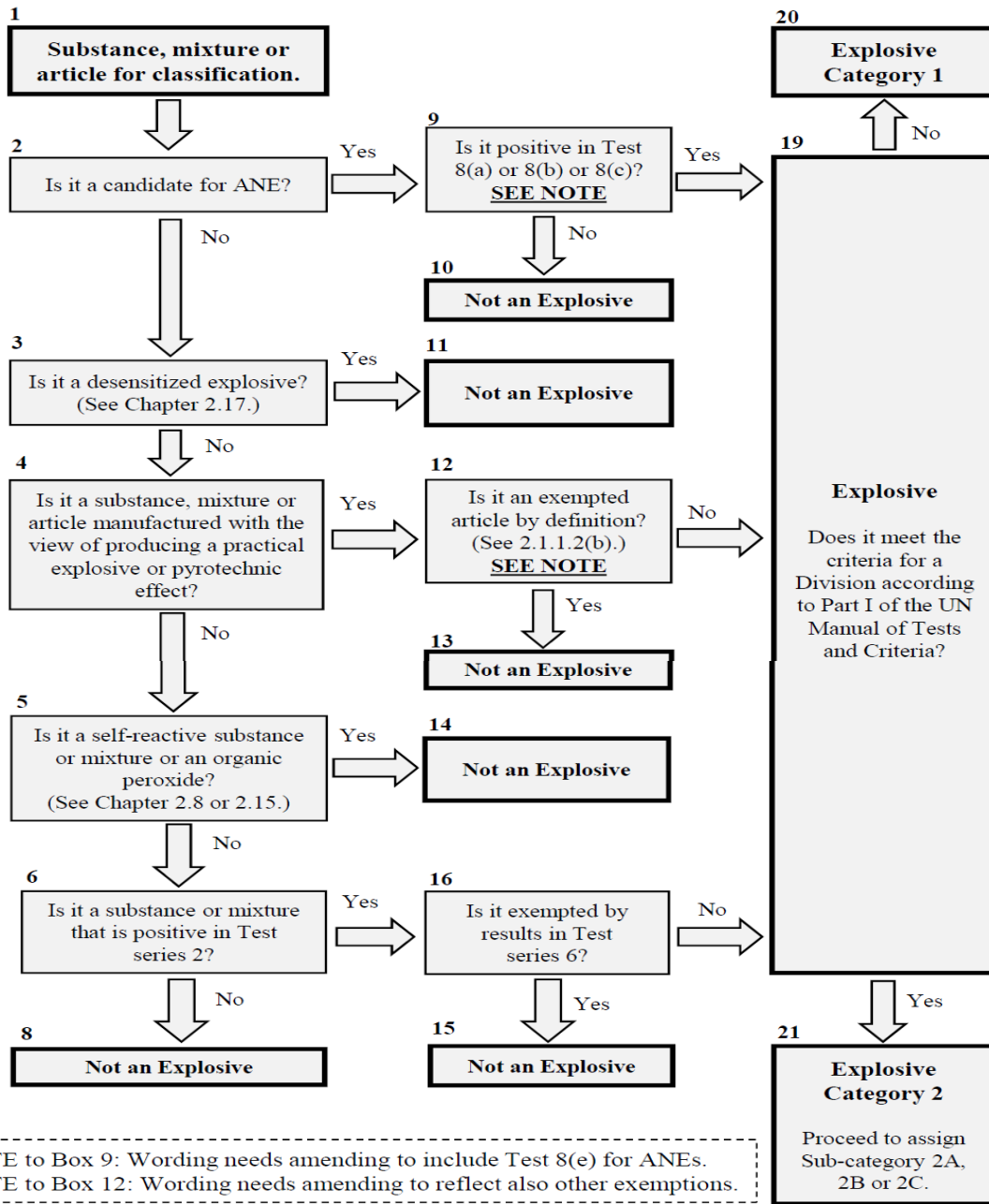
Transmitted by the expert from Sweden

1. At the joint meeting of the Informal Correspondence Group on the review of Chapter 2.1 (ICG) and the Working Group on Explosive (EWG) on 29 November 2018, the flowcharts of Annex 1 in WD20 (SCEGHS)/85 (SCETDG) and Annex 1 of INF.10 (SCEGHS)/INF.13 (SCETDG) were slightly amended and commented. These amendments and comments are reflected in paragraph 10 of the report from the EWG in INF.50 to the SCETDG (and reproduced in INF.34 of the SCEGHS).

2. The slightly revised flowcharts formed the basis for the ICG-meeting on 5 December 2018 and were shown to the SCEGHS in plenary when the expert from Sweden reported back from that meeting on 6 December 2018. To facilitate future discussion, these flowcharts are reproduced as Annex 1 and 2 to this document, respectively. The notes in Box 9 and 12 in the flowchart of Annex 1 serve as a reminder and are not to be included in the boxes. Box 7, 17 and 18 of this flowchart are missing as they have been removed. In the flowchart of Annex 2, “primary packaging” has been replaced by “immediate container” in Box 4. See INF.34 (SCEGHS) or INF.50 (SCETDG) for detailed explanations on these amendments.

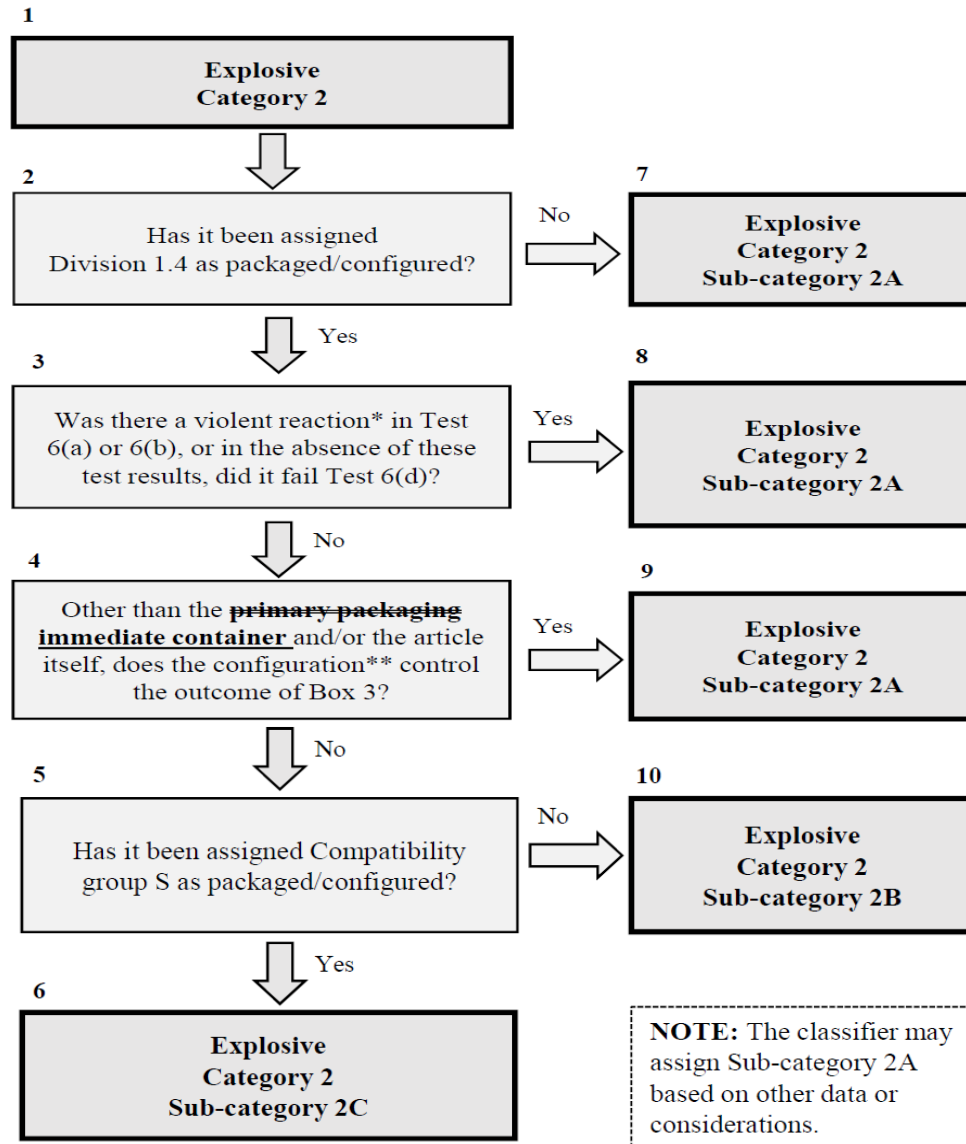
Annex 1

Criteria-flowchart for the scope of the hazard class Explosives, as amended/commented by the EWG on 29 November 2018



Annex 2

Criteria-flowchart for Sub-categories 2A-C within Category 2 for Explosives, as amended/commented by the EWG on 29 November 2018



* Violent reaction is defined as:

- 1) Significant change of witness plate shape; and/or
- 2) Instantaneous scattering of most of the confining material.

** Configuration means the complete package and explosive as tested according to the UNMTC, including special orientation for cancellation of explosive effects.