



Long term vision RIS

De Vlaamse Waterweg



Editie 2018

TEAM RIS

RIS

- Harmonized "River Information Services" to support inland navigation and transport management, including the connection to other transport options

- The RIS cell aims to contribute to a safe, reliable, efficient and smart transport process and to use the inland waterway with limited impact on the environment by offering information and services to ...

GOAL



Industry



Skippers

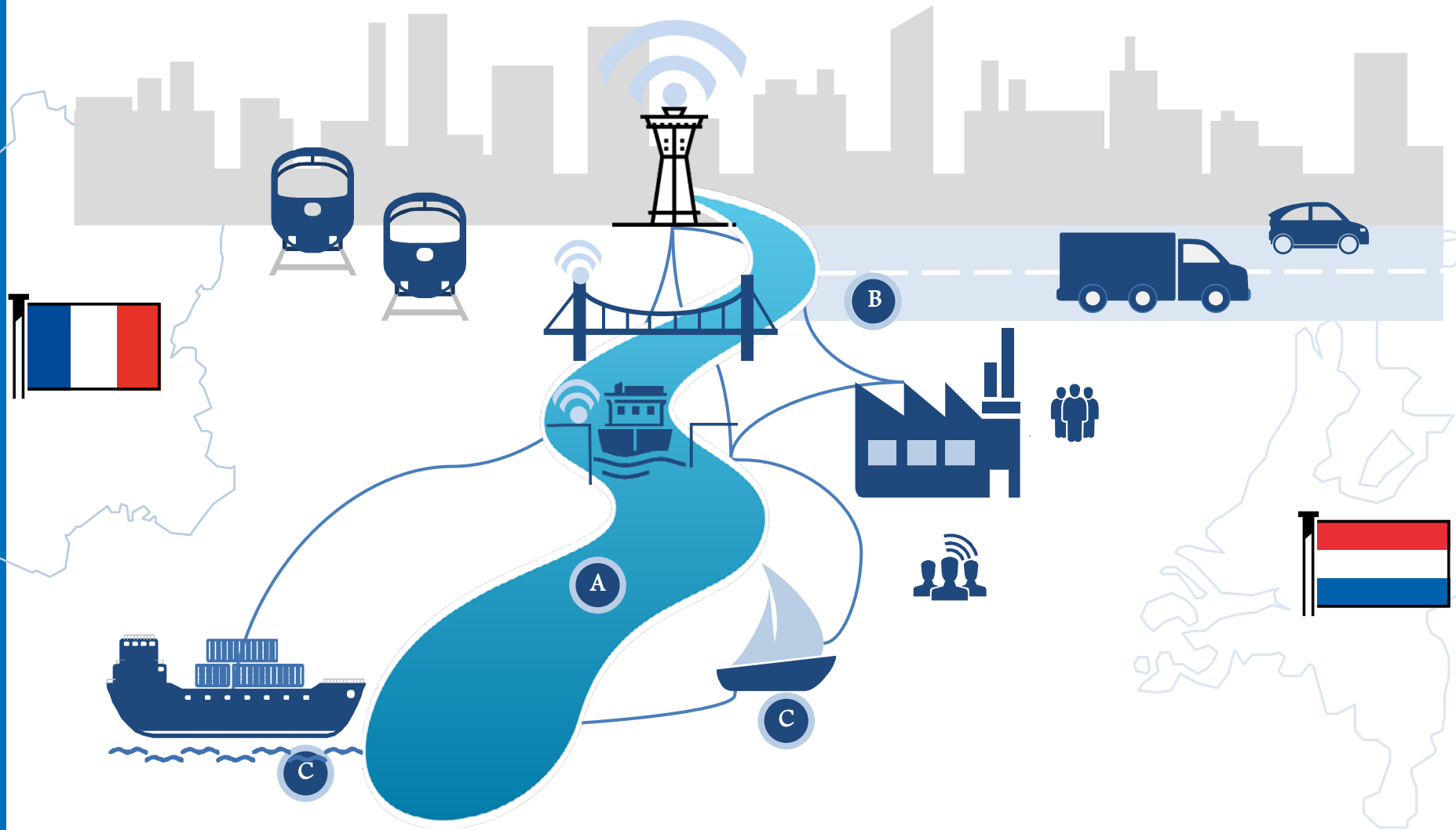


Governments



Other departments of
De Vlaamse Waterweg
nv

The logistics landscape

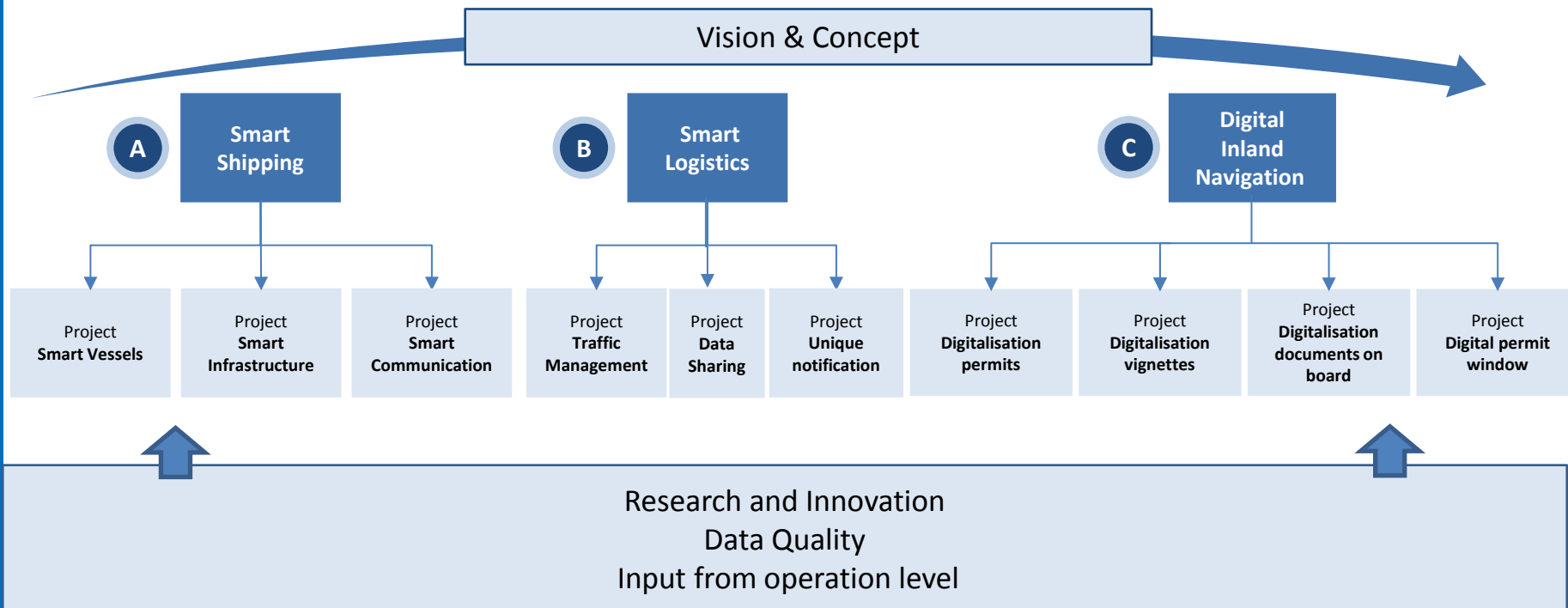


Long term vision RIS

A reliable, safe, efficient and smart waterway network also means stimulating innovation in hydraulic engineering and shipping



Via 3 innovation programs



Smart Shipping

Smart Vessel

- Defining **test area** on Flemish waterways
- Bring **stakeholders** together
- **Gap identification research**
- Adapting **law and regulations**
- **International cooperation (PIANC WG 210)**

Smart Infrastructure

- Up to date and **reliable data stream** concerning **infrastructuur**
- Research on adaptation of **land based infrastructure**

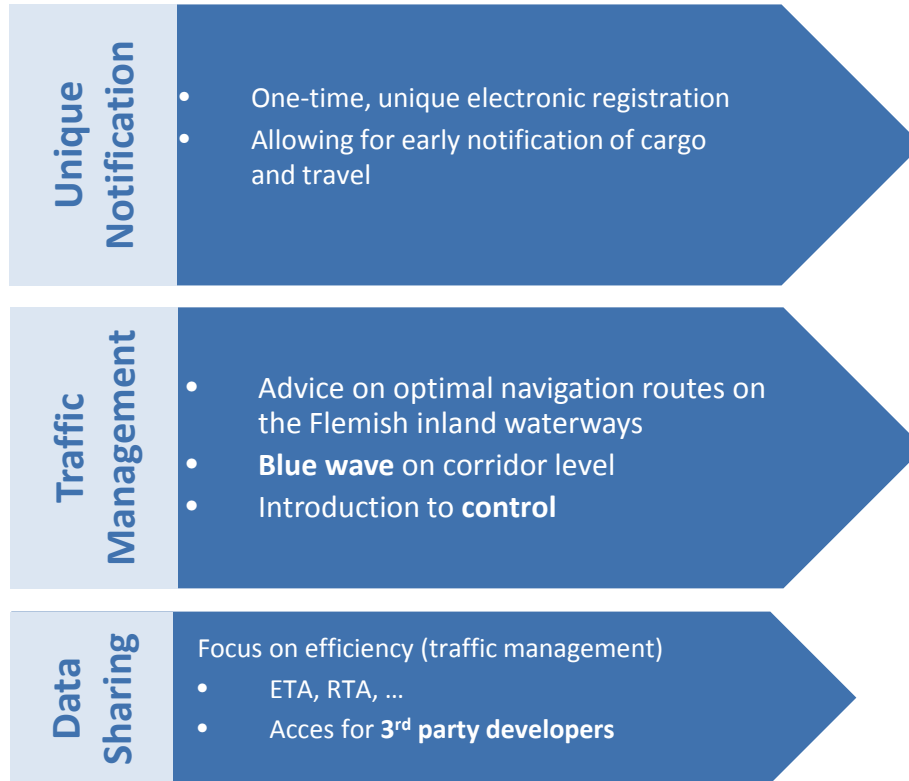
Smart Communication

- Focus on **safety**:
- Sharing data that supports navigation (f.ex. Inland ECDIS maps, ...)
 - Increasing tactical information (f.ex. state of infrastructure, traffic density, ...)

A

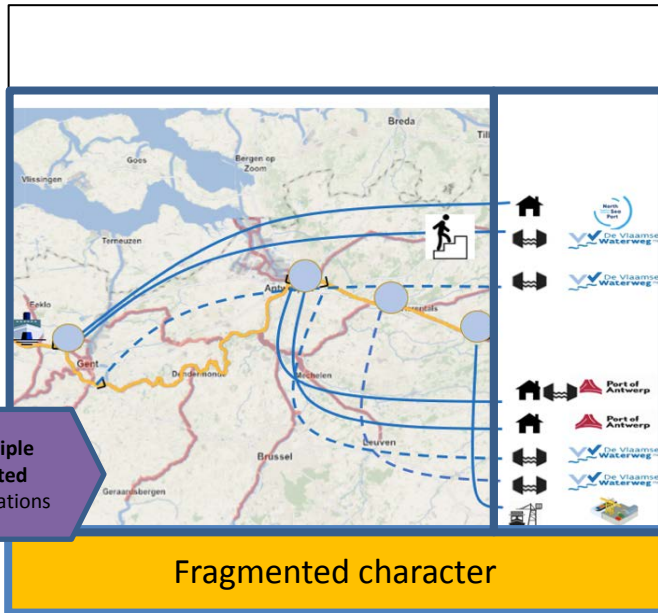


Smart Logistics



Unique Notification

AS IS situation



Multiple limited notifications

Fragmented character

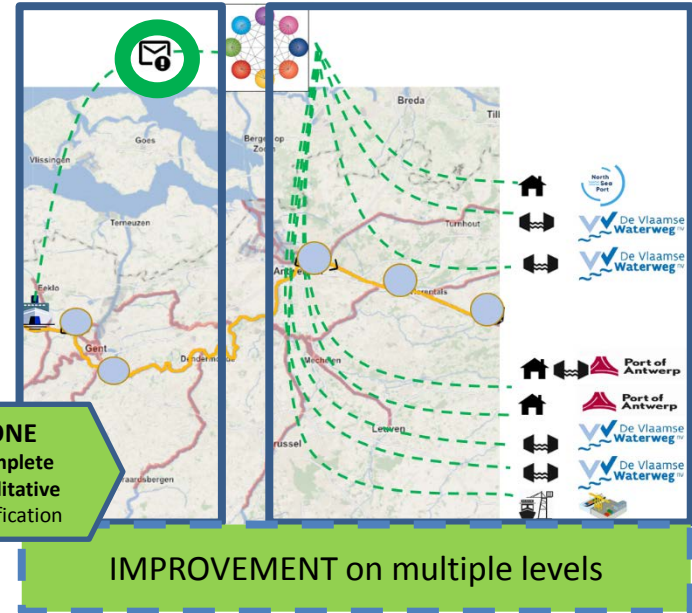
Seperate registration in own system

Limited data exchange with public parties

Own registration method/process

Limited transparency towards private parties

TO BE situation



ONE complete qualitative notification

IMPROVEMENT on multiple levels

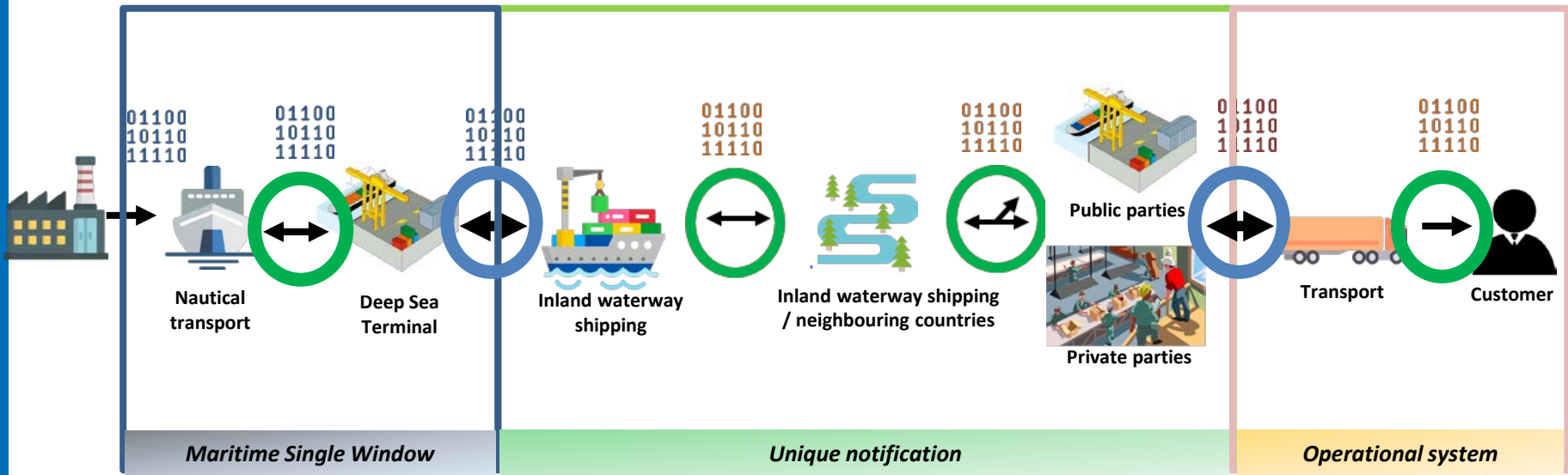
STAKEHOLDER

LOCAL

EU

CHAIN

Unique Notification



Digital Inland Navigation

Digitalisation permits and vignettes

- For commercial shipping & pleasure craft

Digitalisation documents on board

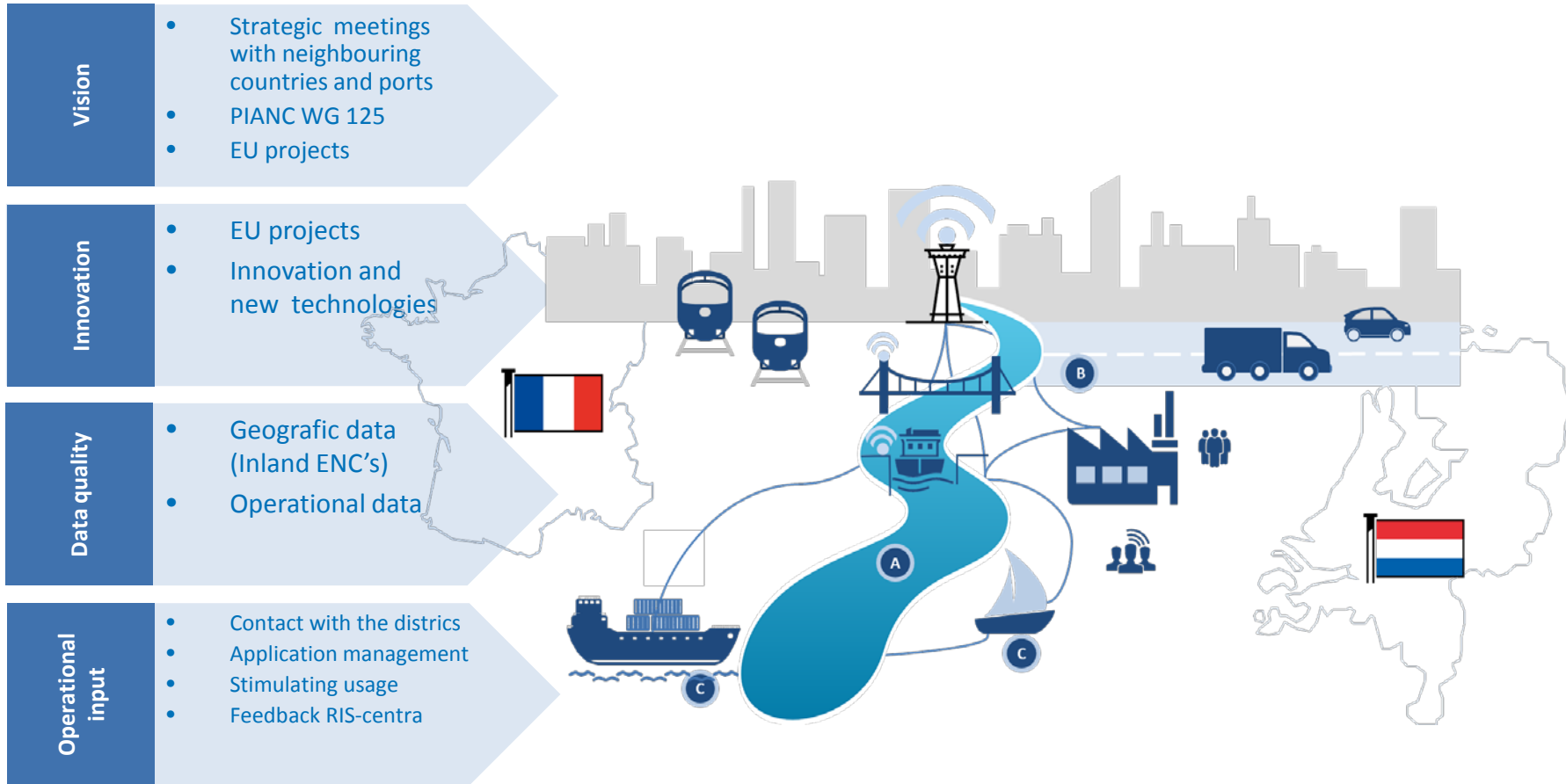
- **Digitalisation** other documents on board
- commercial shipping & pleasure craft
- Static (eg. Ship tonnage certificate) & dynamic documents (eg. seafarer's discharge book)

Digital window

- **One window** for inland shipping
- Roll out existing **payment platform** to other applications, eg. shore side electricity



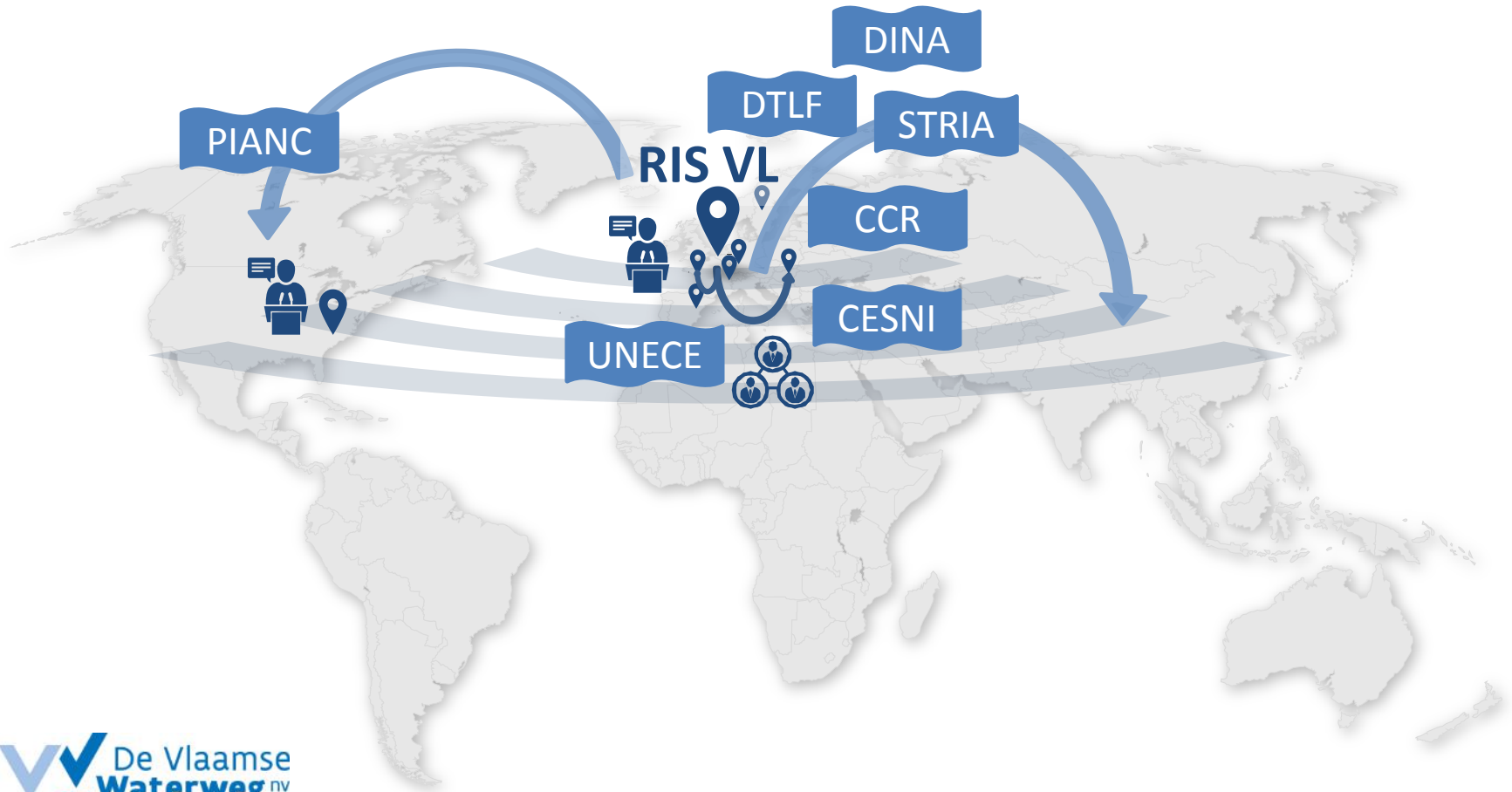
Vision innovation, data quality and operational input



International representation

Continuous improvement through concept and vision development at international level

Communicate and getting feedback



Values

Creating transparency and attracting customers through offering a safe, reliable, efficient and smart waterway network

Safe

- ✓ Standards
- ✓ Harmonisation
- ✓ Good communication

Reliable

- ✓ Reliable data and applications
- ✓ Qualitative data
- ✓ Real-time information

Efficient

- ✓ Administrative simplification
- ✓ Traffic management
- ✓ Reduction of waiting times
- ✓ Blue wave principle

Smart

- ✓ Autonomous navigation
- ✓ Artificial intelligence
- ✓ Optimisation planning