

# Iceland

## The importance of transport in an era of climate change

Ásta Þorleifsdóttir Ministry of Transport

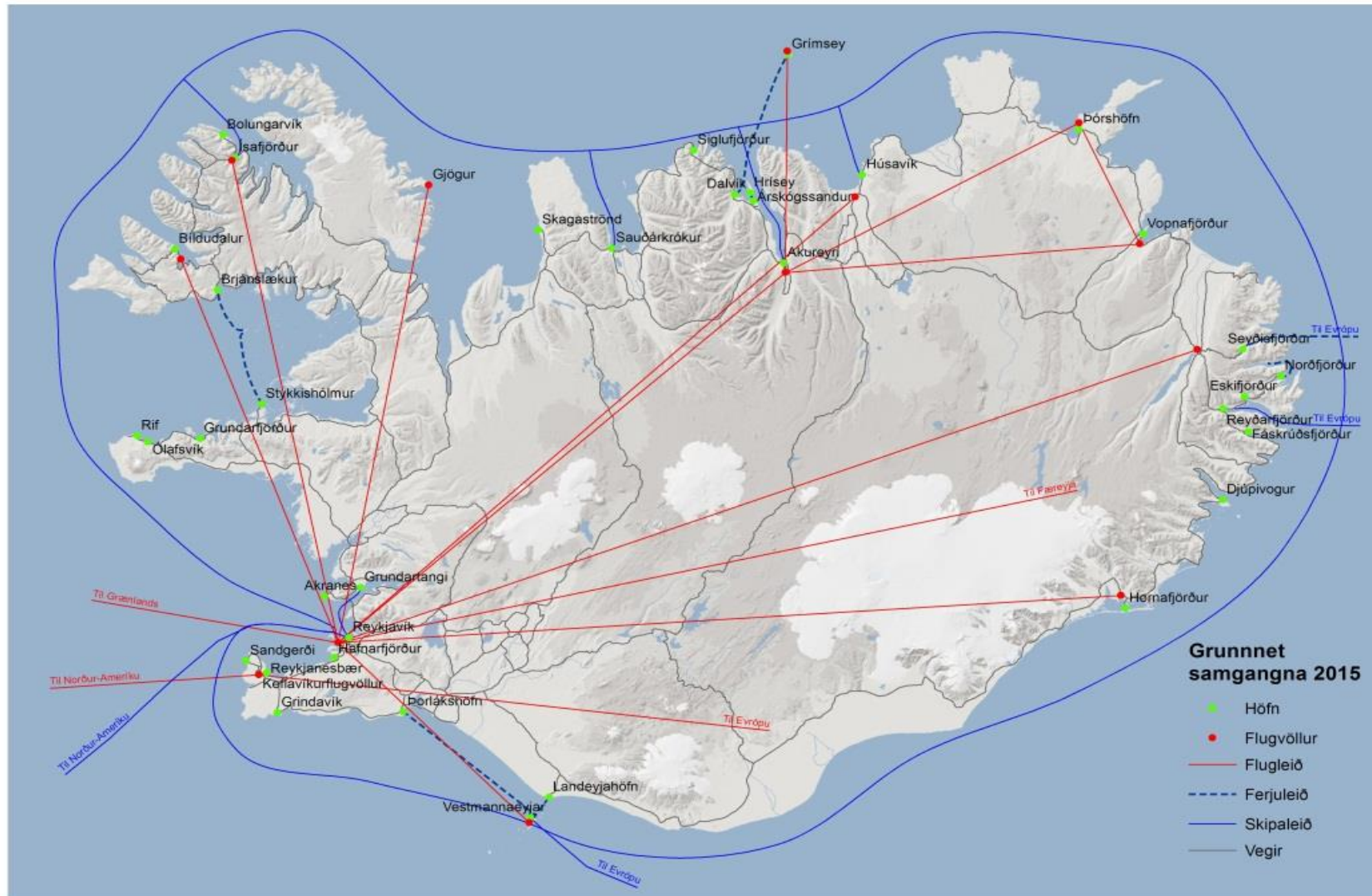
[Asta.thorleifsdottir@srn.is](mailto:Asta.thorleifsdottir@srn.is)

# Response- Mitigate

## Adapting design and construction

- So far in Response to climate change
- Building an adaptive strategy for
  - Isostatic changes
  - Sealevel changes
  - Extreme weather events

# Critical infrastructure- Core network



The Population is concentrated in the SW and coastal areas

Climate change is very, very visible  
Our glaciers are melting at an ever increasing speed



1904

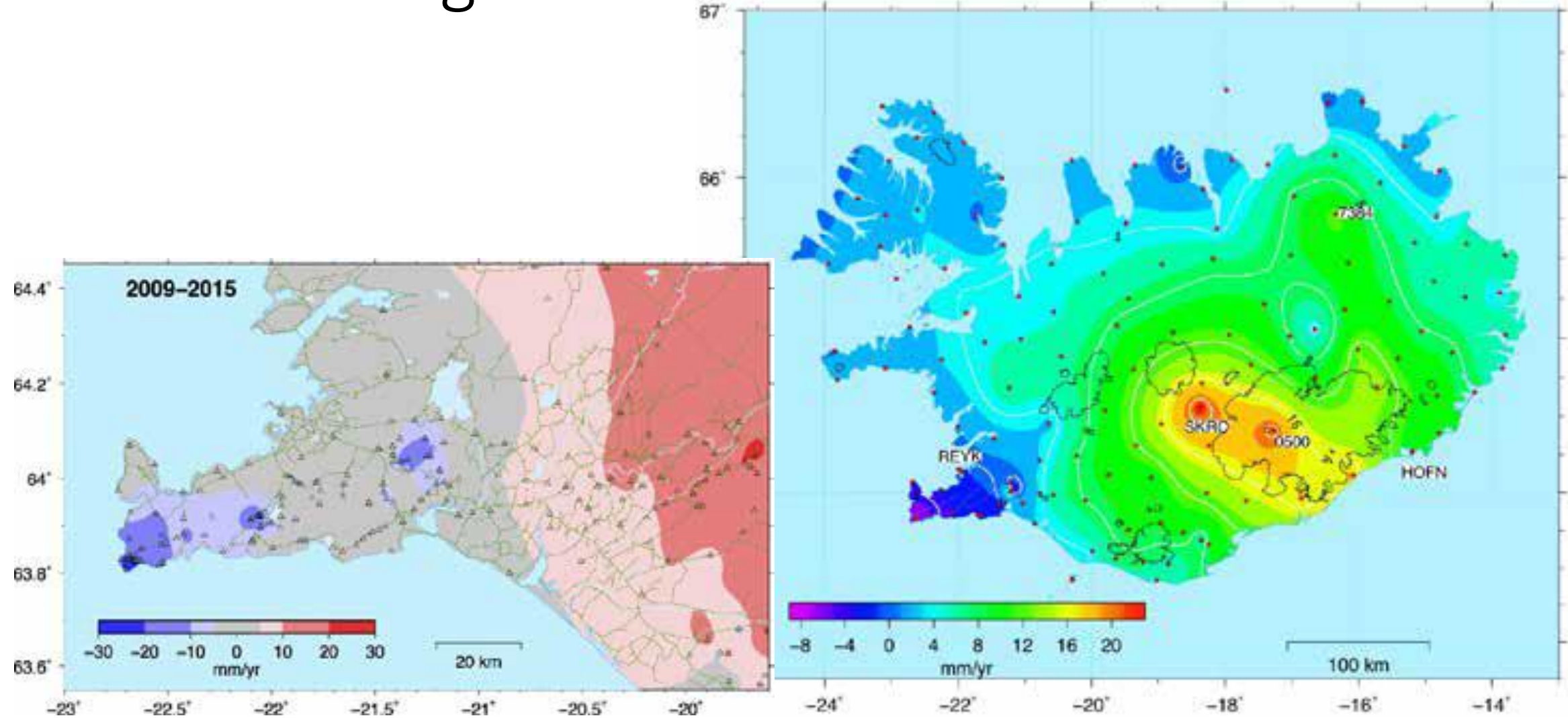


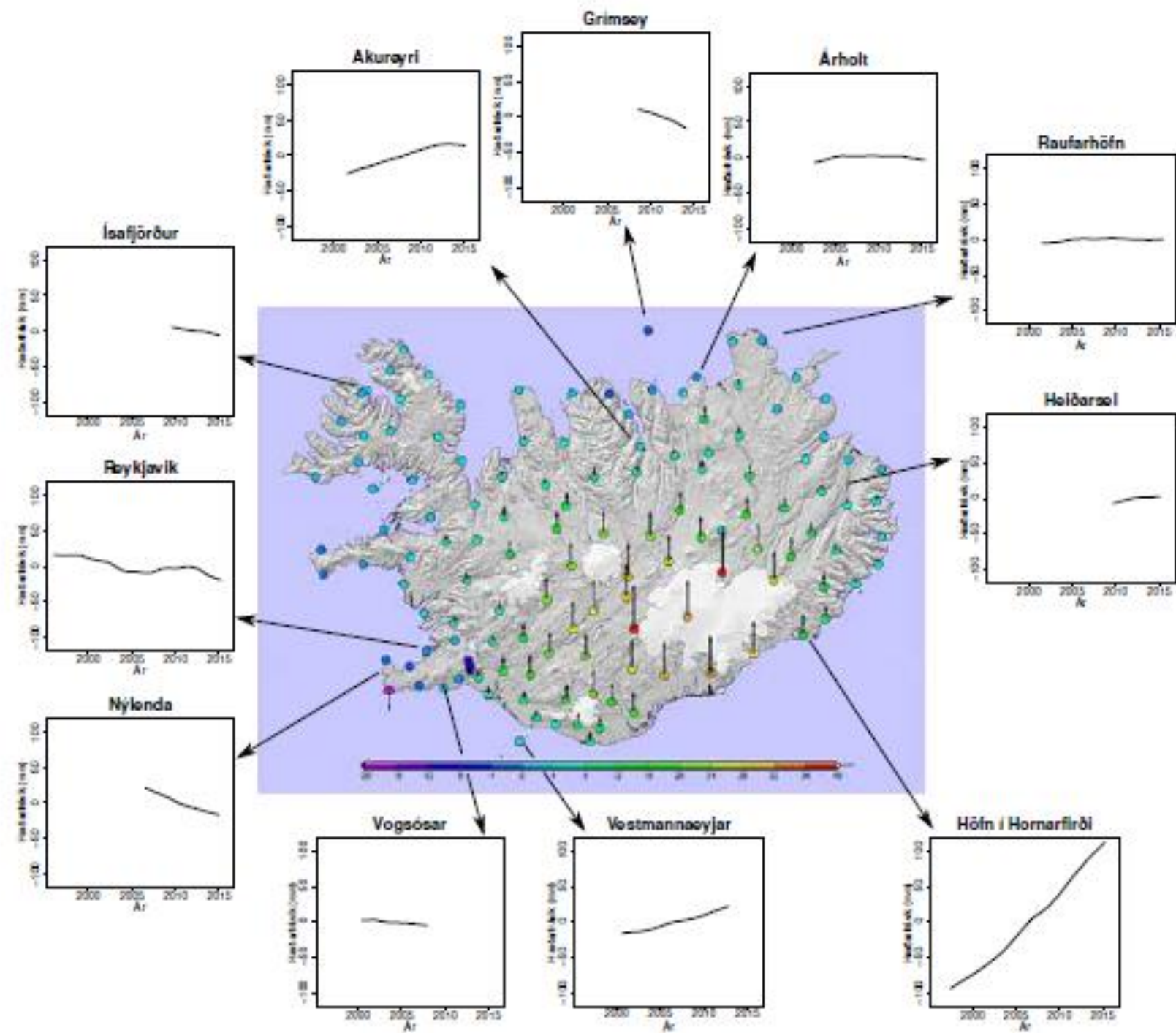
2016

# Loosing glaciers

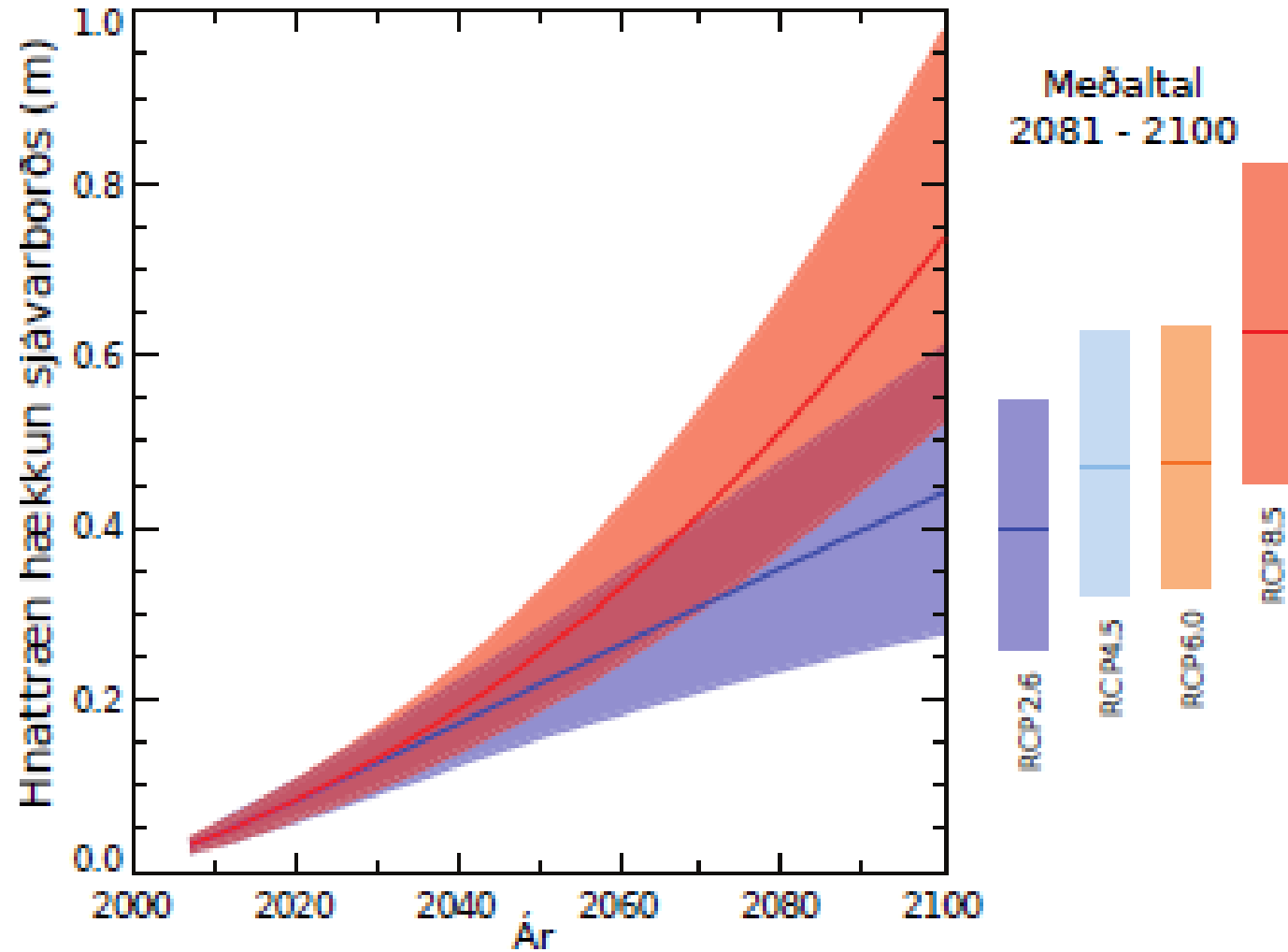


# Isostatic changes – subsiding / rising





# Sealevel change





# Extreme weather events



# Extreme weather: Precipitation 100mm+



