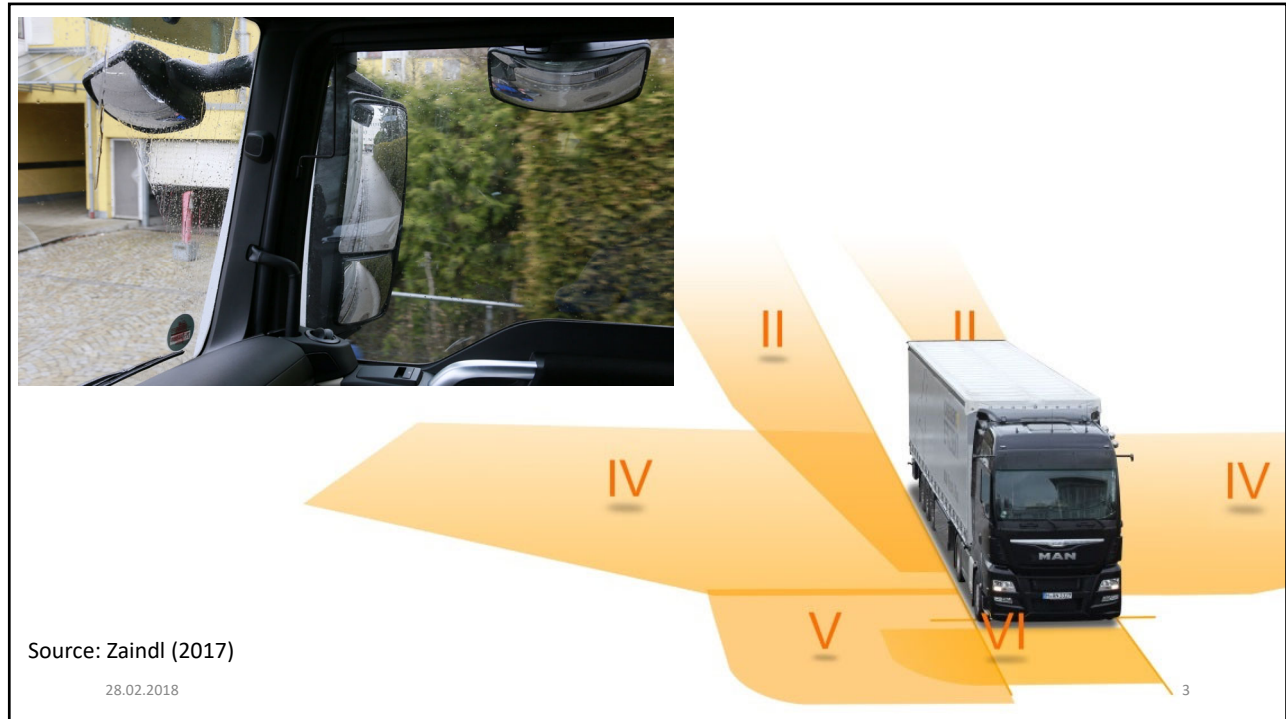


Informal document GRSG-116-37
(116th GRSG, 1-5 April 2019
Agenda item 7(a))

UN Regulation No. 46: Default view and temporary modified view

Why temporary modified view?

- Fields of vision arise from classic mirrors physics
- improvements in safety can be achieved by image processing (if temporary modified views are allowed)
- Temporary modification could mean a change in:
 - Field of view
 - Magnification
 - Resolution
- Examples will be stated below, but are not complete
 - Classic Approach – Imitation of mirrors
 - Panning to imitate Head movement
 - New Approach – combining fields of view
 - Change in Magnification factor to improve Nearfield-vision



Class II – Panning (Change of field of view)



Image without panning function

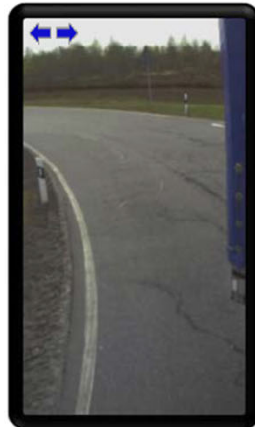
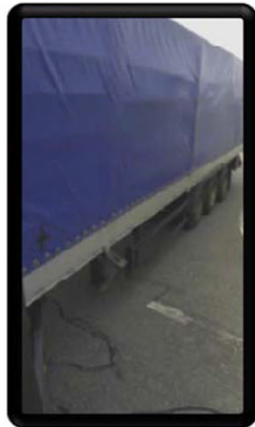
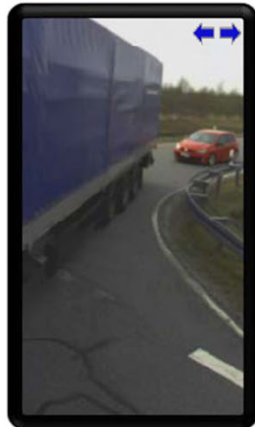


Image with panning function



Class II – Panning (Change of field of view)



Source: Youtube

02.04.2019

5

Class II – Panning (Change of field of view)



Source: Youtube

02.04.2019

6

Class II – Panning (Change of field of view)



Source: Youtube

02.04.2019

7

Combined Image



Modified view

Source: Zaindl (2017)

02.04.2019

8

Default view

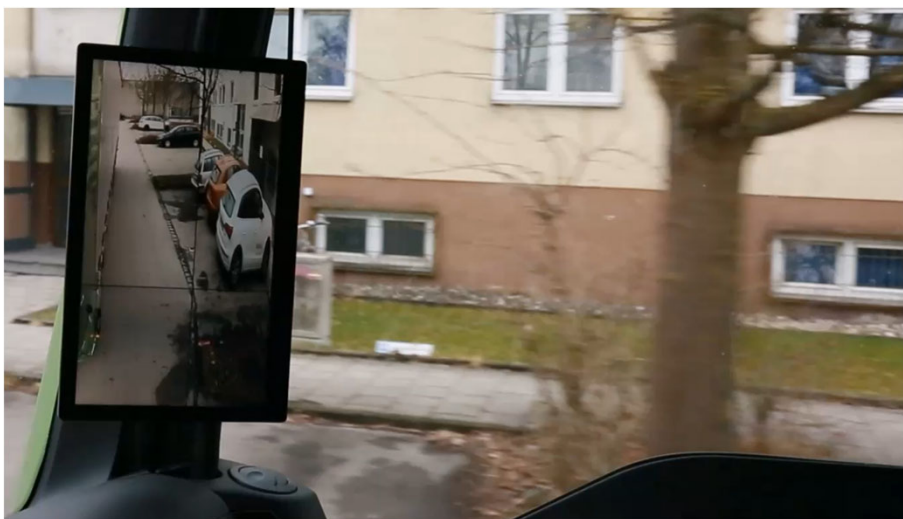


Source: Youtube

02.04.2019

9

Example of change into modified view



Source: Youtube

02.04.2019

10

Comparison default view – modified view



Change of
Magnification and
Resolution

Source: Zaindl (2017)

02.04.2019

11

Sources:

- Zaindl (2017), Dissertation
 - <https://mediatum.ub.tum.de/doc/1355826/1355826.pdf>
 - <https://www.youtube.com/watch?v=YH89JcG6ta8>
- Stoneridge
 - <https://www.youtube.com/watch?v=pjHpQWPGgaU>
- Daimler Trucks
 - <https://www.youtube.com/watch?v=EmyENs0Ea-E>

02.04.2019

12