



Launching the Decade of Action for Road Safety in the UNECE Region

Road safety management
and implementation capacity

Belgrade, 28 April 2011

Jens Hügel
Head – Sustainable Development





This is the IRU





Evolution of IRU Membership

**Created
1948**

**National Associations
from 8 founding countries**



Belgium



Denmark



France



Netherlands



Norway



Sweden



UK

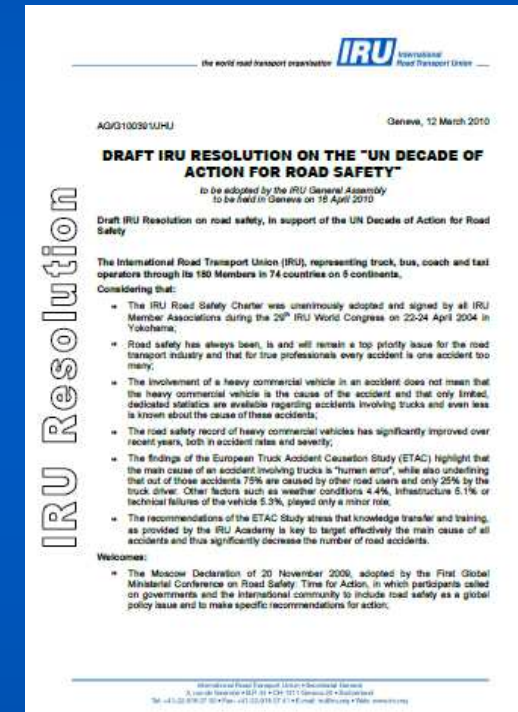
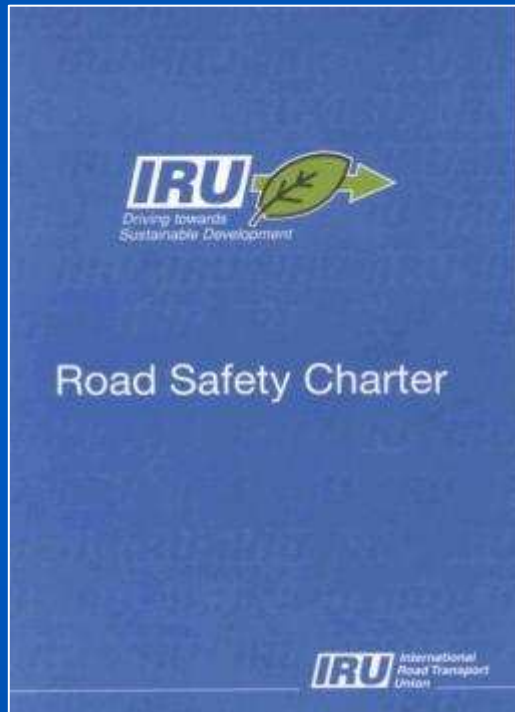


Switzerland

**2011
180 Members
74 Countries**



The Commitment Road Safety – Highest Priority



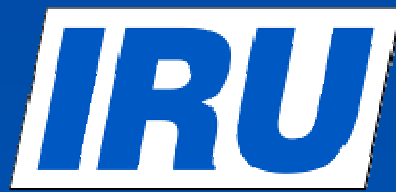


Road Safety – Specific Strategy

**The IRU supports all measures that
improve road safety**

if

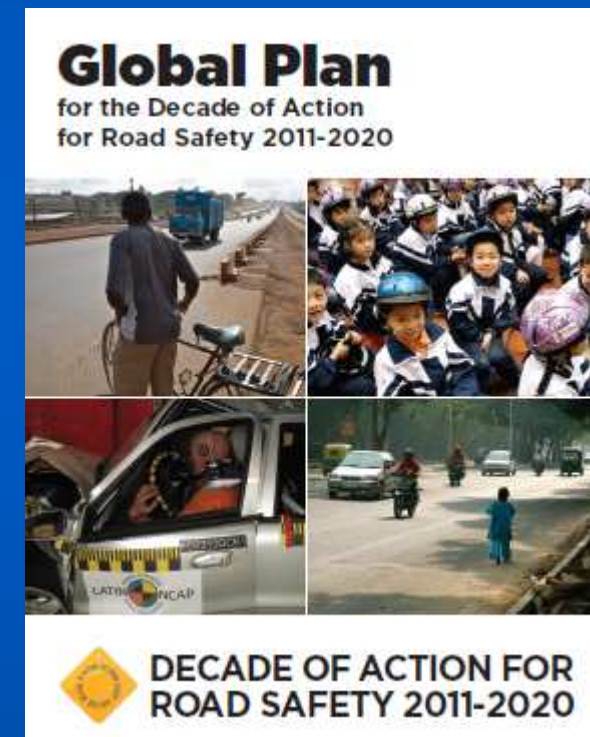
**they effectively target the main causes
of accidents involving trucks.**



UN Decade of Action for Road Safety IRU Action for the Decade

United Nations Road Safety Collaboration

1. Identify the main cause of accidents involving trucks.
2. Promote effective, harmonised and internationally recognised standards for training of road transport professionals as provided by the IRU Academy.
3. Work together with the business community to improve road safety.





Accident Analysis ETAC – A Scientific Study





Main Cause: The Human Factor

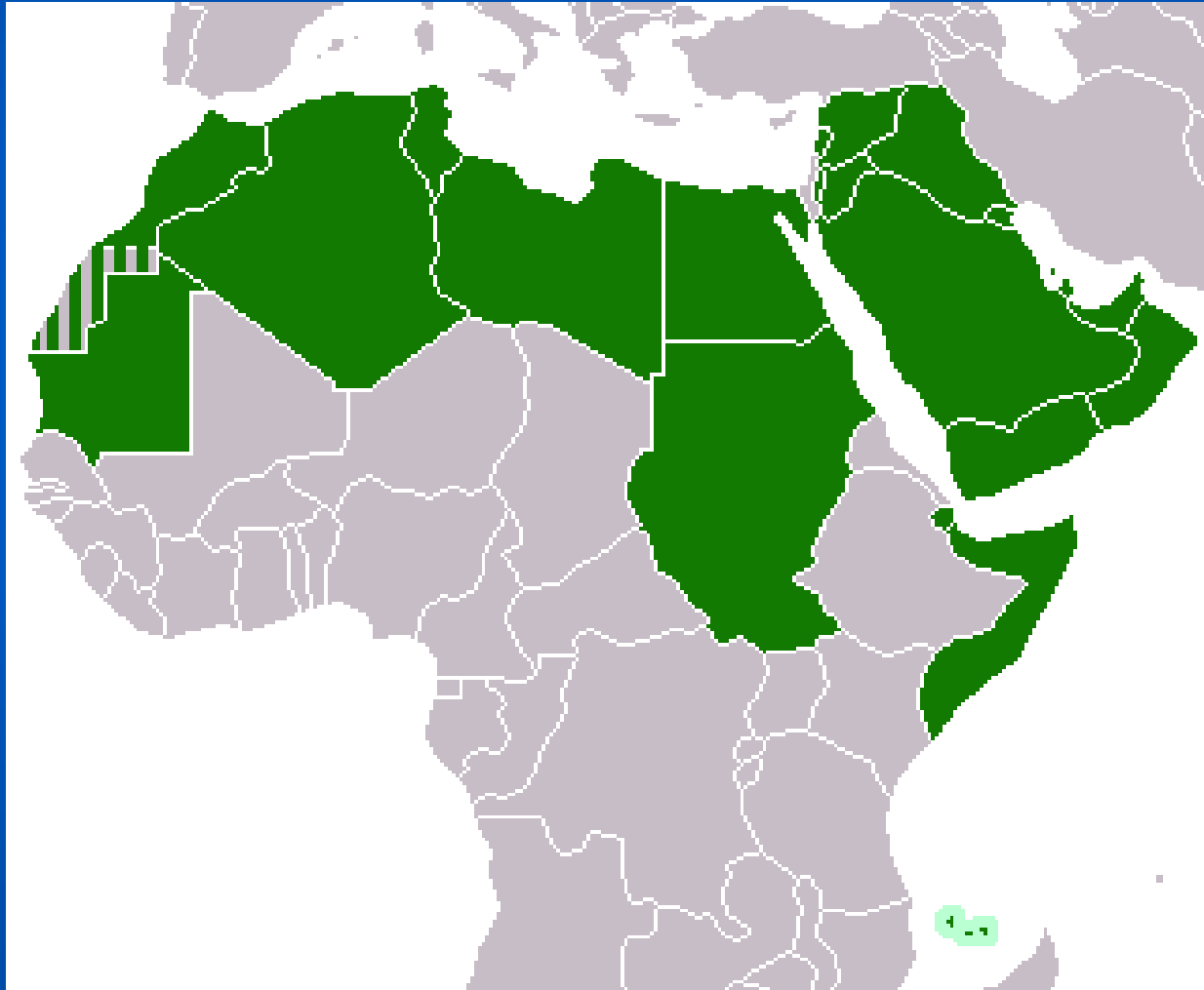


**Key recommendation:
Training – Training – Training!**

However, from the 85.2% linked to human error, 75% were caused by other road users!



New! LASTAC Study



The logo for IRU Academy, featuring the letters 'IRU' in a bold, blue, sans-serif font inside a white rectangular box with a blue border. Below the box, the word 'Academy' is written in a white, italicized, serif font.

IRU

Academy

A group of seven silhouettes of business professionals in suits, standing in a line against a glowing blue globe background. The silhouettes are dark against the bright blue light of the globe. One woman in the center is shaking hands with a man next to her.

**Addressing the human
element in road safety**



IRU Driver's Safety Cards

Lista de comprobación para conductores de autocar

Los conductores profesionales que desempeñan su actividad profesional en el transporte de viajeros deben cumplir con un alto nivel de seguridad, tanto en el vehículo como en el conductor. El IRU ha desarrollado esta lista de comprobación para conductores de autocar para garantizar la seguridad de todos los viajeros.

¿ESTA PREPARADO?

¿Está el vehículo en condiciones de uso? ¿Está el conductor en condiciones de conducir? ¿Está el vehículo en condiciones de uso? ¿Está el conductor en condiciones de conducir? ¿Está el vehículo en condiciones de uso? ¿Está el conductor en condiciones de conducir?

¿ESTA LISTO TODO LO DEMÁS?

¿Está el conductor en condiciones de conducir? ¿Está el vehículo en condiciones de uso? ¿Está el conductor en condiciones de conducir? ¿Está el vehículo en condiciones de uso? ¿Está el conductor en condiciones de conducir? ¿Está el vehículo en condiciones de uso?

SAFE LOADING AND CARGO SECURING CHECKLIST
Stay safe and compliant!

Careful loading and securing of goods on road freight vehicles is essential to ensuring safe road transport. It is therefore important that the securing of cargo on a vehicle is carried out according to adequate standards, and without violating national requirements. In order to improve road safety, the IRU has developed this checklist of fundamental tips for safe loading and cargo securing.

BEFORE LOADING CARGO ON A VEHICLE

- Remove the right wheels for the vehicle.
- Remove the front stability for the vehicle.
- Remove the rear stability for the vehicle.
- Remove the front and rear stability for the vehicle.
- Remove the front and rear stability for the vehicle.
- Remove the front and rear stability for the vehicle.

WHILE LOADING AND SECURING THE CARGO

- Load weight must not exceed the allowed maximum.
- Load weight must not exceed the allowed maximum.
- Load weight must not exceed the allowed maximum.
- Load weight must not exceed the allowed maximum.

Lista de comprobación para conductores de camión

Los conductores profesionales que desempeñan su actividad profesional en el transporte de mercancías deben cumplir con un alto nivel de seguridad, tanto en el vehículo como en el conductor. El IRU ha desarrollado esta lista de comprobación para conductores de camión para garantizar la seguridad de todos los viajeros.

¿ESTA PREPARADO?

¿Está el vehículo en condiciones de uso? ¿Está el conductor en condiciones de conducir? ¿Está el vehículo en condiciones de uso? ¿Está el conductor en condiciones de conducir? ¿Está el vehículo en condiciones de uso? ¿Está el conductor en condiciones de conducir?

¿ESTA LISTO TODO LO DEMÁS?

¿Está el conductor en condiciones de conducir? ¿Está el vehículo en condiciones de uso? ¿Está el conductor en condiciones de conducir? ¿Está el vehículo en condiciones de uso? ¿Está el conductor en condiciones de conducir? ¿Está el vehículo en condiciones de uso?

IRU The Truck Driver's Safety Card

As a professional driver, you are performing a role that is essential for the economy and society. You are the ambassador of your company and of our profession.

Check the condition of your vehicle

Check the vehicle and transport documents

Secure your load properly

Fasten your seat-belt

ECO-CONDUITE EN SECURITE POUR CAMIONS
Nouvelles technologies de conduite!

L'ECO-conduite est non seulement un moyen simple, efficace et rentable de réduire la consommation de carburant, mais également un moyen de réduire l'impact de l'industrie du transport sur l'environnement. Le respect de l'agent de l'environnement de la société. C'est pourquoi les conducteurs à adopter leur conduite à chaque situation, l'IRU a mis au point une méthode de formation à l'ECO-conduite, ingénieuse, simple et sûre.

AVANT DE PRENDRE LA ROUTE

- Inspection visuelle avant le départ.
- Inspection visuelle avant le départ.
- Inspection visuelle avant le départ.
- Inspection visuelle avant le départ.
- Inspection visuelle avant le départ.
- Inspection visuelle avant le départ.

EN COURS DE VOYAGE

- Conduite éco-conduite.
- Conduite éco-conduite.
- Conduite éco-conduite.
- Conduite éco-conduite.
- Conduite éco-conduite.
- Conduite éco-conduite.

Checklist against fire for trucks

In order to prevent fire on vehicles, the IRU has worked out a checklist of essential preventive measures to be integrated in the maintenance performance activities of the transport operators.

Vehicle maintenance can be regular tasks can ensure early identification of vehicle problems and defects likely to cause a fire.

UNIFORM DUTIES

- Check the fire extinguisher.
- Check the fire extinguisher.
- Check the fire extinguisher.
- Check the fire extinguisher.
- Check the fire extinguisher.
- Check the fire extinguisher.

VEHICLE MAINTENANCE STAFF'S DUTIES

- Check the fire extinguisher.
- Check the fire extinguisher.
- Check the fire extinguisher.
- Check the fire extinguisher.
- Check the fire extinguisher.
- Check the fire extinguisher.

KONTROLLISTE ZUGÄNGLICHKEIT VON TAXIS

WENIGERE UNTERSCHIEDLICHE ZEICHEN FÜR DIE ZUGÄNGLICHKEIT VON TAXIS

Weniger unterschiedliche Zeichen für die Zugänglichkeit von Taxis

Weniger unterschiedliche Zeichen für die Zugänglichkeit von Taxis

Weniger unterschiedliche Zeichen für die Zugänglichkeit von Taxis

Weniger unterschiedliche Zeichen für die Zugänglichkeit von Taxis

Weniger unterschiedliche Zeichen für die Zugänglichkeit von Taxis



IRU saluts Road Safety Heroes





Cooperation with International Organisations



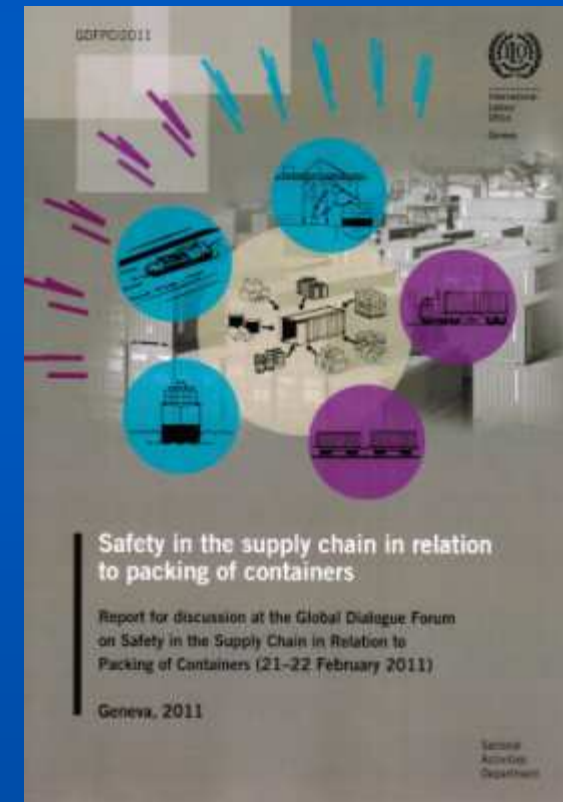
The IRU and UNMAS are partnering to clear 15km² of landmines from the 700km road that connects Afghanistan and its Central Asian neighbours.



Cooperation with International Organisations

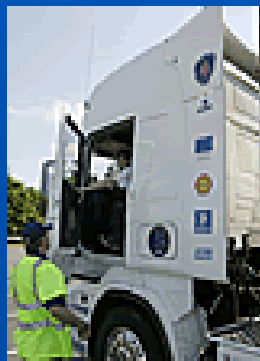
Safety in the Supply Chain in Relation to Packing of Container

- **Revise the ILO/IMO/UNECE guidelines on packing containers**
- **Amalgamate updated guidelines into a voluntary Code of Practice.**
- **Improve training through accredited training institutes.**





Cooperation with Social and Commercial Partners





Safety – A Priority of the Smart Move Campaign



safe

buses and coaches, a smart move for safer mobility!

Factsheet safe

Buses and coaches are the safest of all road transport modes. They also equal the safety level of trains, despite sharing infrastructure with other users and modes.

www.busesandcoaches.travel

www.busesandcoaches.travel

www.busesandcoaches.travel

road safety champions

Mode	Fatality Rate
Bus & Coach	0.02
Train	0.04
Sea	0.08
Airplane	0.10

Mode	Percentage
Bus & Coach	0.02%
Truck	1.08%
Van	0.07%
Motorcycle	0.07%
Tractor	0.07%
Tram	0.07%
Other	0.07%
Car	98.82%

Fatality rates in bus and coach transport are 3 times lower than those of boats, 50 times lower than those of cars, and 500 times lower than those of motorcycles.

Traveling to school by bus is 7 times safer than driving to school in the family car, 33 times safer than walking to school and 228 times safer than cycling in Australia, according to a study by the Institute of Transport Studies of Sydney University.

Global Improvements

Evolution of road infrastructure and road safety. Source: ICAO 2010

The industry strives to constantly improve its already impressive road safety record through initial and continuous driver training and improved vehicle technologies.



UN Decade of Action - IRU Action for the Decade

1. Analyse the main causes of accidents involving heavy commercial vehicles.
2. Support and promote the training of professional drivers and other road users.
3. Cooperate with the business community to improve road safety.





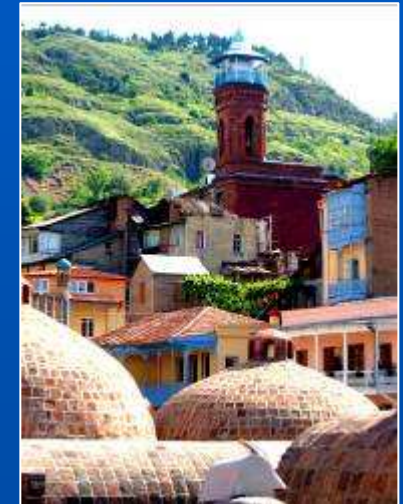
Road Freight Transport: Interconnecting every business and every transport mode between Europe and Asia



6th Euro-Asian Road Freight Transport Conference & Ministerial Meeting



Tbilisi, 16-17 June 2011





www.iru.org

*Working together
for a better future*



s i n c e 1 9 4 8