



UN/CEFACT

SIMPLE, TRANSPARENT AND EFFECTIVE PROCESSES

FOR GLOBAL BUSINESS

BUSINESS REQUIREMENTS SPECIFICATION (BRS)

Fishing License Authorization & Permit (FLAP) domain

Business domain: Fisheries

Business process: Electronic data exchange for fisheries control and management

Document identification: P1000 – 9; FLAP domain

Title: Fisheries Language for Universal eXchange

UN/CEFACT International Trade and Business Processes Group:

Version: 1.1.1

Maintenance ODP7

Release: Concluded

Document Change history log

Date of change	Version	Paragraphs changed	Summary of changes	Author
07/07/2014	0.0.1		Creation.	E. Honoré
20/08/2014	0.0.2		Updates from Maris' comments.	E. Honoré
15/09/2014	0.0.3	Response & Query	Adding chapter & Updates from MS meeting	E. Honoré
30/09/2014	0.0.4		Remove Vessel data	E. Honoré
08/10/2014	0.0.5		Query/Response mechanism	E. Honoré
15/10/2014	0.0.6		Change FLAP Request & Response data structure. Comments from MB	E. Honoré
21/10/2014	0.0.7		Editorial changes	E. Honoré
21/11/2014	0.0.8		Remarks from MS & New Delhi UN/CEFACT forum.	E. Honoré
26/11/2014	0.0.9		Change of Data model for FLAP Request message (request from MB): - change Targeted_ Catch to Targeted_ Quota	E. Honoré
19/12/2014	0.0.10		Data model review for FLAP Request message (request from MB)	E. Honoré
05/01/2015	0.1.0		Editorial updates. Preparation for harmonization.	E. Honoré
27/01/2015	0.1.1		Editorial updates.	E. Honoré
16/01/2015	0.1.2		Editorial & Diagrams for publication.	E. Honoré
25/02/2015	0.1.3		Editorial.	E. Honoré

06/07/2015	0.2.0		Harmonization with Fishing Activity (FA) domain. Remove tables of entities defined in FA domains. Change class diagram accordingly.	E. Honoré
03/08/2015	0.2.1	6.4.1;6.4.4	Change class diagram including entities modified in Sales & FA domains.	E. Honoré
NOV2015	1.0.0		Editorial & Diagrams for publication after harmonization.	E. Honoré
DEC2015	1.0.1		Editorial; including MB remarks.	E. Honoré
SEP2016	1.1.0		Diagrams updates including entities modified in Vessel & FA domain.	E. Honoré
MAR2017	1.1.1		Concluded in 29th UN/CEFACT Forum.	E. Honoré

Business Requirements Specification

Table of contents

1	PREAMBLE	6
2	REFERENCES	6
3	OBJECTIVE	7
4	SCOPE	7
5	STAKEHOLDERS	8
6	BUSINESS REQUIREMENTS	9
6.1	Business requirements lists	9
6.2	Business process elaboration	10
6.2.1	Request for Fishing License; Authorization; Permit message exchange.....	10
6.2.2	Query for FLAP Information.....	11
6.3	Information flow definition (activity diagram, description)	12
6.3.1	FLAP Request message exchange.....	12
6.3.2	Query for FLAP Information message transmission.....	14
	Activity Diagram.....	14
6.4	Information model definition (class diagram)	15
6.4.1	FLUX FLAP Request Declaration:	15
	FLAP Request_ Document Entity	16
	Fishing_ Category Entity.....	16
	FLAP_ Document Entity.....	17
	Vessel_ Crew Entity	18
	Delimited_ Period Entity	18
	Vessel_ Transport Charter Entity	19
	Targeted_ Quota Entity	19
6.4.2	FLUX FLAP Response Declaration:.....	20
6.4.3	FLUX FLAP Query Declaration:	21
	FLAP_ Query Entity	21
	FLAP_ Identity Entity	22
6.4.4	FLUX FLAP Query Response Declaration:	23
	Authorization_ Status Entity	24

1 Preamble

This BRS document builds upon the general principles set out in the P1000-1; General Principles BRS document; it details the Fishing License Authorization & Permit (FLAP) business domain identified in P1000-9.

This BRS is standardizing a part of reporting data exchanges between Member States and EC parties, using the UN/CEFACT Modelling Methodology (UMM) approach and Unified Modelling Language.

The structure of this document is based on the structure of the UN/CEFACT Business Requirements Specification (BRS) document reference CEFACT/ICG/005.

2 References

UN/CEFACT Modelling Methodology User Guide (CEFACT/TMG/N093)

UN/CEFACT Business Requirement Specification Document Template (CEFACT/ICG/005)

UN/CEFACT FLUX General Principles Business Requirement Specification Document (v2.x)

UN/CEFACT FLUX Vessel domain Business Requirement Specification Document (v3.x)

3 Objective

The objective of this document is to propose a standard for exchanging data between stakeholders in the context of request for fishing license, authorization or permit.

4 Scope

As described in Figure 1, under certain circumstances (e.g. fishing in international water controlled by RFMO, go fishing in waters other than the ones belonging to its Flag States) a vessel owner or agent has to request for fishing authorization to his Flag State (FS). The Flag State controls the validity of the request and sends it directly to the country having authority to delivering the Fishing Authorization, a.k.a. Fishing Authorization Delivering Authority (FADA). Optionally, the Flag State has to send first the request to a Central License & Authorization Provider (CLAP), e.g. European Commission or Agency, which plays the role of a Controller and forward the request to the appropriate FADA.

After having controlled the request, a Fishing Authorization Delivering Authority (FADA) sends back to the requester the Fishing License, Authorization or Permit. The Authorization is forwarded via the initial workflow back to the vessel owner or agent.

The scope of this domain focuses on the exchange between Flag State, a.k.a. FLAP Requester, Central License & Authorization Provider and Fishing Authorization Delivering Authority.

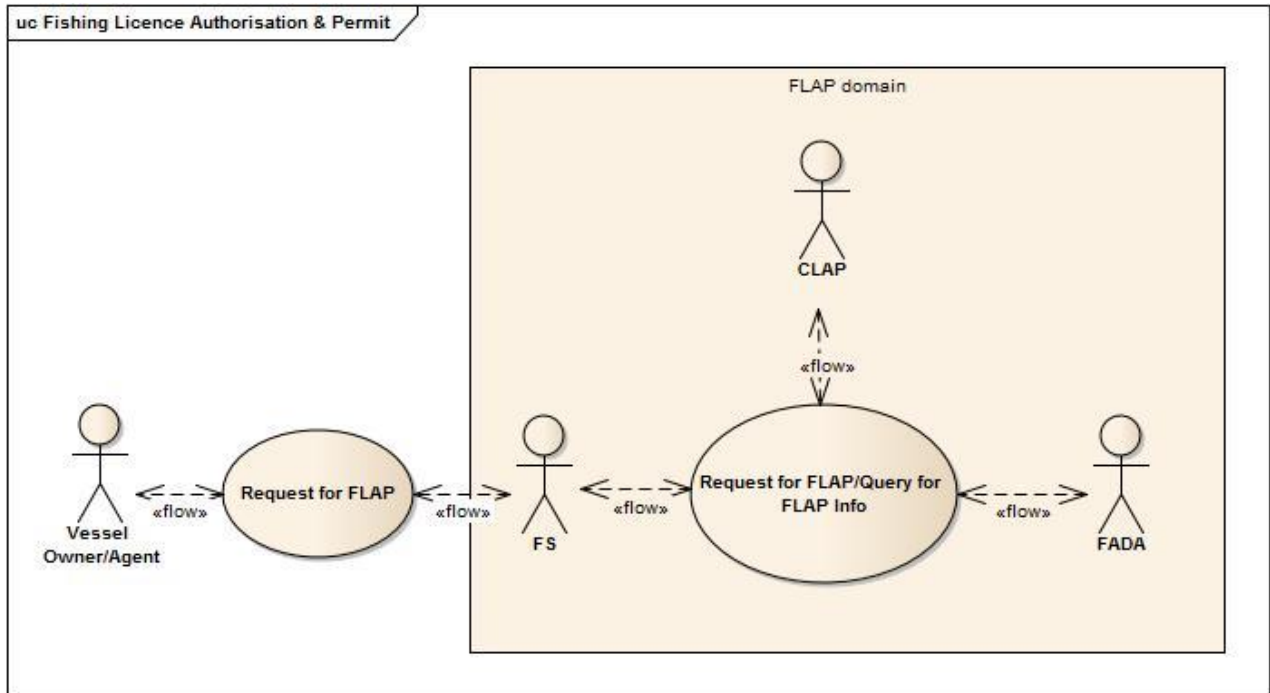


Figure 1: Fishing License Authorization & Permit: general overview diagram.

Categories	Description and Values
Business Process	General Message Exchange Request for Fishing License, Authorization or Permit
Product Classification	None
Industry Classification	Fisheries sector
Geopolitical	Global
Official Constraints	International regulations, agreements and conventions National regulations Technical measures
Business Process Role	None
Supporting Role	None
System Capabilities	None

5 Stakeholders

FLAP requester	Typically (not exhaustive): The Vessel Owner, Agent or any actor playing a role for requesting authorization on behalf of the Vessel Owner. Flag State: The state, which vessels flying their flag, is requesting for a Fishing License; Authorization; Permit directly to the Fishing Authorization Delivering Authority or via the Central License Authority Provider.
Central License & Authorization Provider (CLAP)	Any legal entity receiving the request for FLAP. For instance: EU, Regional Fisheries Management Organization (RFMO), etc.
Fishing Authorization Delivering Authority (FADA)	Any legal entity having authority for delivering a FLAP. For instance: Coastal States, EU, Regional Fisheries Management Organization (RFMO), etc.

6 Business requirements

6.1 Business requirements lists

The following tables list the requirements identified for this domain.

Number	Business Requirement Statement	Business Transaction Name for this Requirement
A1	A FLAP Requester, such as a Flag State (FS), transmits its request to a FADA. The FADA verifies the request validity and replies back to the FLAP requester.	Transmission of FLAP Request to FADA.
A2	A FLAP Requester, such as a Flag State (FS), transmits its request to a CLAP. The CLAP verifies the request validity and forwards it to FADA. FADA replies back to CLAP, which informs the FLAP requester.	Transmission of FLAP Request to FADA via a CLAP.
A3	Any Party queries for receiving the detail of FLAP. Some filters can be applied for retrieving the response, which can include the list of FLAP Requests or an individual FLAP Request and its details. Filters can be such as: <ul style="list-style-type: none"> – FLAP Request status (for group or individual FLAP Request); – FLAP Documents delivered for a certain period of time; – FLAP Documents delivered for certain FADA; – FLAP Documents delivered for certain fishing category; – FLAP Documents delivered for certain vessels (per identifier(s), registration countries, vessel types, vessels names). 	Query for FLAP Request details.

Figure 2: Business Requirement List

Number	Data Requirement Statement
B1	A FLAP Request must have a unique identifier, creation date & time and purpose code ¹ .
B2	Vessel identifiers provided in the Request should refer to an existing vessel for which the characteristics have been delivered through a FLUX Report Vessel Information message. ²
B3	One FLAP Request should refer to one vessel only.
B4	FLAP Request must contain the information on FADA to which the request is related.
B5	FLAP Request must contain the fishing category for which the FLAP Request is needed.
B6	FLAP Request must contain the type of document required (i.e. fishing authorization, permit, license, etc.).

Figure 3: Data Requirement List

¹ FLUX General Principle rule: see *FLUX P1000 – 1: General Principles BRS* document.

² The definition of *Vessel Information* message can be found in *FLUX P1000-2 Vessel BRS* document.

6.2 Business process elaboration

6.2.1 Request for Fishing License; Authorization; Permit message exchange

Principles

An actor sends a request for FLAP to one other actor.

Use case: FLAP Request message exchange

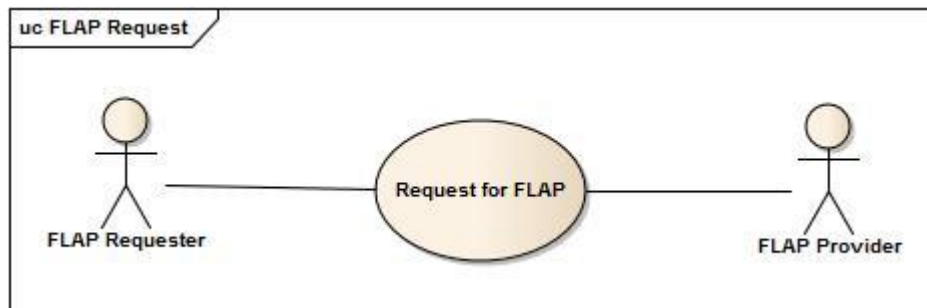


Figure 4: Request for FLAP use case diagram

Use case description

Business process name	FLAP Request message transmission
Identifier	FLAPRMT
Actors	FLAP requester, FLAP Provider
Description	The requester transmits the FLAP Request to a FLAP Provider, optionally acting as a relay to a third actor.
Pre-condition	Underlying framework to exchange FLUX business messages. Vessel information sent using FLUX Vessel information message. ³
Post-conditions	None

³ The definition of *FLUX Vessel Information* message can be found in the *Vessel* document.

Scenarios	<p>1) Direct FLAP Request: A requester sends directly the FLAP Request message to the provider.</p> <p>2) Indirect FLAP Request: A requester sends directly the FLAP Request message to a Central License & Authorization Provider (CLAP) first; The CLAP forward the request to a FADA after validation and send back the answer to the original requester.</p>
Remarks	None

6.2.2 Query for FLAP Information

Principles

At regular intervals or when a particular event occurs, one party requests for information about fishing licenses, authorization or permit from another party holding this information.

Use Case

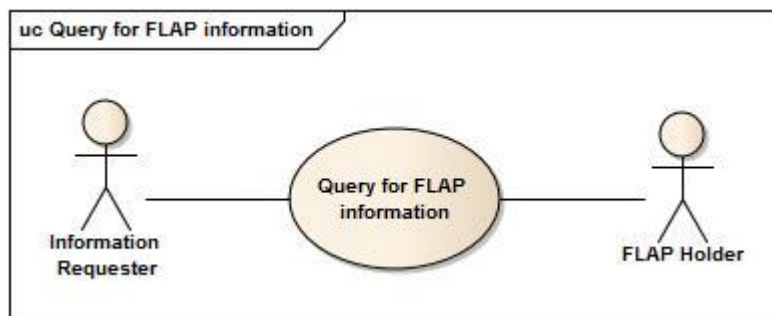


Figure 5: Use Case diagram for Query for FLAP Information message transmission

Business process name	Query for FLAP information
Identifier	QFLAPI
Actors	Information Requester, FLAP Holder
Description	An information requester queries a partner holding FLAP information and retrieves it.
Pre-condition	Underlying framework to exchange FLUX business messages
Post-conditions	None
Scenarios	None
Remarks	None

6.3 Information flow definition (activity diagram, description)

6.3.1 FLAP Request message exchange

The activity diagram allows identifying all the significant information flows between the FLAP Requester and the FLAP Provider. The diagrams show the two scenarios of having a direct request; directly to a FADA; or Indirect Request; first to a Central License & Authorization Provider (CLAP) relaying the request to the actual FADA.

Activity Diagram

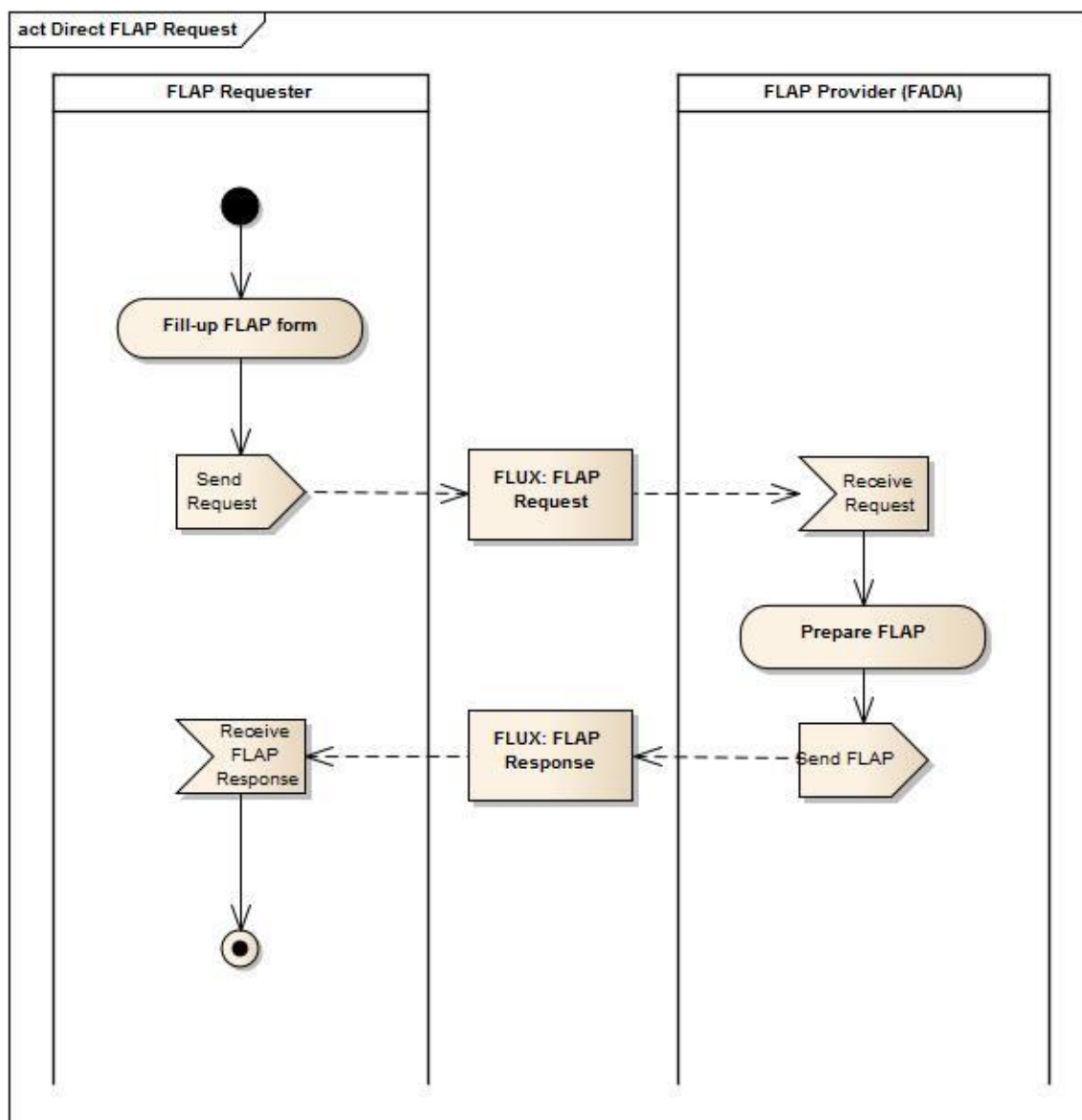


Figure 6 Scenario 1: Direct FLAP Request message transmission diagram

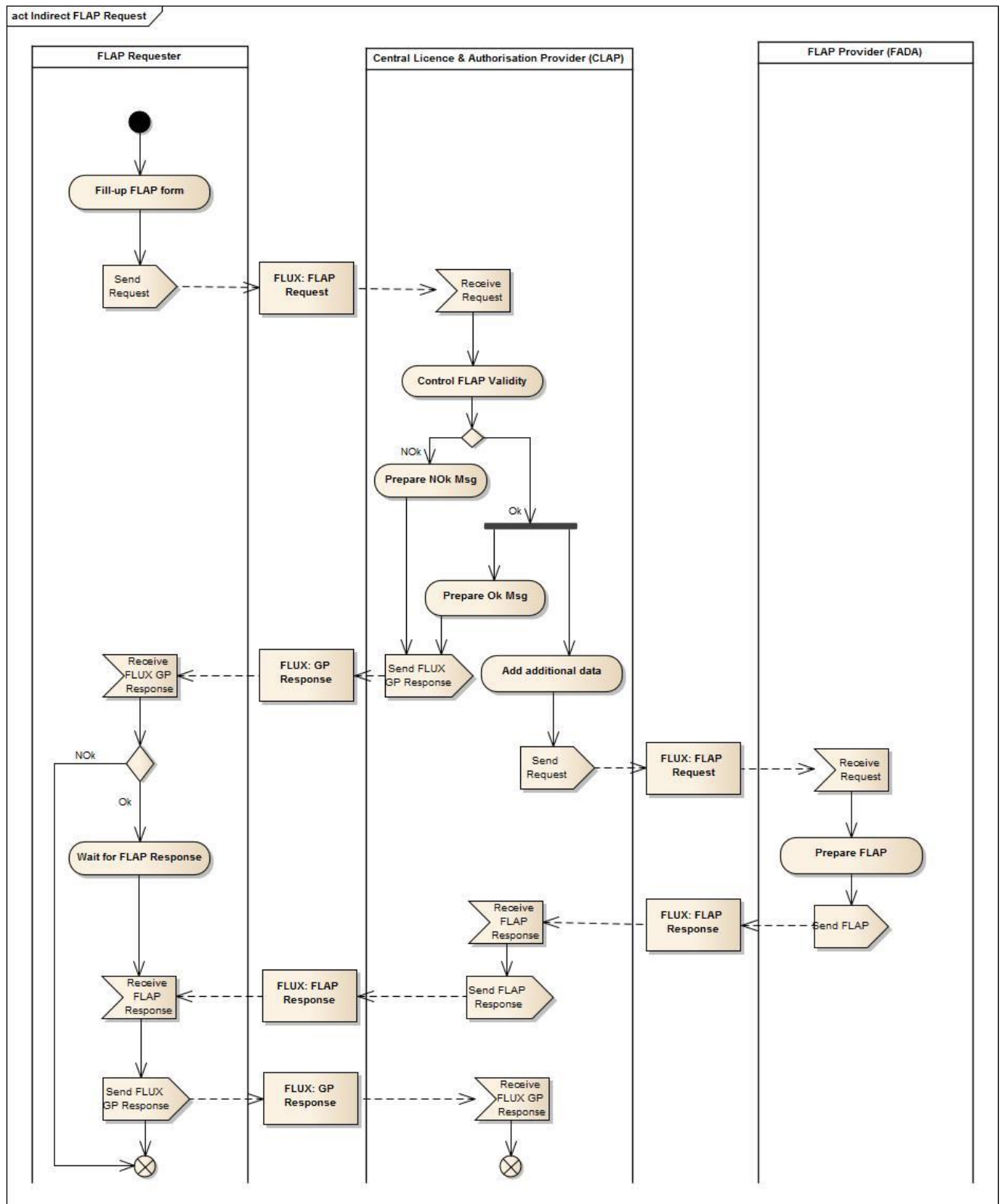


Figure 7 Scenario 2: Indirect FLAP Request message transmission diagram

6.3.2 Query for FLAP Information message transmission

Activity Diagram

The following activity diagram defines the significant information flows between the requester for FLAP information and the holder of this information.

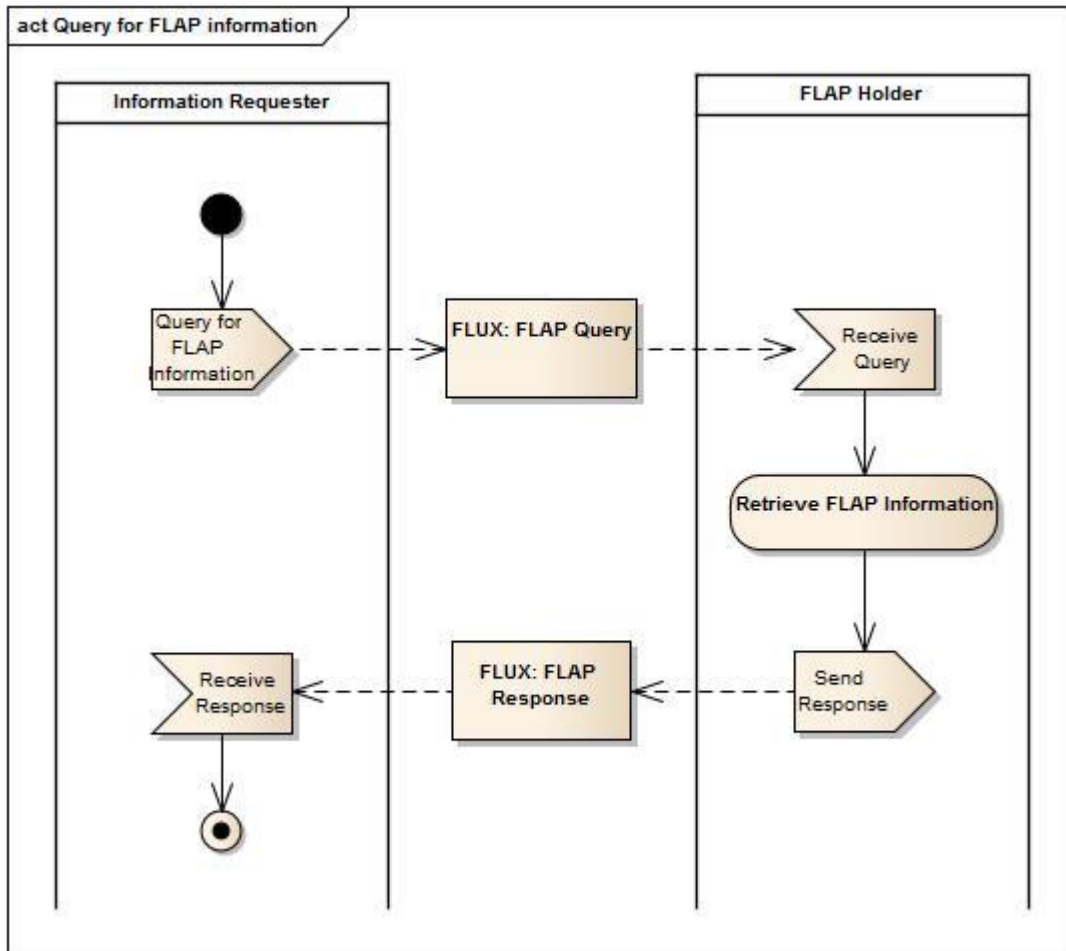


Figure 8: Activity Diagram for Query for FLAP Information message transmission

In accordance with the FLUX general principles, all transmissions will end in a response from message receiver to message sender, indicating whether the message has been processed successfully or otherwise.

6.4 Information model definition (class diagram)

The Class diagram describes all the necessary classes of information for a flow of information exchange for the FLAP Request message transmission case.

6.4.1 FLUX FLAP Request Declaration:

Description: A Fisheries Language for Universal eXchange (FLUX) message requesting a Fishing Licence, Authorization or Permit (FLAP)⁴.

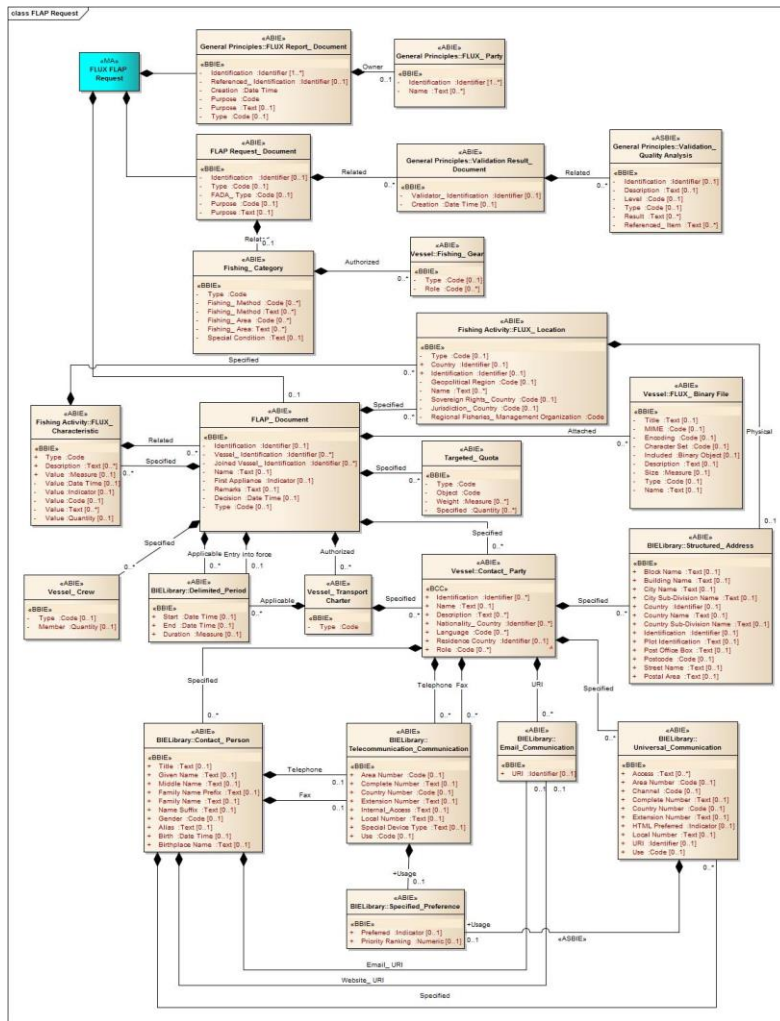


Figure 9: class diagram FLUX FLAP Request

⁴ Basic entities such as *FLUX Report_Document*, *FLUX_Response*, and *FLUX_Party* are defined the *FLUX P1000 – 1: General Principles BRS* document. Entities such as *Vessel_Transport Means* are defined in *FLUX P1000 – 2: Vessel BRS* document.

FLAP Request Document Entity

Description: This entity contains a document that provides information for a Fishing License, Authorization, Permit (FLAP) request.

Mult.	Business term	Rel.	Type	Description
0..1	Identification	Att	Identifier	The identifier for this FLAP request document.
0..1	Type	Att	Code	The code specifying a type of FLAP request document.
0..1	FADA_Type	Att	Code	The code specifying a type of Fishing Authorization Delivering Authority (FADA) for this FLAP request document.
0..1	Purpose	Att	Code	The code specifying the purpose for this FLAP request document, such as withdrawal or termination.
0..1	Purpose	Att	Text	The purpose, expressed as text, for this FLAP request document.
0..1	Related	Ass	Fishing_Category	The fishing category related to this FLAP request document.
0..n	Related	Ass	Validation Document ⁵ Result_	A result document of a validation process related to this FLAP request document.

Fishing Category Entity

Description: The entity that provides information of a division of fishing sharing characteristics, such as a type of vessel, a type of fishing activity or a type of fishing gear deployed.

Mult.	Business term	Rel.	Type	Description
1	Type	Att	Code	The code specifying a type of fishing category.
0..n	Fishing_ Method	Att	Code	A code specifying the type of fishing method for this fishing category.
0..n	Fishing_ Method	Att	Text	A fishing method, expressed as text, for this fishing category.
0..n	Fishing_ Area	Att	Code	A code, such as a Food & Agriculture Organization (FAO) area code, specifying the fishing area for this fishing category.
0..n	Fishing_ Area	Att	Text	A fishing area, expressed as text, for this fishing category.

⁵ The definition of base entities such as *Validation Result_ Document*, *Validation_ Quality Analysis* can be found in the *FLUX P1000 – 1: General Principles BRS* document.

0..1	Special Condition	Att	Text	The special condition, expressed as text, for this fishing category.
0..n	Authorized	Ass	Fishing_Gear	Fishing gear authorized for this fishing category. ⁶

FLAP Document Entity

Description: The entity is used as a document that provides information for a Fishing License, Authorization, Permit (FLAP), primarily for a vessel.

Mult.	Business term	Rel.	Type	Description
0..1	Identification	Att	Identifier	The identifier for this FLAP document.
0..n	Vessel_ Identification	Att	Identifier	A vessel identifier, such as an identifier defined by the Food and Agriculture Organization (FAO), the radio call sign, or an external marking, for this FLAP document.
0..n	Joined Identification	Vessel_ Att	Identifier	An identifier for a joined vessel for this FLAP document.
0..1	Name	Att	Text	The name, expressed as text, of this FLAP document.
0..1	First Appliance	Att	Indicator	The indication of whether or not this is the first application for this FLAP document.
0..1	Remarks	Att	Text	Remarks, expressed as text, in this FLAP document.
0..1	Decision	Att	Date Time	The decision date, time, date time or other date time value for this FLAP document.
0..1	Type	Att	Code	The code specifying the type of FLAP document.
0..n	Specified	Ass	FLUX_Characteristic ⁷	A Fisheries Language for Universal eXchange (FLUX) characteristic specified for this FLAP document.
0..n	Specified	Ass	Vessel_Crew	A vessel crew specified for this FLAP document.
0..n	Applicable	Ass	Delimited_Period	A delimited period applicable to this FLAP document.
0..1	Entry into force	Ass	Delimited_Period	The delimited period when this FLAP document enters into force.
0..n	Specified	Ass	Vessel_Charter Transport	A vessel transport charter specified for this FLAP document.
0..n	Specified	Ass	Contact_Party ⁶	A contact party specified for this FLAP document.

⁶ Entities such as *Fishing_Gear* or *Contact_Party* are defined in *FLUX P1000 – 2: Vessel BRS* document.

⁷ Entity such as *FLUX_Characteristic*, *FLUX_Location* and all related entities are defined in *FLUX P1000 – 3 Fishing Activity (FA) BRS* document.

0..n	Specified	Ass	Targeted_Quota	A targeted quota specified in this FLAP document.
0..n	Attached	Ass	FLUX_Binary File	A Fisheries Language for Universal eXchange (FLUX) binary file attached to this FLAP document.
0..n	Specified	Ass	FLUX_Location ⁷	A Fisheries Language for Universal eXchange (FLUX) location specified for this FLAP document.
0..n	Related ⁸	Ass	Validation Document ⁹ Result_	A result document of a validation process related to this FLAP document.
0..n	Related ⁸	Ass	FLAP Document Request_	A request document related to this FLAP document.
0..n	Specified ⁸	Ass	Authorization_Status	An authorization status specified for this FLAP document.

Vessel_Crew Entity¹⁰

Description: Entity used to provide information of a group of people who work on or operate a vessel.

Mult.	Business term	Rel.	Type	Description
0..1	Type	Att	Code	The code specifying a type of this vessel crew.
0..1	Member	Att	Quantity	The number of members in this vessel crew.

Delimited_Period Entity

Description: Entity use to provide information of a period of time from a start date time onwards up to an end date time.

Mult.	Business term	Rel.	Type	Description
0..1	Start	Att	Date Time	The date, time, date time or other date time value for the start of this delimited period.
0..1	End	Att	Date Time	The date, time, date time or other date time value for the end of this delimited period.

⁸ Association that is used only in a *FLUX FLAP Query Response* message (see 6.4.4)

⁹ The definition of base entities such as *Validation Result_Document*, *Validation_Quality Analysis* can be found in the *General Principles* document.

¹⁰ *Vessel_Crew* entity is defined in *FLUX P1000 – 2: Vessel BRS* document. The table contains only entity elements used in this sub-domain which are extending the basic definition.

0..1	Duration	Att	Measure	The measure of the length of time for this delimited period such as hours, days, weeks, months or years.
------	----------	-----	---------	--

Vessel Transport Charter Entity

Description: Entity used to provide information of the reservation of a vessel for a particular usage.

Mult.	Business term	Rel.	Type	Description
1	Type	Att	Code	The code specifying the type of vessel transport charter.
0..n	Applicable	Ass	Delimited_Period	A delimited period applicable to this vessel transport charter.
0..n	Specified	Ass	Contact_Party ¹¹	A contact party specified for this vessel transport charter.

Targeted Quota Entity

Description: Entity containing the information of a limited quantity of thing, such as fish or effort, which under official controls is targeted to be caught, produced, exported, imported or consumed.

Mult.	Business term	Rel.	Type	Description
1	Type	Att	Code	The code specifying the type of targeted quota.
1	Object	Att	Code	The code specifying an object to which this targeted quota is applied.
0..n	Weight	Att	Measure	A measure of the weight for this targeted quota.
0..n	Specified	Att	Quantity	A specified quantity for this targeted quota.

¹¹ *Contact_Party* entity is defined in *FLUX P1000 – 2: Vessel BRS* document.

6.4.2 FLUX FLAP Response Declaration:

Description: A Fisheries Language for Universal eXchange (FLUX) message for responding to a Fishing Licence, Authorization or Permit (FLAP) request¹².

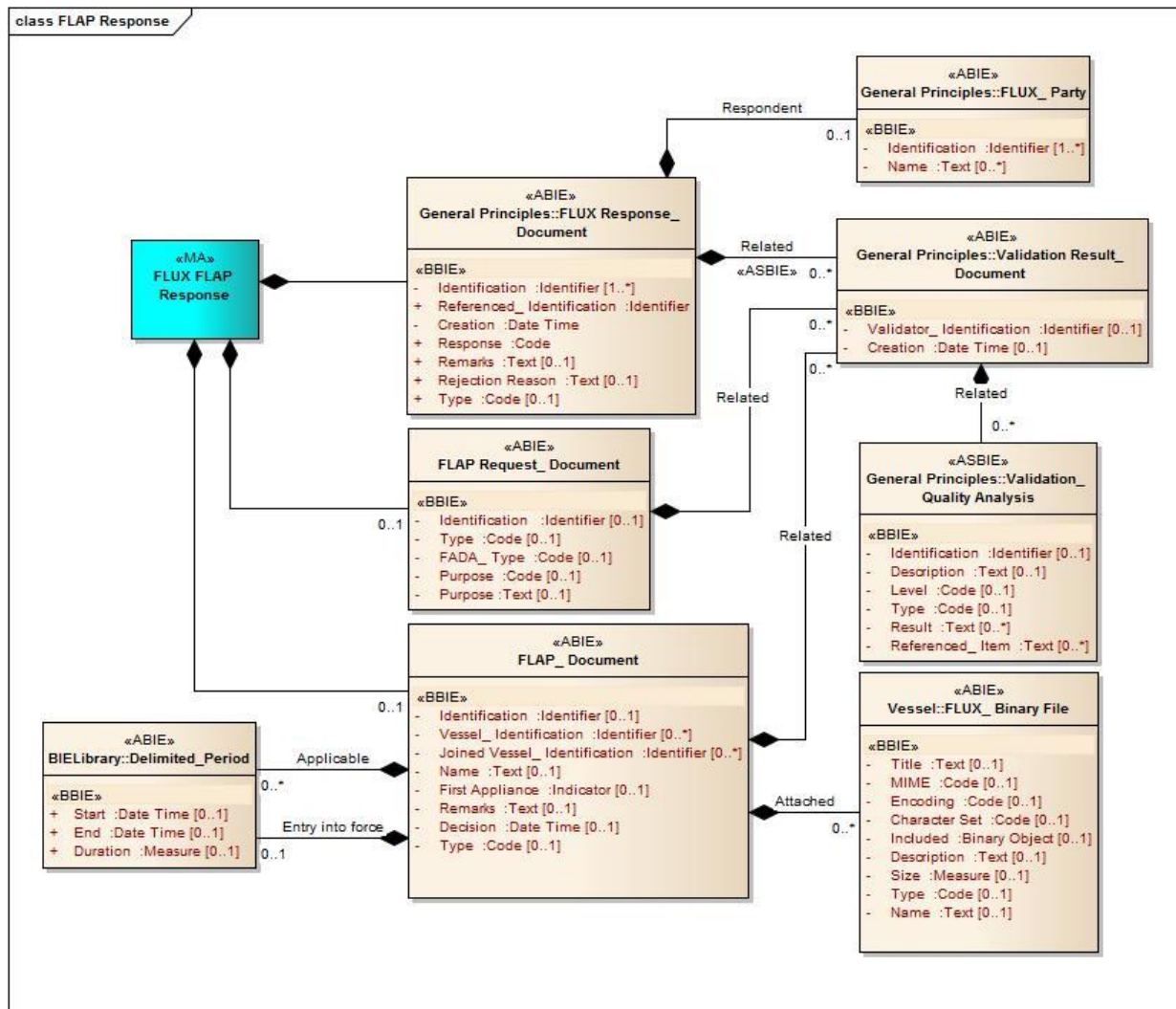


Figure 10: class diagram FLUX FLAP Response

Note: All entities of this declaration are defined either previously in this document or elsewhere in other FLUX documents.

¹² Entities such as *FLUX_Response*, *Validation Result_Document* and *Validation Quality_Result* are defined in *FLUX P1000 – 1: General principles BRS* document.

6.4.3 FLUX FLAP Query Declaration:

Description: A Fisheries Language for Universal eXchange (FLUX) message for querying Fishing Licence, Authorization or Permit (FLAP) information.

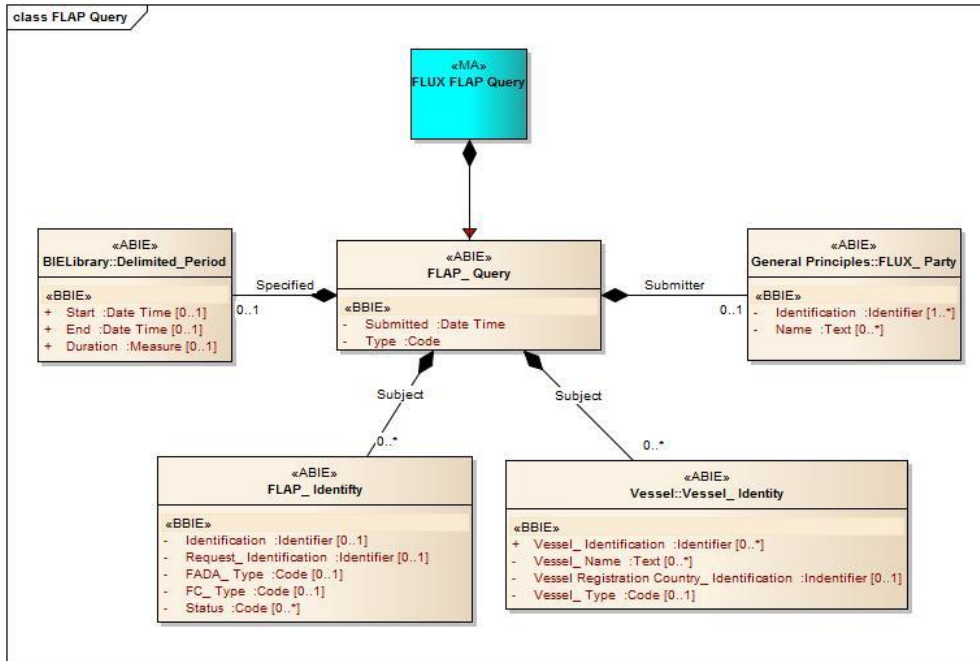


Figure 11: class diagram FLUX FLAP Query

FLAP_Query Entity

Description: Entity containing a formally raised question or request for Fishing Licence, Authorization, Permit (FLAP) information.

Mult.	Business term	Rel.	Type	Description
1	Submitted	Att	Date Time	The date, time, date time, or other date time value when this FLAP query was submitted.
1	Type	Att	Code	The code specifying the type of FLAP query.
0..1	Specified	Ass	Delimited_Period	The delimited period specified for this FLAP query.
0..n	Subject	Ass	FLAP_Identity	An identity of a subject of this FLAP query.
0..n	Subject	Ass	Vessel_Identity ¹³	A vessel identity of a subject of this FLAP query.
0..1	Submitter	Ass	FLUX_Party ¹⁴	The Fisheries Language for Universal eXchange (FLUX) party that submits this FLAP query.

¹³ Vessel_Identity entity is defined in FLUX P1000 – 2: Vessel BRS document.

¹⁴ FLUX_Party entity is defined in FLUX P1000 – 1: General principles BRS document.

FLAP Identity Entity

Description: Entity containing information which uniquely identifies a Fishing License, Authorization, Permit (FLAP) object.

Mult.	Business term	Rel.	Type	Description
0..1	Identification	Att	Identifier	The identifier for this FLAP identity.
0..1	Request_ Identification	Att	Identifier	The identifier of a request for this FLAP identity.
0..1	FADA_ Type	Att	Code	The code specifying the Fishing Authorization Delivering Authority (FADA) type for FLAP identity.
0..1	FC_ Type	Att	Code	The code specifying the type of Fishing Category (FC) of FLAP identity.
0..n	Status	Att	Code	A code specifying the status of this FLAP identity.

Note: Other entities of this declaration are defined either previously in this document or elsewhere in other FLUX documents.

6.4.4 FLUX FLAP Query Response Declaration:

Description: A Fisheries Language for Universal eXchange (FLUX) message for responding to a Fishing Licence, Authorization or Permit (FLAP) query.

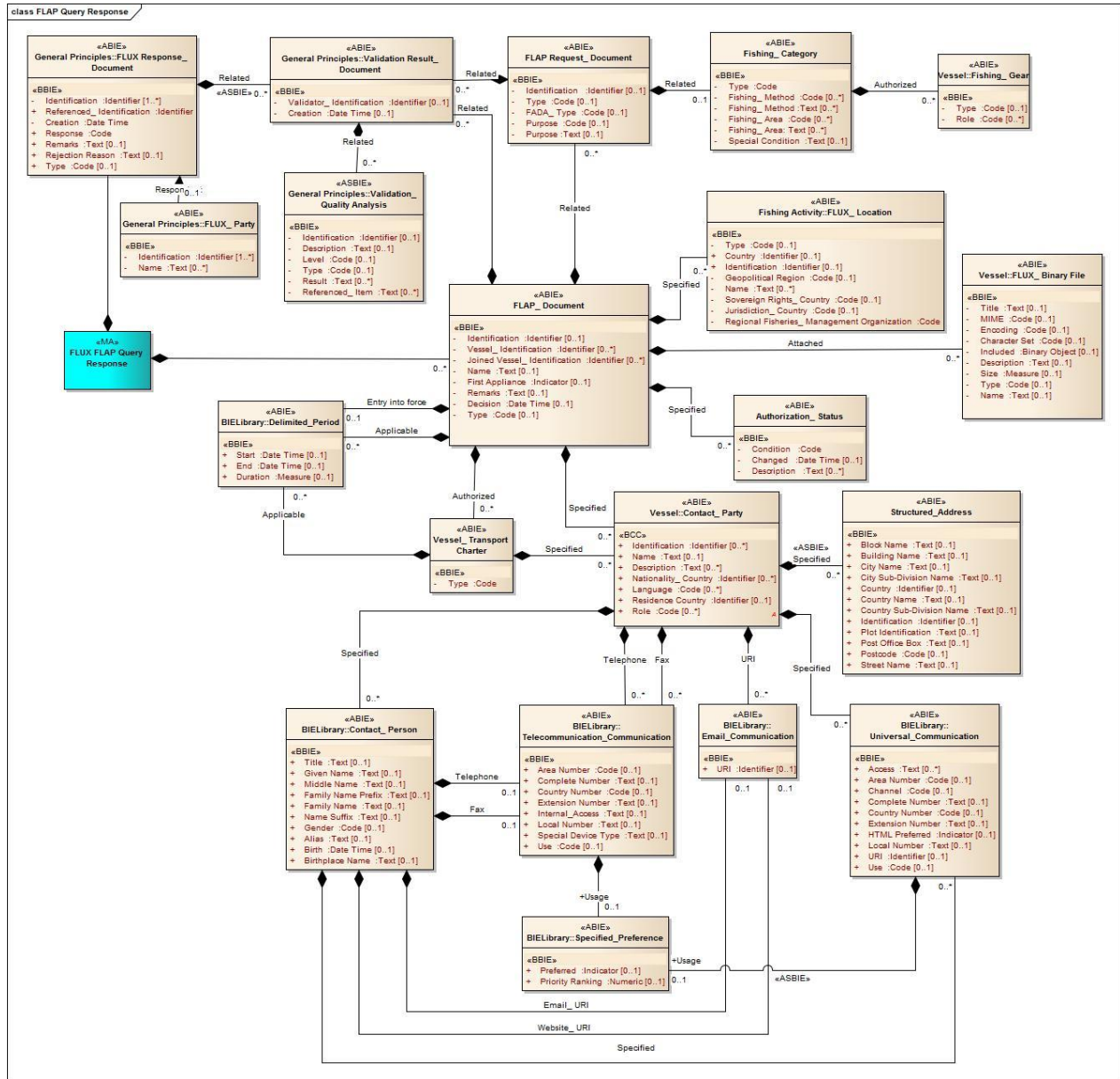


Figure 12: class diagram FLUX FLAP Query Response

Authorization Status Entity

Description: The entity providing information relevant to a condition of an authorization.

Mult.	Business term	Rel.	Type	Description
1	Condition	Att	Code	The code specifying the status condition of this authorization.
0..1	Changed	Att	Date Time	The date, time, date time, or other date time value when the status of this authorization changed.
0..n	Description	Att	Text	A textual description of the status of this authorization.