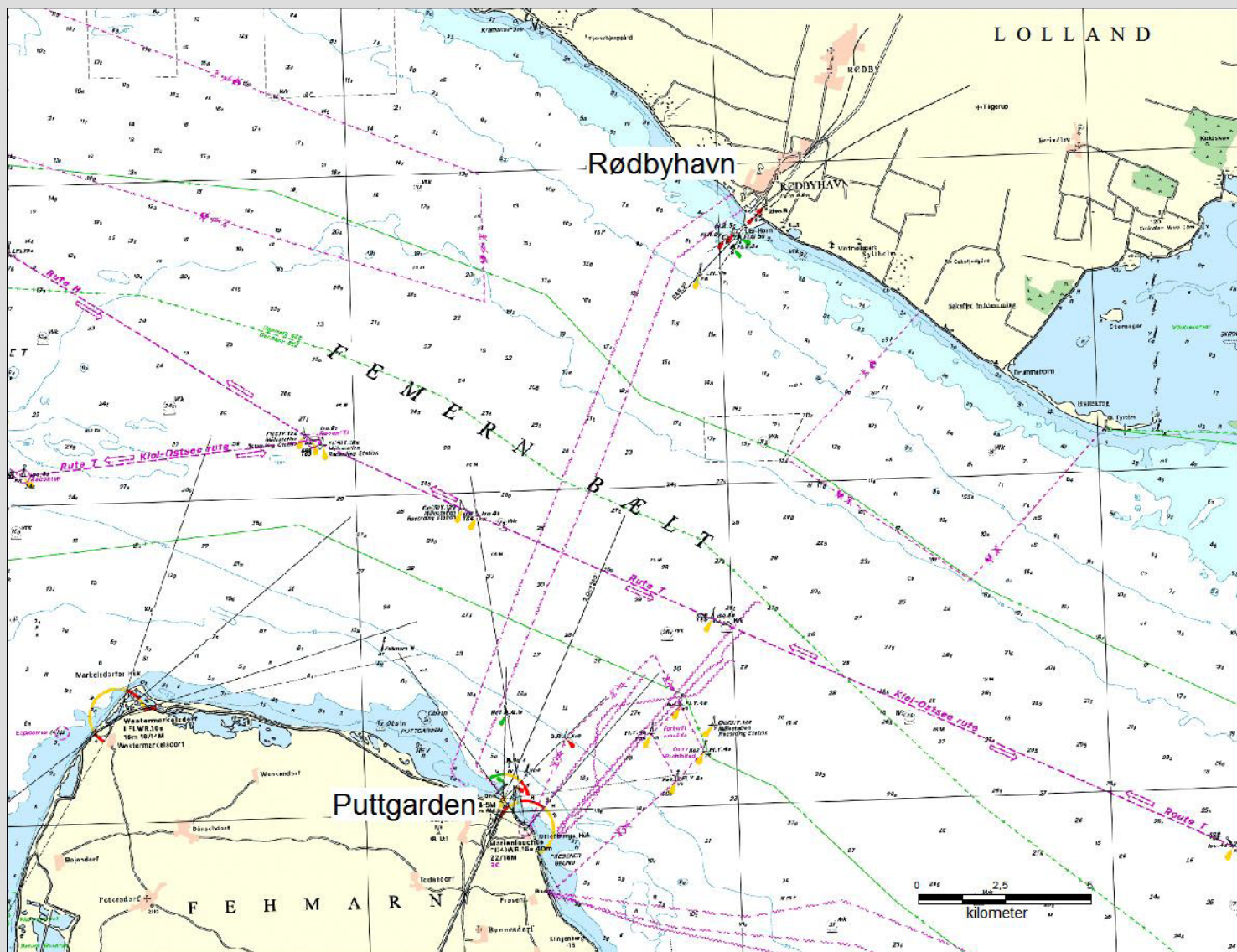


Fixed Link across Fehmarnbelt

Hendrik Schleier, hendrik.schleier@ls.landsh.de,
Proxy Head of Department of Plan Approval authority
phone: +49 431 383 2251

Fixed Link across Fehmarnbelt



22.10.2009

Landesbetrieb Straßenbau und Verkehr Schleswig-Holstein (LBV)

- Plan Approval authority for roads, railways, high-voltage transmission lines etc, therefore LBV is responsible for the decision about a fixed Link across Fehmarnbelt Major authority for Roads, public traffic
- Subordinated to the Ministry of Economics, Traffic, Sciences of Schleswig-Holstein
- Situated in Kiel near the Baltic sea

Formal administrative Procedure in Schleswig Holstein:

- scoping procedure (incl. Espoo procedure)
 - Environmental authorities
 - NGO`s
 - townships
- Hearing procedure (incl. Espoo procedure)
 - all authorities, townships which are affected by the project
 - NGO`s
 - Public
- Decision on the application of Femern A/S
- Court Proceeding

Scoping procedure: first part

- Femern A/S has given a draft of the scoping report in german/english/danish
- The Ministry of Environment of Schleswig-Holstein + LBV are making a check of the paper
- The results of the check (+ the “danish” check) will lead to the final scoping-report
- The report will be translated into german, english and polish
- The Espoo Notification (Art. 3) will start together in Germany and Denmark by sending the scoping-paper to the baltic countries in the beginning of 2010 (We try to send a electronic version a couple of days before)
- recommended Time will be 8 weeks for a written answer of the parties

Scoping procedure: second part

- the answers of the authorities, NGO's, townships and baltic states have to be checked and commented by femern A/S
- Invitation to a meeting in Germany (aprox. in April 2010) to discuss the answers and comments (Comments of Femern A/S will be sent to the participants in order to prepare the meeting) -if needed with simultaneous translation, may be, we will have a special meeting with the Baltic states
- Decision (aprox. in April/May 2010) about the scope of the environmental impact study in coordination with Denmark (This decision will be translated and sent to the participants)

Hearings: (in 2011/2012)

- Plans will be laid out for public
- Plans will be send to all authorities, NGO's, Espoo Participants
- Every answer (within a time of three months) has to be checked/commentated by Femern A/S
- LBV will check the comments of Femern A/S
- If the comments of Femern look like serious: hearings will be conducted
- Hearings: if needed with simultaneous translation

Questions???

Contact:

Andrea Gerhardt, Mercatorstr. 9, 24106 Kiel

Phone +49 431 383 2792

Andrea.gerhardt@ls.landsh.de