



Methane Alert and Response System

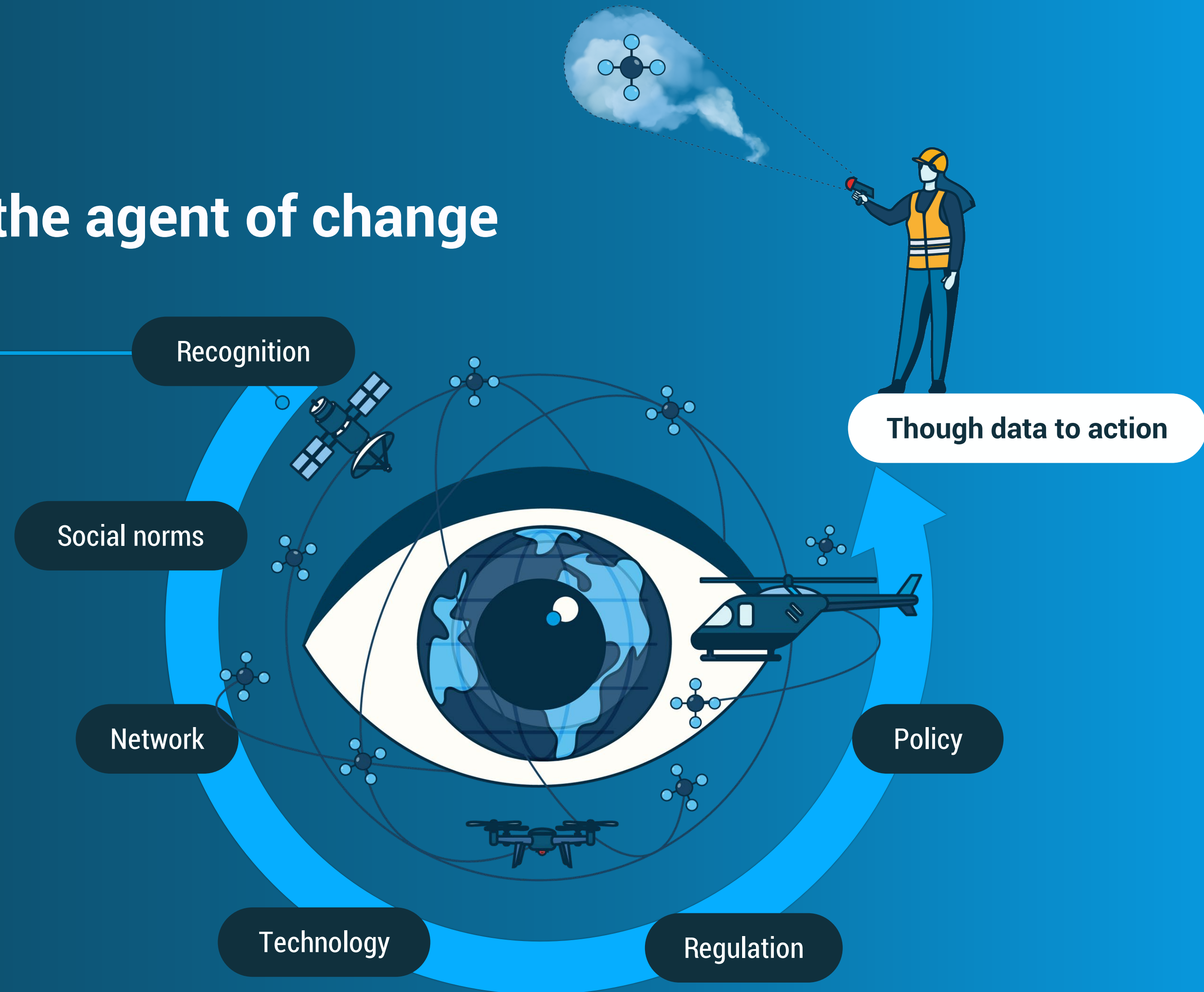
Manfredi Caltagirone

March 2023



→ **UNEP's IMEO:**
data centered around the agent of change

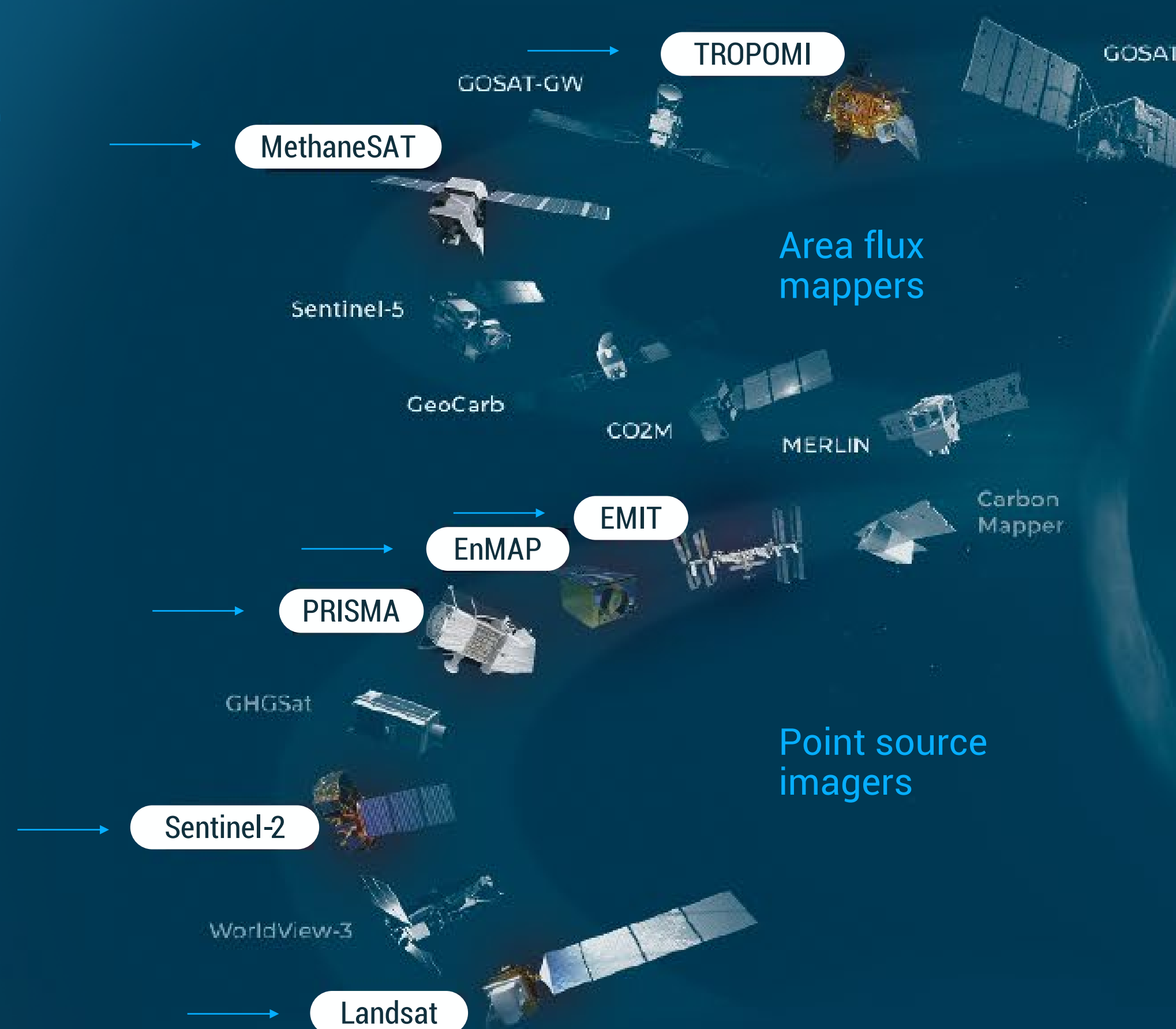
The International Methane Emissions Observatory exists to provide open, reliable, and actionable data to those that can act to reduce methane emissions



→ **Component 1: MARS uses state-of-the-art, publicly available satellite data to drive notification and mitigation processes**

Global mapping satellites are used to identify very large methane plumes and methane hot spots

Further analysis using other satellites and datasets **enables attribution**

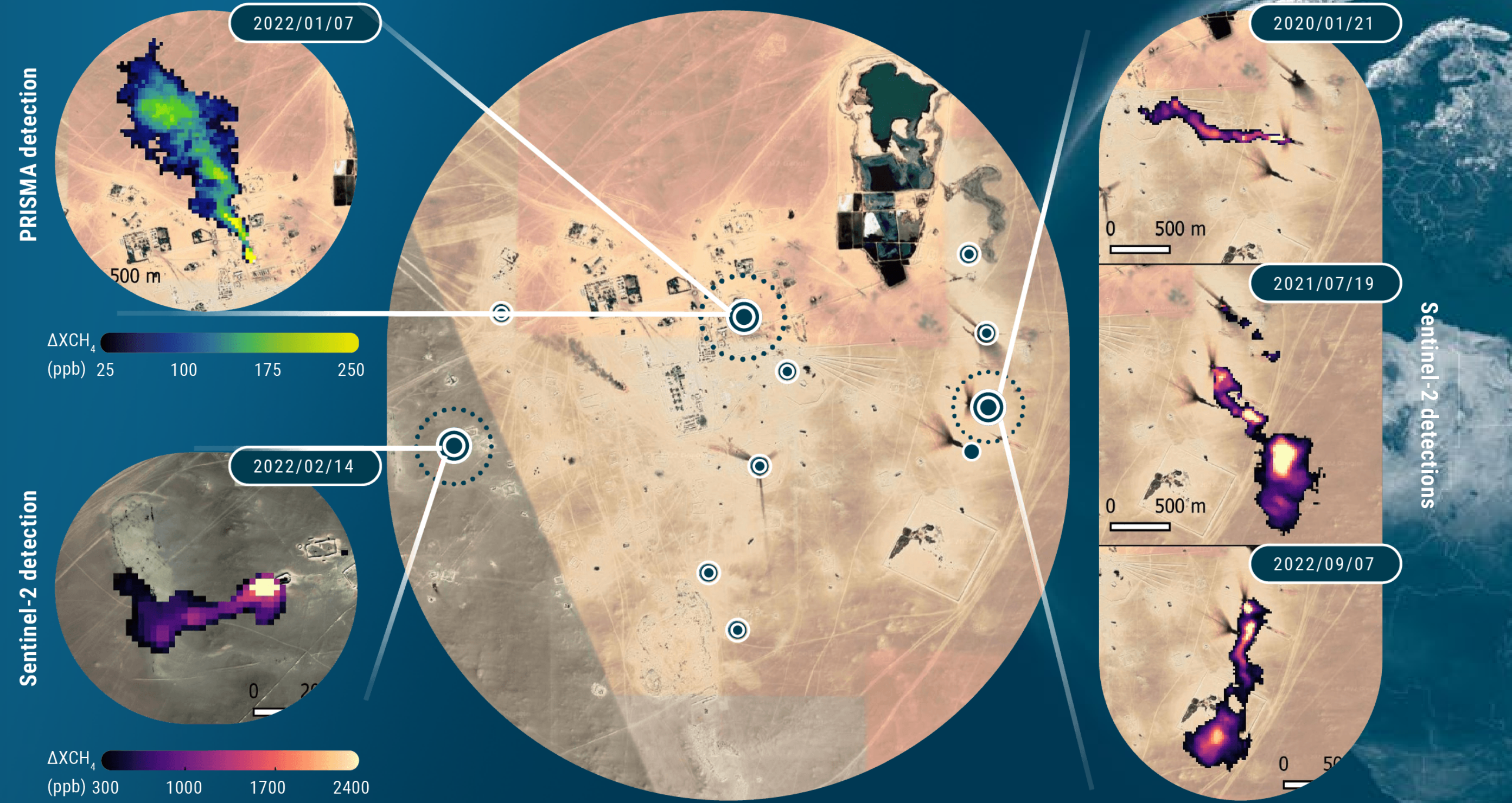


Methane Observations from Space

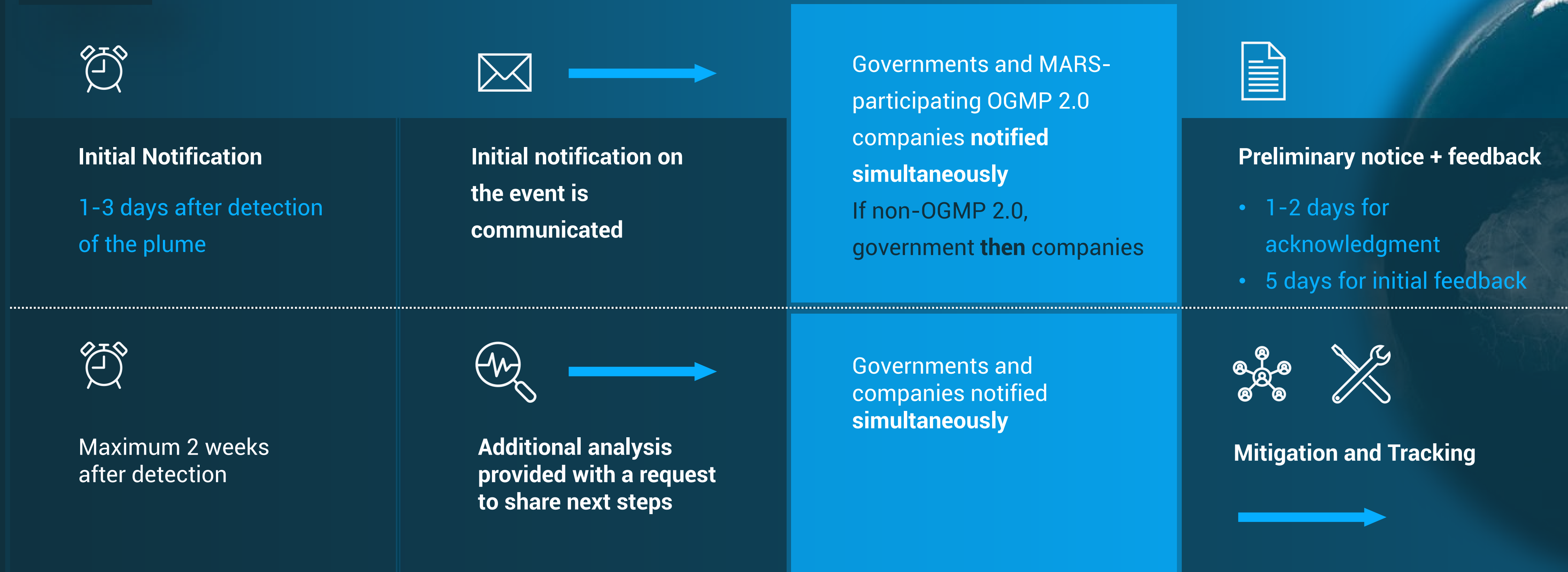
→ **Component 1: MARS uses state-of-the-art, publicly available satellite data to drive notification and mitigation processes**

Global mapping satellites are used to identify very large methane plumes and methane hot spots

Further analysis using other satellites and datasets **enables attribution**



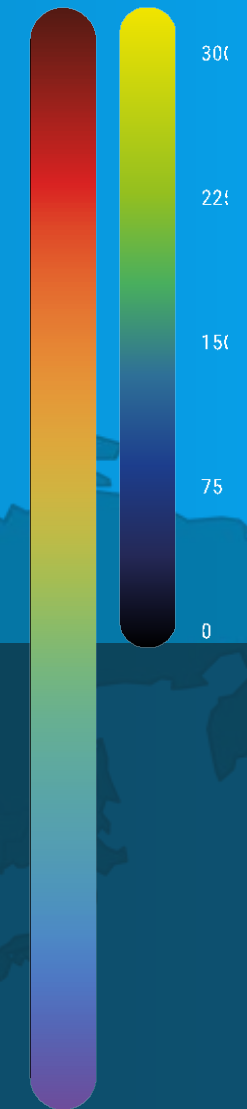
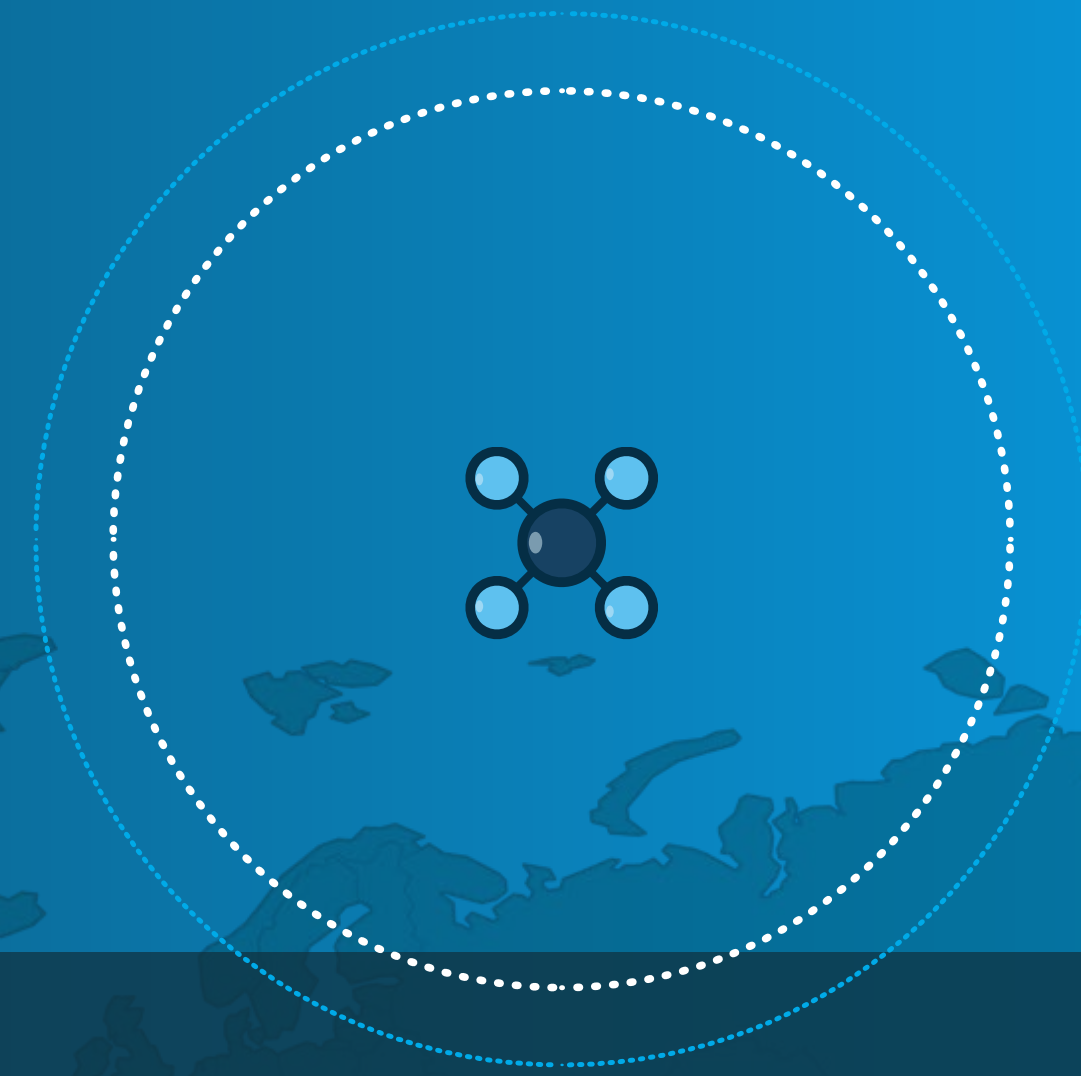
→ 2 Component 2: MARS notification process (Initial and Full)



→ MARS improves global transparency on methane emissions

MARS supports IMEO's objective to provide **open, reliable, actionable methane emissions data globally.**

→ **Active participation in MARS enables stakeholders to demonstrate leadership on methane emissions and a commitment to best-in-class operations.**



MARS Data Publication Policy

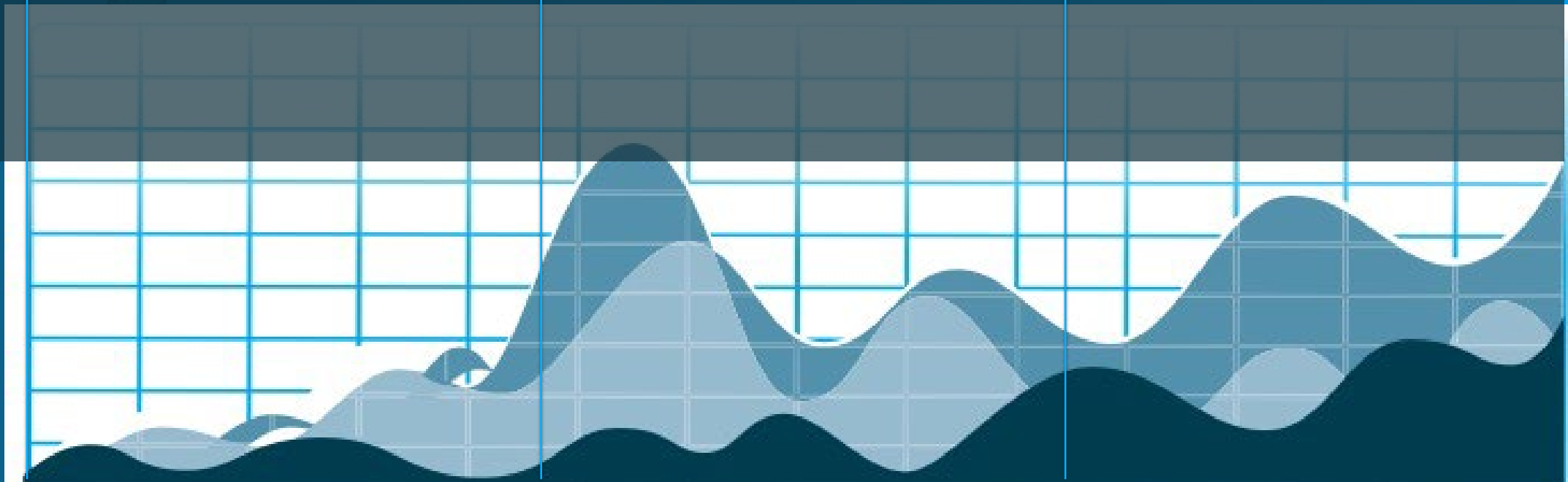
After 45-75 days, MARS data will become publicly available, including:

— IMEO-gathered satellite data and related metadata (e.g., visual data)

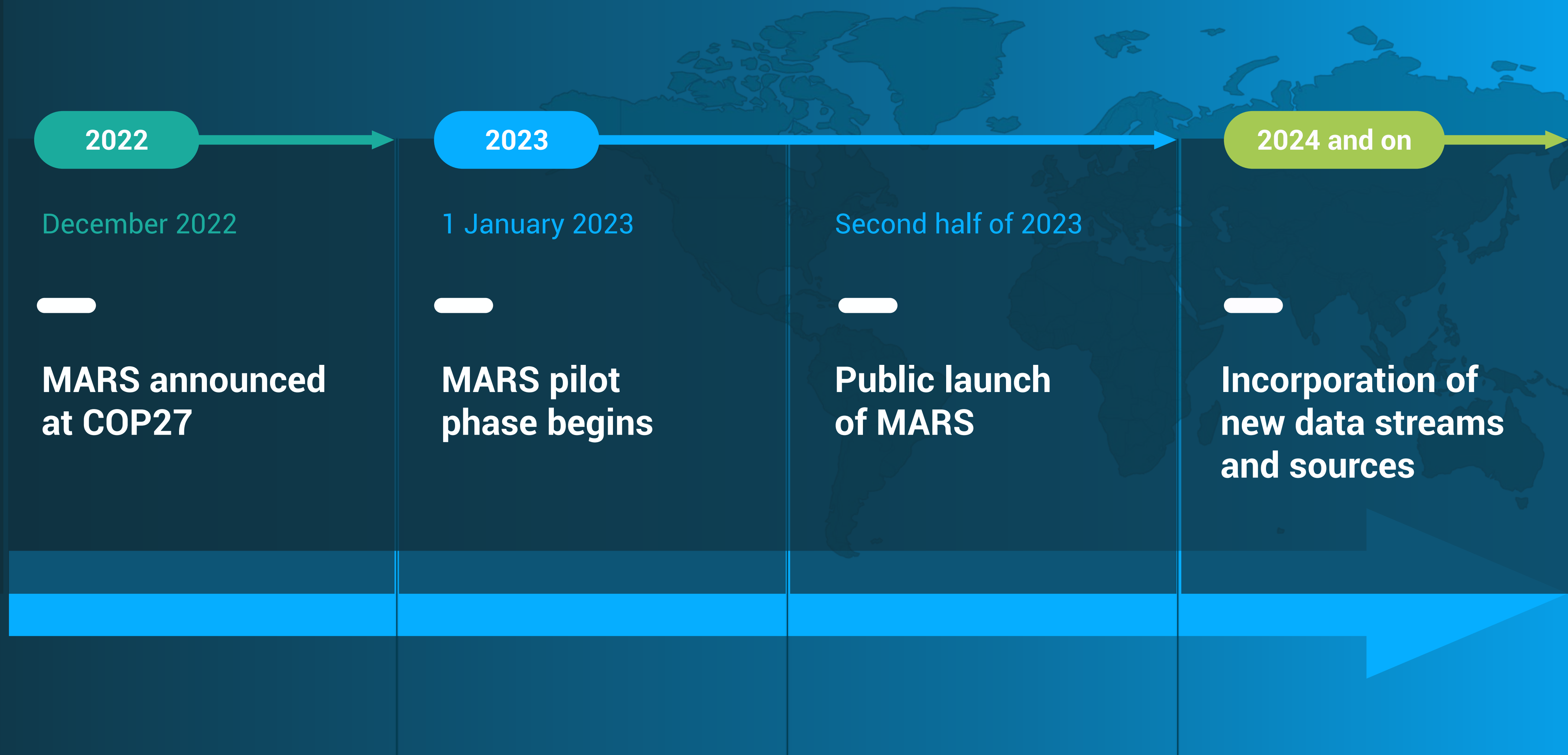
— Summary of company and/or country response(s) to notification process

— Summary description of mitigation efforts and/or plans

— Any future MARS detections linked to the event location



→ **MARS data will become public later this year**





Thank you !

Manfredi
Caltagirone



Head, IMEO

manfredi.caltagirone@un.org

